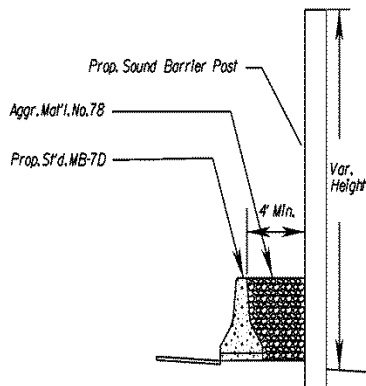


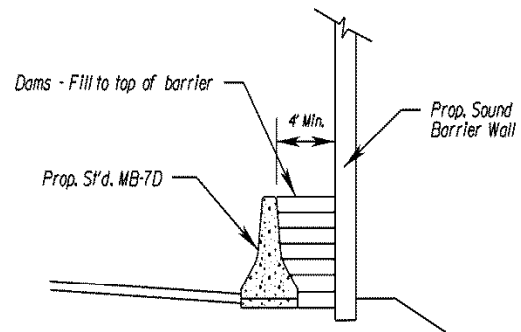
SOUND BARRIER WALL



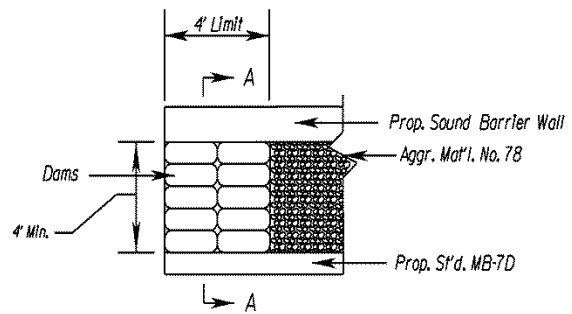
MB-7D Concrete Barrier Placement in front of Sound Barrier Wall.

SPECIAL DESIGN GRAVEL DAM

A concrete gravel dam shall be placed at the beginning and the end of the median barrier so that the No. 78 aggregate material is contained. The cost of the gravel dam shall be included in the cost of other items.



SECTION A-A



PLAN VIEW

*