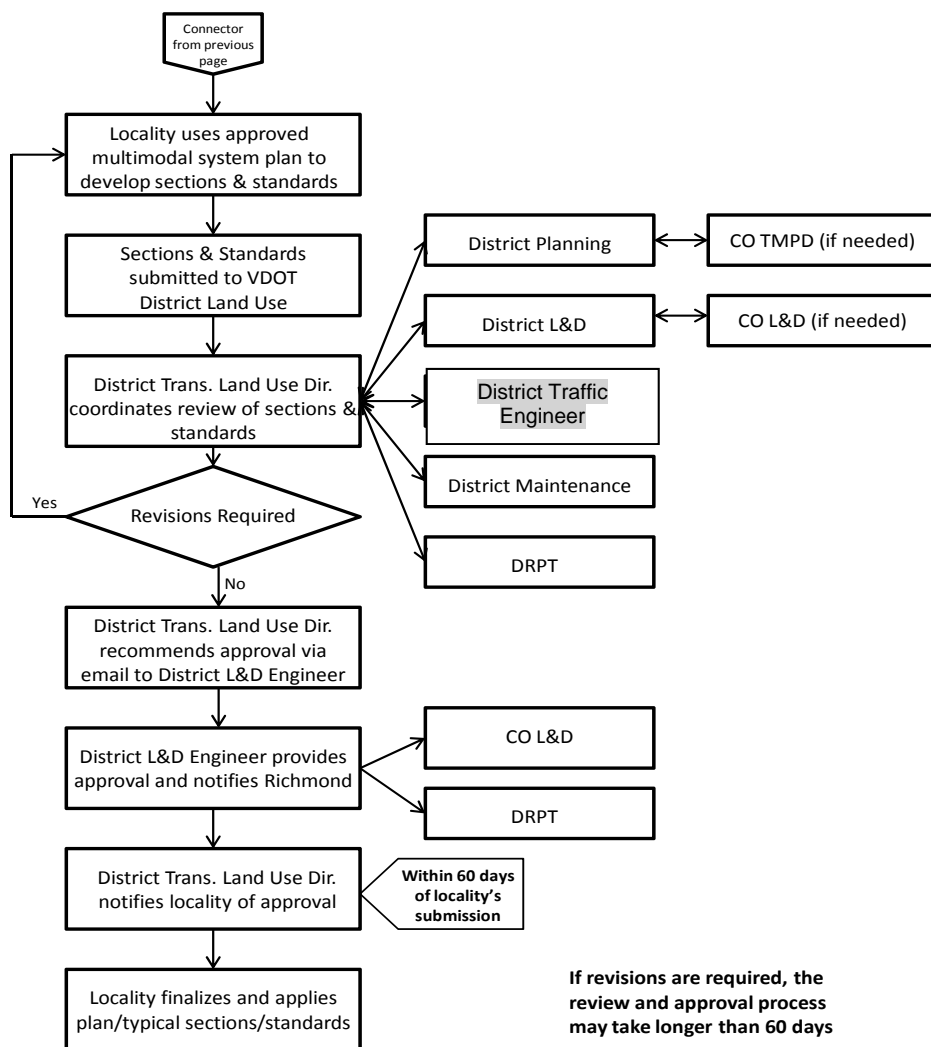


Phase 2 involves the review and approval of the roadway typical sections using the multimodal design standards based on the center type, roadway typology and modal emphasis identified in the Multimodal System Plan. Ten (10) hard copies of the roadway typical sections shall be submitted to the VDOT District Land Use Director.

For the Phase 2 review and approval process, see Flow Chart below:*

**Process for Adoption of Multimodal Design Approach to Development
Areas within a Locality
(Typical Sections and Design Standards)**



* Rev. 1/17