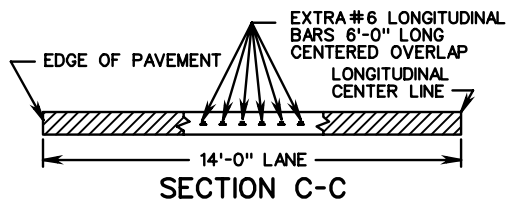
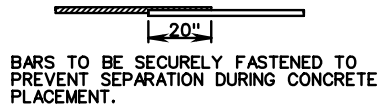


PLAN VIEW  
CONTINUOUSLY REINFORCED CONCRETE PAVEMENT

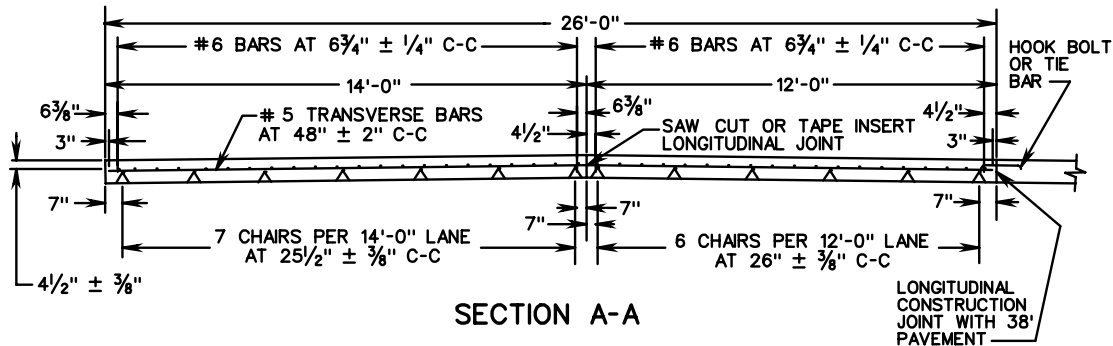
END LAPS OF BARS TO BE STAGGERED ON ANGLE OF 45° DESIRABLE, 30° MIN.



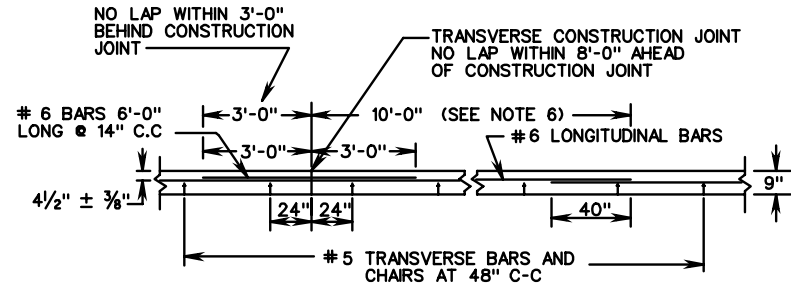
SECTION C-C



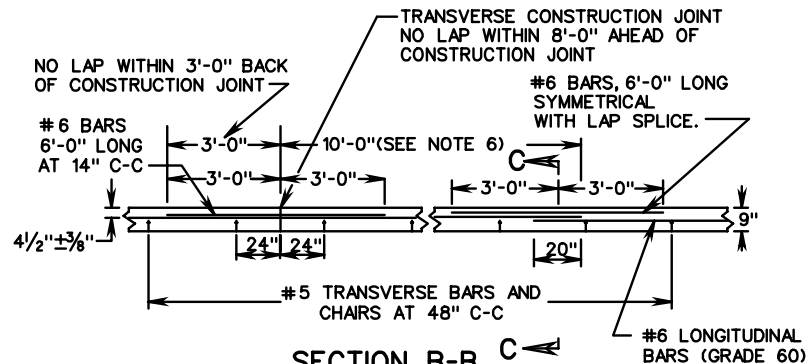
TYPICAL LONGITUDINAL LAP



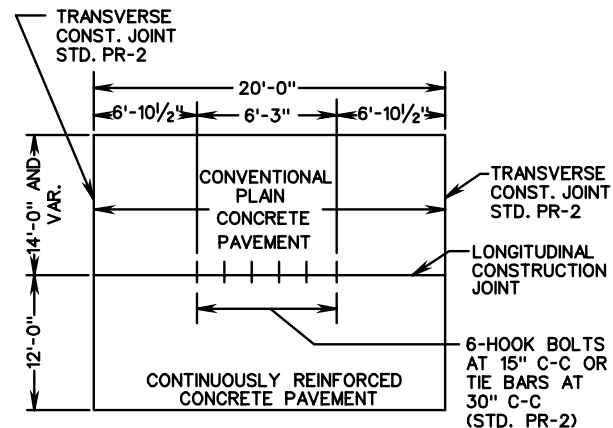
SECTION A-A



SECTION B-B  
DOUBLE LAP METHOD



SECTION B-B  
EXTRA BAR METHOD



PLAN-RAMP & MAIN LINE CONNECTION

SEE SHEET 3 OF 3 FOR NOTES.

SHEET 1 OF 3

SPECIFICATION REFERENCE
316

# 9" THICK CONTINUOUSLY REINFORCED CONCRETE PAVEMENT 14 FOOT TRAVEL LANE

VIRGINIA DEPARTMENT OF TRANSPORTATION