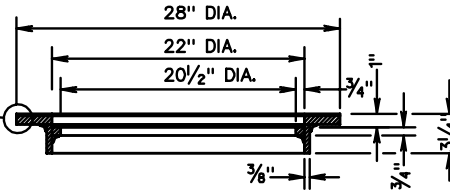
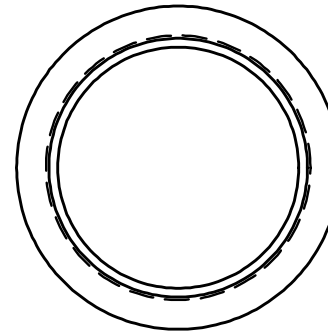
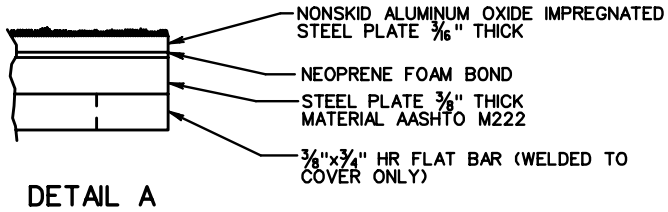


INLET COVER

SEE
DETAIL A



SECTION C-C
INLET FRAME



DETAIL A

NOTES:
STRUCTURAL COMPONENTS SHALL CONFORM
TO AASHTO M222.

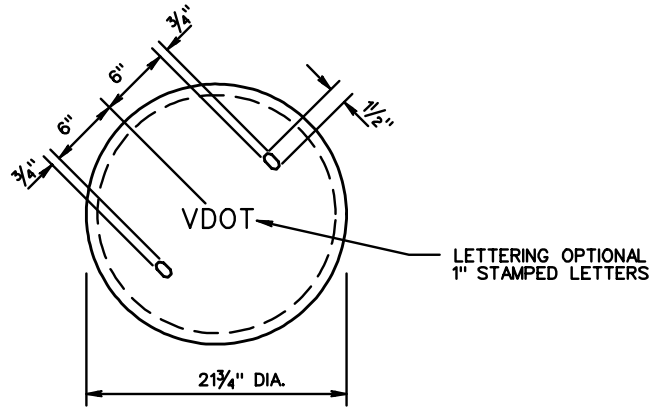
FRAME AND COVER SHALL HAVE A CONTINUOUS
FLASH FIT.

STANDARD INLET AND FRAME COVER

VIRGINIA DEPARTMENT OF TRANSPORTATION

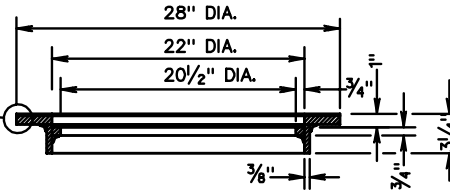
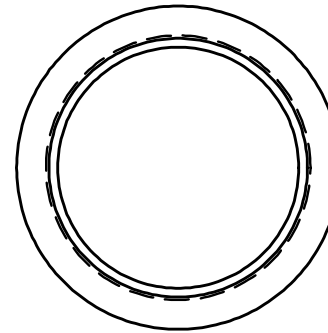
SPECIFICATION
REFERENCE

302

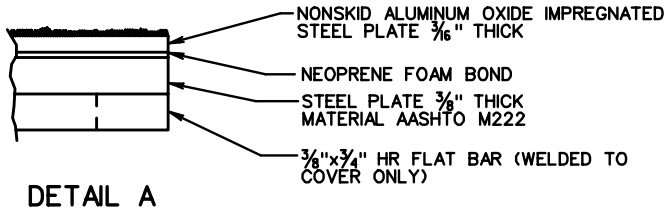


INLET COVER

SEE
DETAIL A



SECTION C-C
INLET FRAME



DETAIL A

NOTES:
STRUCTURAL COMPONENTS SHALL CONFORM
TO AASHTO M222.

FRAME AND COVER SHALL HAVE A CONTINUOUS
FLASH FIT.

STANDARD INLET AND FRAME COVER

VIRGINIA DEPARTMENT OF TRANSPORTATION

SPECIFICATION
REFERENCE

302