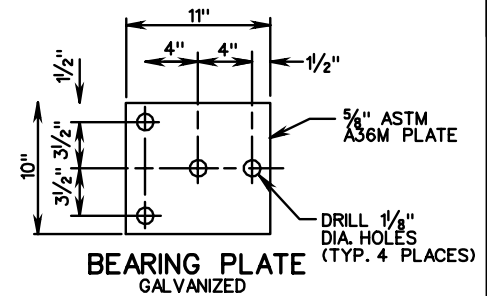


NOTE:
CAN BE FIELD CUT AND BENT USING HEAT.
IF SHOP CUT AND BENT, RIGHT HAND OR LEFT HAND MUST BE SPECIFIED DEPENDING ON WHICH SIDE OF THE ROADWAY THE TRANSITION IS USED.

ITEM 7 DETAIL



☆ CAN BE FIELD CUT AND BENT USING HEAT.

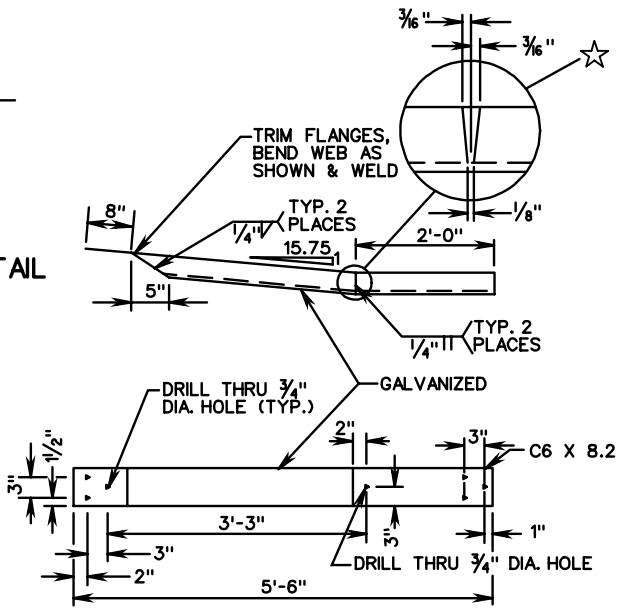
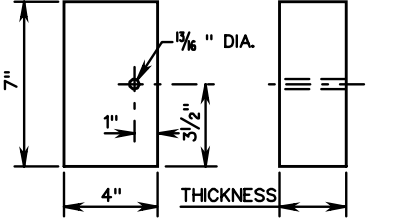
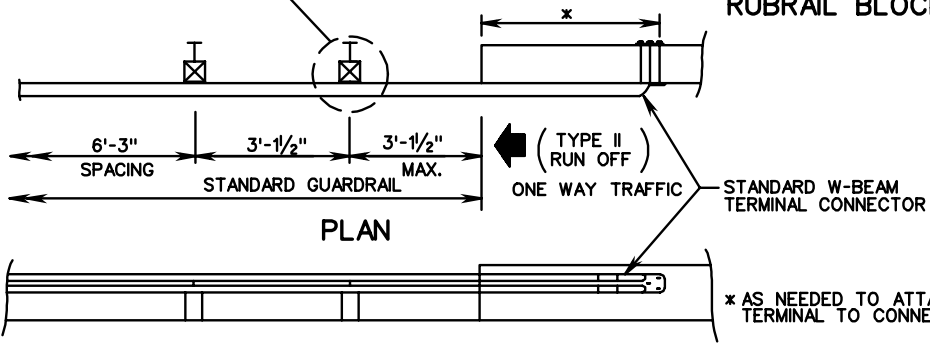
WOOD POSTS RUBRAIL BLOCKOUTS 7" X 4" X THICKNESS

POST	THICKNESS
1	6 5/8"
2	5 1/16"
3	3 3/16"
4	2"

STEEL POSTS RUBRAIL BLOCKOUTS 7" X 4" X THICKNESS

POST	THICKNESS
1	5"
2	3 3/8"
3	2 5/8"
4	1 7/8"

INDICATES EXTRA POST REQ'D. FOR RUN-OFF FIXED OBJECT ATTACHMENT ST'D. GR-FOA-1 TYPE II



ITEM 8 DETAIL

W BEAM GUARDRAIL - FIXED OBJECT ATTACHMENT RUBRAIL AND HARDWARE DETAILS

SPECIFICATION REFERENCE

505