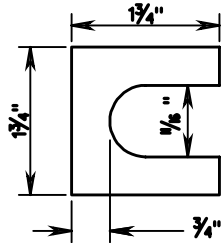
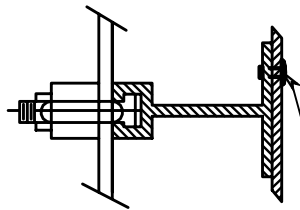


SHIM DETAIL



Furnish 2 @ 0.63" thick and 2 @ .032" thick shims per post. Shims shall be fabricated from brass conforming to ASTM B36M or from stainless steel with a minimum chromium content of 11.50% . No more than 2 shims shall be used per bolt with a maximum of 4 shims per post.

FASTENING

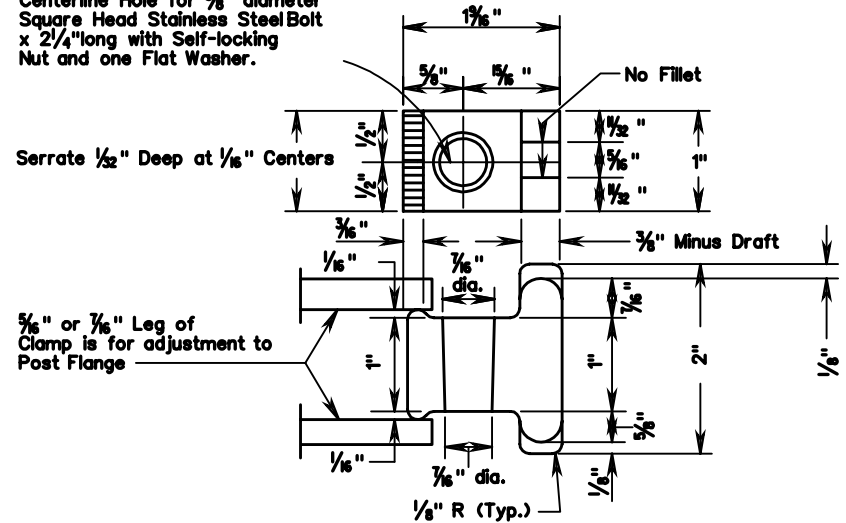


3/16" diameter rivet. -Rivets shall be dome head, break mandrel, blind rivets conforming to Industrial Fasteners Institute Standard IFI-114, Style 1, Grades 10 or 11 except that the minimum ultimate tensile strength shall be 360 pounds. Rivets shall have a grip range accommodating the combined thickness of the sign panel and zee bar and shall be installed in accordance with the manufacturer's recommendations.

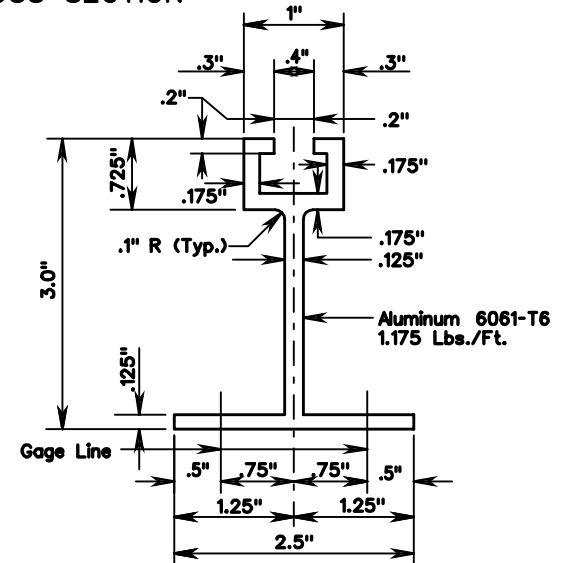
POST CLAMP DETAIL

Galvanized Gray - Iron or Aluminum Casting

Centerline Hole for 3/8" diameter Square Head Stainless Steel Bolt x 2 1/4" long with Self-locking Nut and one Flat Washer.



TEE CROSS SECTION



TYPICAL DETAILS FOR TYPE VA SIGN STRUCTURES