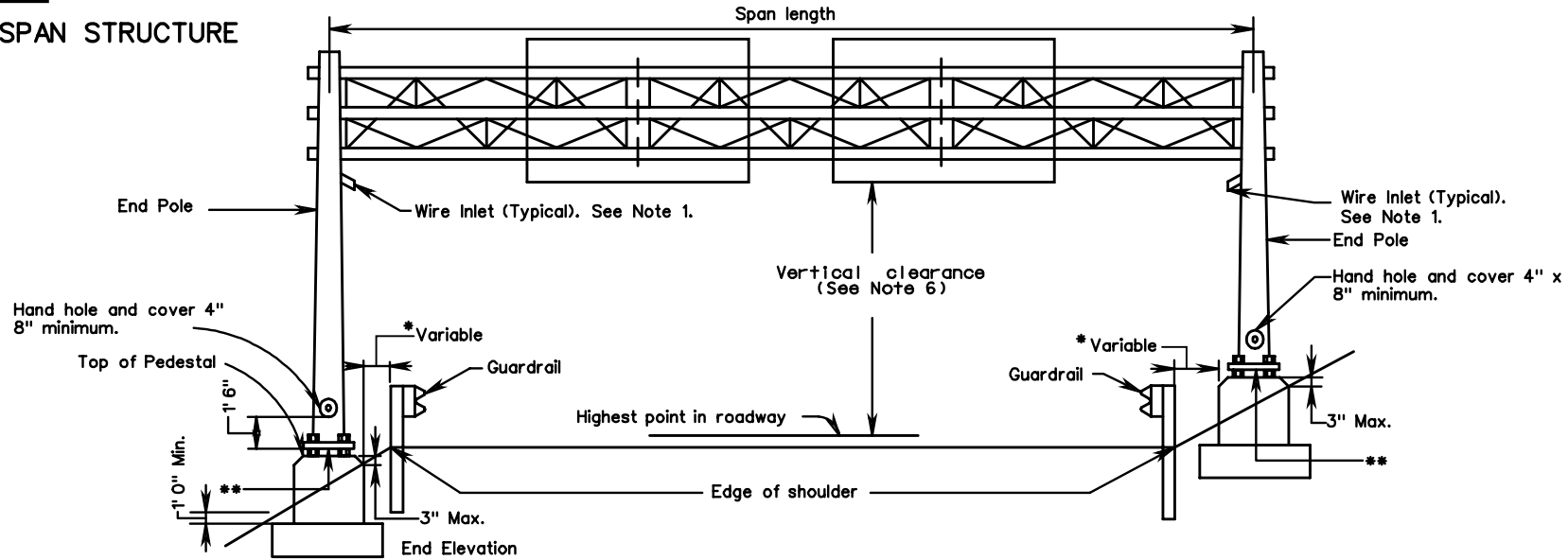
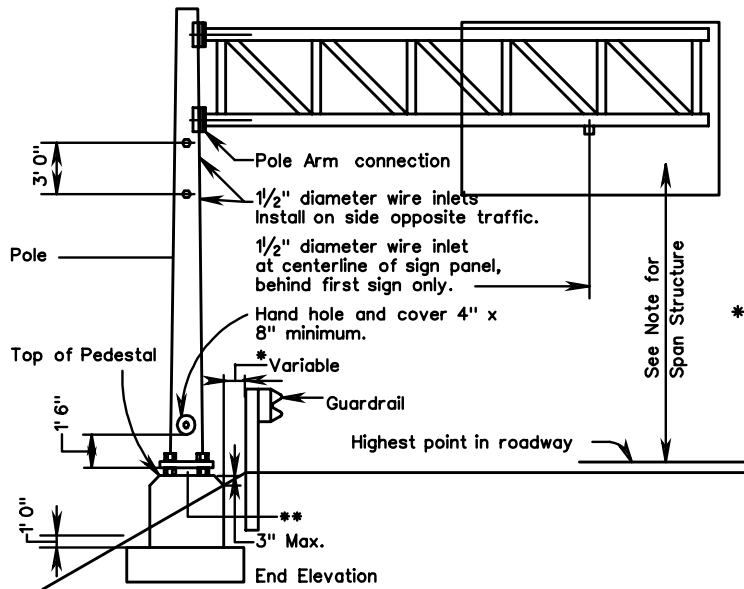


SPAN STRUCTURE



CANTILEVER STRUCTURE



NOTES:

1. 1/2" diameter wire inlets shall be provided at the following locations:
 - A. On span structures on the front leg of end pole 12" below bottom chord.
 - B. On cantilever structures on pole 12" below bottom chord.
 - C. On span structures below bottom chord at centerline behind first sign panel from each end pole.
 - D. On cantilever structures below bottom chord at centerline behind first sign panel from pole.
2. All unused wire inlets shall be capped water tight.
- *3. Distance shall be no less than the minimum indicated in Standard GR-INS.
4. No mortar, grout, or concrete shall be placed between bottom of base plate and top of pedestal.
- **5. Distance between bottom of base plate and top of pedestal shall be less than or equal to twice the diameter of anchor bolt but shall not be greater than 3".
6. Vertical clearance for overhead and bridge mounted sign structures shall be no less than 19 feet 0 inch and no more than 21 feet 0 inch from the bottom of the lowest mounted sign panel to the crown of the roadway, unless otherwise specified on the plans. Luminaire assemblies shall a vertical clearance of no less than 17 feet six inches from the bottom of the assembly to the crown of the roadway.

TYPICAL DETAILS FOR OVERHEAD SIGN STRUCTURES

VIRGINIA DEPARTMENT OF TRANSPORTATION