

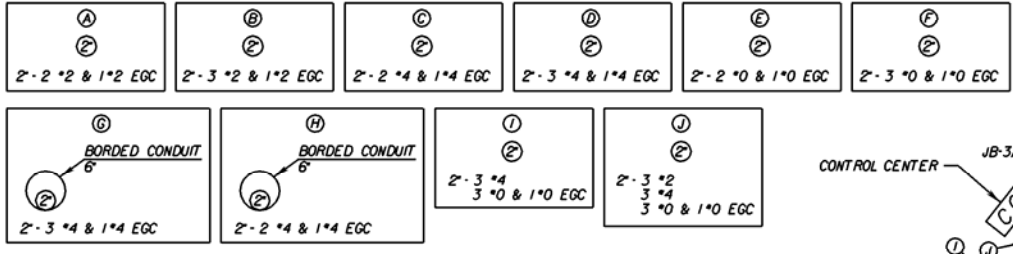
SURVEYED BY _____
 SUPERVISED BY _____
 DESIGNED BY _____

SECTION VI - REST AREAS, PARK & RIDE, AND COMMUTER LOTS.

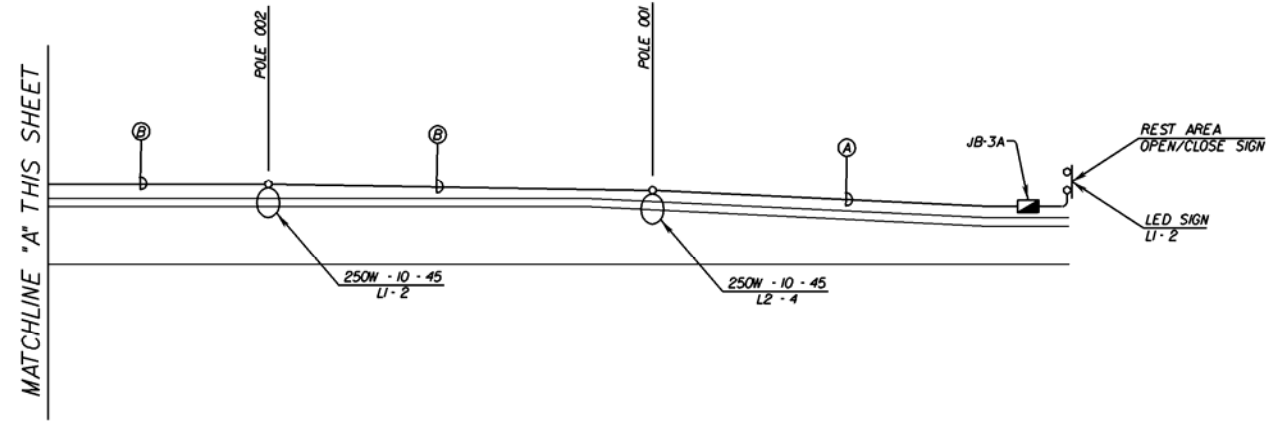
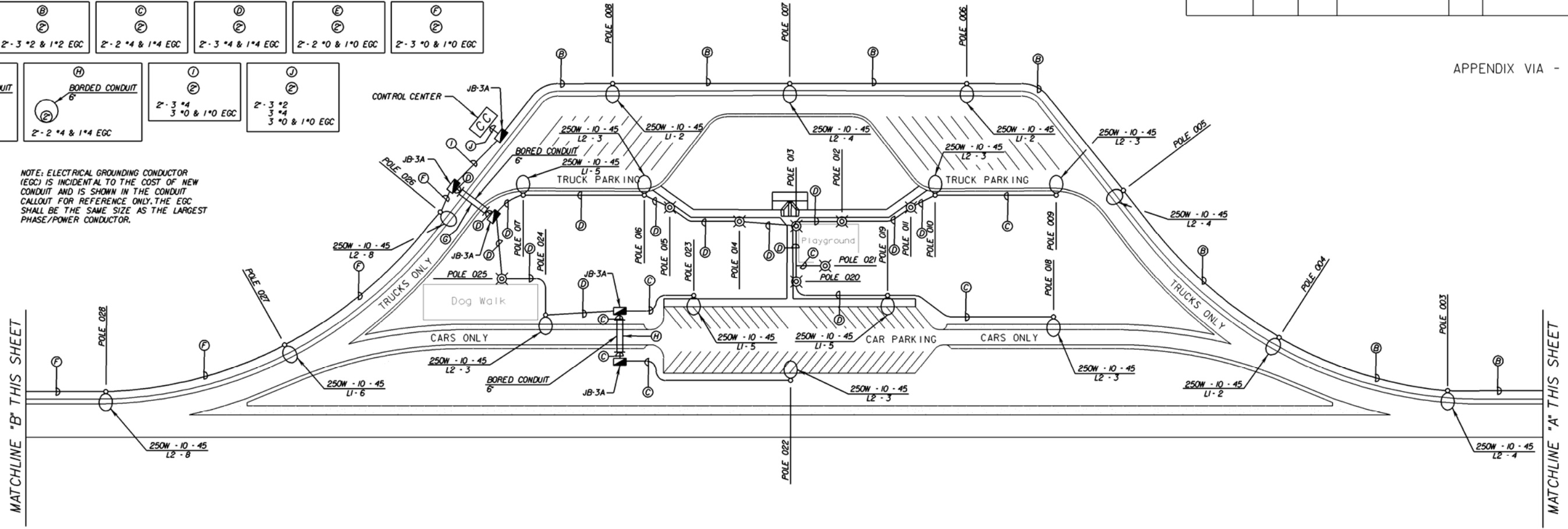
DESIGN FEATURES RELATING TO CONSTRUCTION OR TO REGULATION AND CONTROL OF TRAFFIC MAY BE SUBJECT TO CHANGE AS DEEMED NECESSARY BY THE DEPARTMENT

| REVISED | FHWA REGION | STATE | FEDERAL AID PROJECT | | STATE PROJECT | | SHEET NO. |
|---------|-------------|-------|---------------------|---------|---------------|---------|-----------|
| | | | ROUTE | PROJECT | ROUTE | PROJECT | |
| | | | | | | | |

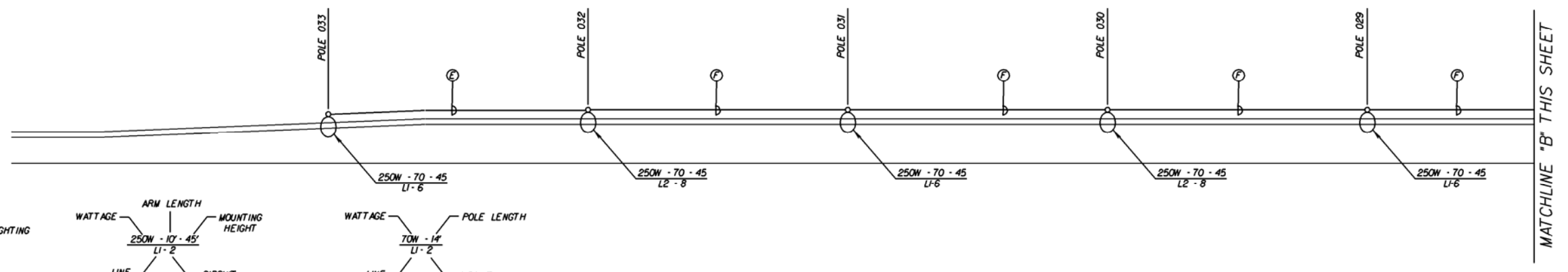
APPENDIX VIA - 5



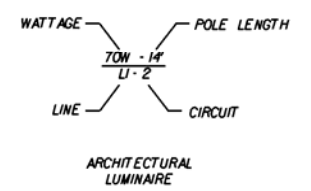
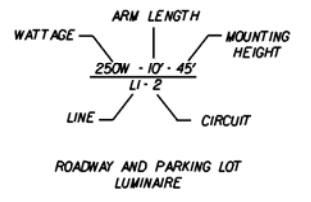
NOTE: ELECTRICAL GROUNDING CONDUCTOR (EGC) IS INCIDENTAL TO THE COST OF NEW CONDUIT AND IS SHOWN IN THE CONDUIT CALLOUT FOR REFERENCE ONLY. THE EGC SHALL BE THE SAME SIZE AS THE LARGEST PHASE/POWER CONDUCTOR.



- POLE 011 - 70W - 14 U - 5
- POLE 012 - 70W - 14 L2 - 3
- POLE 013 - 70W - 14 U - 5
- POLE 014 - 70W - 14 L2 - 3
- POLE 015 - 70W - 14 U - 5
- POLE 020 - 70W - 14 L2 - 3
- POLE 021 - 70W - 14 U - 5
- POLE 025 - 70W - 14 U - 5



LEGEND
 ○ ROADWAY AND PARKING LOT LIGHTING
 ⊗ ARCHITECTURAL LIGHTING



| PLAN NO. | PROJECT | FILE NO. | SHEET NO. |
|----------|---------|----------|-----------|
| A | | | |