

ELEVATION

SECTION A-A

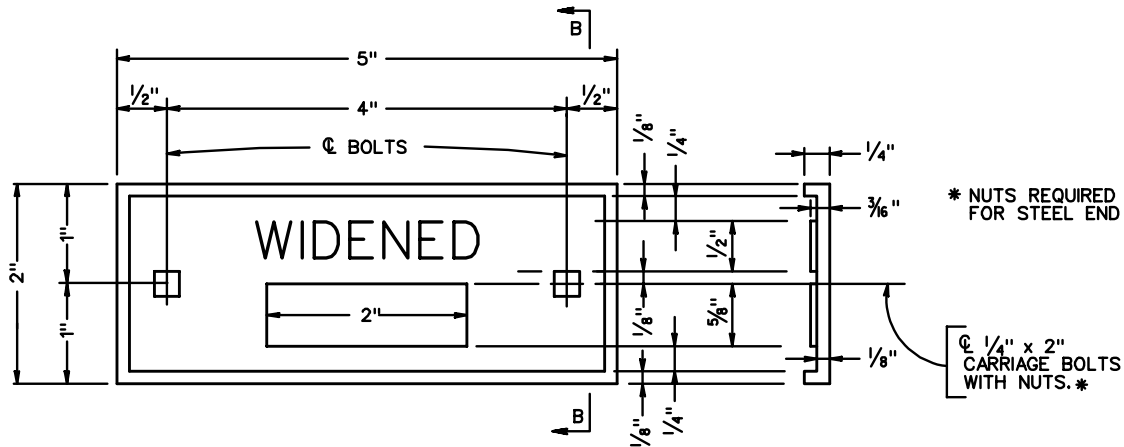
PLATE A
SCALE: 1/2" = 1'-0"

NOTES

- DATE PLATE A & B SHALL BE BRONZE.
- ALL RAISED SURFACES SHALL HAVE A BRIGHT FINISH.
- DATE BUILT AND STRUCTURE NUMBER TO BE STAMPED ON PLATED WITH A 1/2" STEEL NUMBERING STAMP BY STATE PERSONNEL.
- CARRIAGE BOLTS AND NUTS MAY BE BRONZE OR STAINLESS STEEL.

* NUTS REQUIRED ONLY FOR STEEL END POST.

1/4" x 2" CARRIAGE BOLTS WITH NUTS.*



ELEVATION

SECTION B-B

PLATE B
SCALE: 1/2" = 1'-0"



ROAD AND BRIDGE STANDARDS

BRIDGE CONSTRUCTION AND WIDENING DATE PLATES
(DATE PLATE DETAILS)

SPECIFICATION REFERENCE

SHEET 2 OF 2

REVISION DATE

VIRGINIA DEPARTMENT OF TRANSPORTATION

1101.02