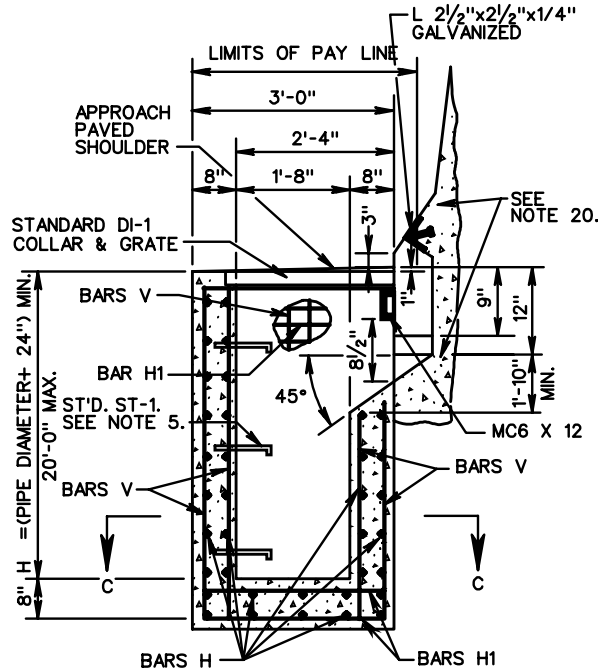


TYPE I & III INLET

| REINFORCING STEEL | | | | |
|--------------------|------|------------------|-------------------------|----------|
| MARK | SIZE | NO. | LENGTH | SPACE |
| A SEE NOTE 9 | #4 | 6 SEE NOTE 7 | L - 2'-6" SEE NOTE 8 | AS SHOWN |
| A-1 SEE NOTE 11 | #4 | (2xL)+2 | 4'-0" | 12 |
| B SEE NOTE 9 | #3 | 2x(L-4) | 1'-1" | 12 |
| B-1 SEE NOTE 11 | #4 | 9 | L + (2'-4") | 8 |
| DOWELS | #4 | SEE NOTE 6 | 1'-0" | 6 |
| F SEE NOTE 9 | #5 | 3 SEE NOTE 10 | 1'-6" | 6 |
| H | #5 | (4xH) + 10 | 3'-2" | 12 |
| H1 | #5 | (4xH) + 8 | 2'-8" | 10 |

TYPE - II INLET

| REINFORCING STEEL | | | | |
|-------------------|------|-----------------------------|---------------------------|----------|
| MARK | SIZE | NO. | LENGTH | SPA. |
| A-1 | #4 | (2xL) 2 | 4'-0" | 12" |
| B-1 | #4 | 9 | L+(2'-4") | 8" |
| H-2 | #5 | 16 SEE NOTE 12 | 7'-8" | 10" |
| V-1 | #4 | 12 | H - (1'-2") | 8" |
| V-2 | #4 | 30 | LENGTH = H | 8" |
| A SEE NOTE 15 | #4 | 12 SEE NOTE 14 | L - (2'-6") SEE NOTE 8 | AS SHOWN |
| B SEE NOTE 15 | #3 | 4(L-4) | 1'-1" | 12" |
| DOWELS | #4 | DOUBLE NO. SHOWN FOR TYPE I | 1'-0" | 6" |
| F SEE NOTE 15 | #5 | 6 SEE NOTE 13 | 1-6" | 6" |
| H | #5 | (4 + H) + 8 | 3'-2" | 12" |
| H-1 | #5 | (4 + H) + 16 | 2'-8" | 10" |
| V | #4 | 30 | LENGTH = H | 8" |
| M-1 | #5 | 5 | 3'-2" | 5" |
| M | #4 | 4 | 1'-8" | 12" |



FOR USE ADJACENT TO WALL OR BARRIER WITH SAFETY SHAPE (TYPE III)

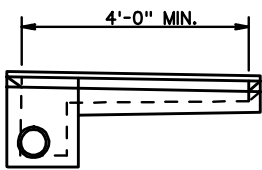
- TYPE I DENOTES INLET WITH SINGLE THROAT AND CHAMBER
TYPE II DENOTES INLET WITH DOUBLE THROAT AND CHAMBER.
TYPE III DENOTES INLET WITH SINGLE THROAT AND CHAMBER ADJACENT TO WALL OR BARRIER.
- MAXIMUM PIPE SIZE IS 24" DIAMETER.
- 3" DIAMETER WEEP HOLE TO BE LOCATED TO DRAIN SUBBASE MATERIAL. WEEP HOLE WITH 12" X 12" PLASTIC HARDWARE CLOTH 1/4" MESH OR GALV. STEEL WIRE, MIN. WIRE DIAMETER 0.03", #4 MESH HARDWARE CLOTH ANCHORED FIRMLY TO OUTSIDE OF THE STRUCTURE.
- PROVIDE SAFETY SLABS WHEN SPECIFIED ON THE PLANS.
- WHEN SPECIFIED ON THE PLANS, THE INVERT IS TO BE SHAPED IN ACCORDANCE WITH THE STANDARD IS-1. THE COST OF FURNISHING AND PLACING ALL MATERIALS INCIDENTAL TO THE SHAPING IS TO BE INCLUDED IN THE BID PRICE FOR THE STRUCTURE.

NOTES

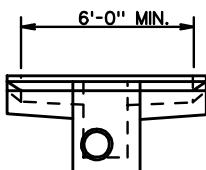
- VARIES GREATER THAN:
0' TO 18" MAX. TYPE II CHAMBER.
4" TO 3' MAX. TYPE I CHAMBER.
- FOR DETAILS AND DIMENSIONS NOT SHOWN FOR MEDIAN BARRIER, SEE STANDARD MB-8A.
- GALVANIZED MC-6 X 12 IS TO BE WELDED UNDER THE COLLAR AND EXTENDED INTO SIDEWALLS TO WITHIN 2" OF OUTSIDE FACE.
- ALL REINFORCING BARS ARE TO BE GRADE 60 STEEL WITH MIN. OF 1/2" CONCRETE COVER. ANY BAR IN CONFLICT WITH PIPE SHELL AND/OR TOP SLAB OPENING ARE TO BE FIELD CUT TO PROVIDE THE REQUIRED COVER.
- DO NOT LOCATE STANDARD ST-1 STEPS ON CHAMBER WALLS THAT HAVE PIPES WHEN POSSIBLE.
- 8 DOWELS REQUIRED FOR DI-10L, MIN. L = 7'-0". ADD 2 DOWELS FOR EACH ADDITIONAL FOOT.
4 DOWELS REQUIRED FOR DI-10K, MIN. L = 4'-0". ADD 2 DOWELS FOR EACH ADDITIONAL FOOT.
- 12 BARS A REQUIRED FOR DI-10L.
- LENGTH OF BARS A, DI-10L = $\frac{L - (2'-6")}{2}$
- DO NOT USE WITH DI-10J.
- USE 6 BARS F FOR DI-10L TYPE I
- DO NOT USE WITH TYPE III.
- ADD 4 ADDITIONAL BARS FOR EACH EXTRA FOOT OF DEPTH.
- USE 12 BARS F FOR DI-10L TYPE II.
- 24 BARS A ARE REQUIRED FOR DI-10L.
- DO NOT USE WITH DI-10J.
- A MINIMUM 22" FOOTING DEPTH IS REQUIRED FOR FORMING THE INLET SLOT. SEE PLANS FOR LENGTH "L".
- REFER TO PLANS FOR STRUCTURE LOCATIONS, DATA AND DIMENSIONS.
- REFER TO PLANS FOR LOCATIONS OF PIPES AND INVERTS.
- FOR TYPE III, COST OF ACCOMMODATION OF INLET THROAT IS TO BE INCLUDED IN COST OF WALL BARRIER.
- FOR TYPE III, SEE WALL PLANS FOR WALL FOOTING DETAILS.



DI-10J



DI-10K



DI-10L



ROAD AND BRIDGE STANDARDS

CONCRETE BARRIER DROP INLET (WITH MB-8A)

SPECIFICATION REFERENCE

12" - 24" PIPE: DEPTH (H) = 20' MAX.

VIRGINIA DEPARTMENT OF TRANSPORTATION

SHEET 2 OF 2

REVISION DATE

233
302

104.29