

**GUIDELINES — FOR PROJECTS THAT ALLOW EXISTING PAVEMENT TO BE OPEN CUT. WHEN THIS PROVISION APPLIES INCLUDE THE FOLLOWING IN THE PROPOSAL: SS21113 SuperPave -Asphalt Concrete and SS31510 SuperPave -Asphalt Conc Place or SS21402 Hydraulic Cement, SS21501 Hydraul Cement Conc Admixtures, SS21706 Hydraulic Cement Concrete, or S312CM1 Blotted Seal Coats or S314CM3 Asphalt Surface Treatment.**

**S302B00-1212**

**VIRGINIA DEPARTMENT OF TRANSPORTATION  
SPECIAL PROVISION FOR  
RESTORING EXISTING PAVEMENT**

January 14, 2008cc

**I. DESCRIPTION**

This work shall consist of restoring existing pavement, removed for installation or repair of utilities such as, but not limited to pipe culverts, conduits, water and sanitary sewer items.

**II. MATERIALS**

Asphalt Concrete shall conform to the requirements of Section 211 of the Specifications.

Aggregate Subbase material shall conform to the requirements of Section 208 of the Specifications.

Asphalt Material shall conform to the requirements of Section 210 of the Specifications.

Fine Aggregate shall conform to the requirements of Section 202 of the Specifications.

Coarse Aggregate for surface treatment shall conform to the requirements of Section 203 of the Specifications.

Hydraulic Cement Concrete Class A3 shall conform to the requirements of Section 217 of the Specifications.

Steel Reinforcement shall conform to the requirements of Section 223 of the Specifications.

**III. PROCEDURES**

Pavement restoration shall be in accordance with this Provision and plan notes.

Backfill shall be in accordance with Section 302.03(a)2.g. of the Specifications.

Asphalt Concrete shall be placed and compacted in accordance with Section 315 of the Specifications.

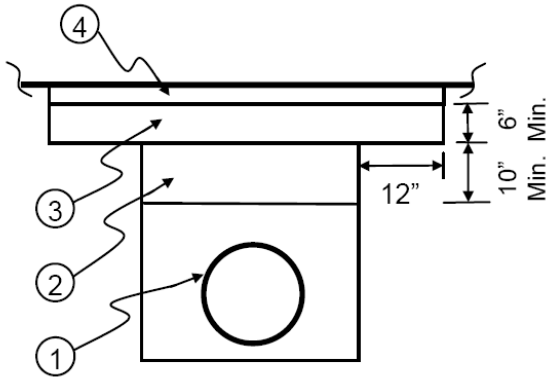
Surface Treatment shall be placed in accordance with the Asphalt Surface Treatment special provision and the attached drawing.

Concrete Pavement shall be placed in accordance with Section 509 of the Specifications and this special provision. Open trench in Hydraulic Cement Concrete Pavement should be located at existing transverse joints if at all possible. If concrete pavement is removed within two feet of an existing transverse joint, pavement removal shall be extended two feet beyond the joint. Reinforcing steel and dowels shall be installed in accordance with Road and Bridge Standard PR-2. Joint replacement shall be in accordance with Road and Bridge Standard PR-2.

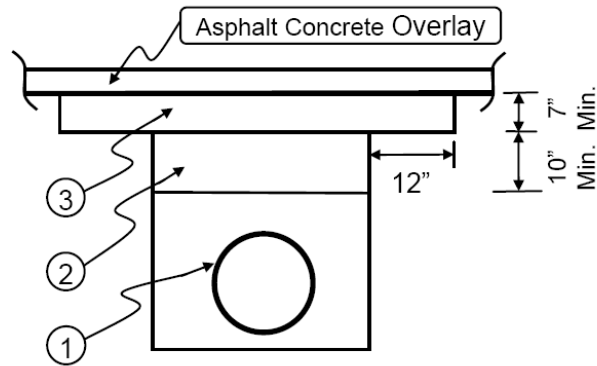
\*These SPECIFICATIONS REVISIONS are subject to change on short notice.

**IV. MEASUREMENT AND PAYMENT**

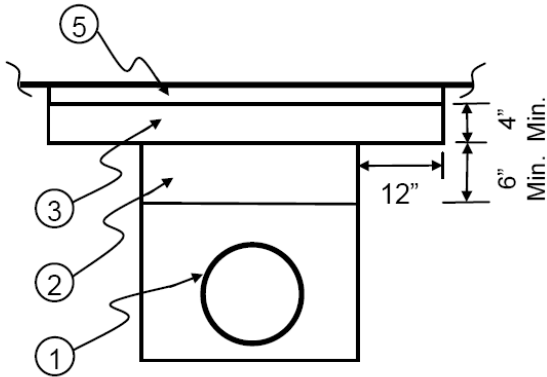
Restoring Existing Pavement unless otherwise specified will not be measured for separate payment, the cost thereof shall be included in the price bid for the utility to which it pertains in accordance with Section 302.04, Section 520.06 or Section 700.05 of the Specifications, as appropriate. However, widths and depths in excess of the attached drawing that are authorized or directed by the Engineer will be paid for in accordance with Section 109.05 of the Specifications.



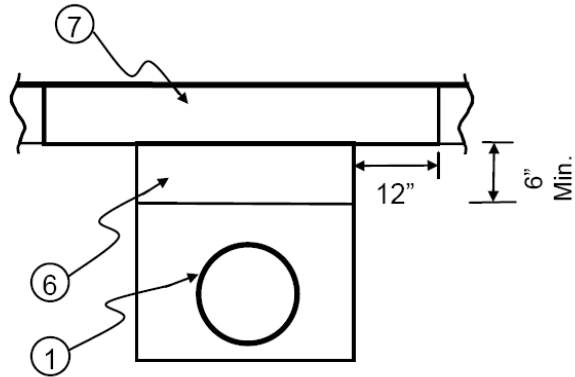
PAVEMENT STRUCTURE  
Asphalt Conc. Base and Surface



PAVEMENT STRUCTURE  
Scheduled for Asphalt Conc. Overlay



PAVEMENT STRUCTURE  
Aggregate Base and Surface Treatment



PAVEMENT STRUCTURE  
Hydraulic Cement Concrete

\*These SPECIFICATIONS REVISIONS are subject to change on short notice.

## NOTES:

The following methods for restoring existing pavement shall be adhered to unless otherwise specified on the plans.

1. Pipe culverts, conduits and utility items shall be installed in accordance with the applicable Road and Bridge Standards and Specifications.
2. Subbase - Aggregate material Type 1, Size 21A or 21B.
3. Asphalt Concrete Type BM-25.0
4. Surface - Asphalt Concrete Type SM-9.5D @ 165 lbs. per sq. yd.
5. Surface - Blotted Seal Coat Type C: The initial seal and final seal shall be CRS-2, CMA-2 or CMS-2h liquid asphalt material @ 0.17 gal./sq. yd. with 15 lbs. of No. 8P stone/sq. yd. each. The blot seal shall be CRS-2, CMS-2 or CMS-2h liquid asphalt material @ 0.15 gal./sq. yd. with 10 lbs. of fine aggregate grade B sand per sq. yd.
6. Subbase - Aggregate material Type 1 Size 21B
7. Surface - Hydraulic Cement Concrete, high early strength, matching existing structure for depth and surface texture.

\*These SPECIFICATIONS REVISIONS are subject to change on short notice.