

Falcon Database Information

All Files

General Information Tab

| General Information | | Directories & Keywords | Title Block | File Format Keywords | Document Notes |
|--|-----------------------------------|------------------------|-------------|----------------------|----------------|
| Description | sheet 24 Sta. 91+00 to Sta. 95+00 | | | | |
| Document # | 24 | Rev # | / | Sheet # | |
| Status | index | / | 10/22/00 | File Format | igds |
| Availability | On Server | | | | |
| Last Modified Date | 09/25/01 | Created By | bultje_w | / | 10/22/00 |
| <input type="button" value="Open"/> <input type="button" value="View"/> <input type="button" value="Checkout"/> <input type="button" value="Check In"/> <input type="button" value="Search..."/> <input type="button" value="Exit"/> | | | | | |
| Retrieved database record for <d1662224.dgn>... | | | | | |

In the “**Document #**” field, place the sheet number. If the sheet number is 1 thru 9 place a zero in front of the sheet number. (For example if the sheet number is 2e the Document # should be 02e.) If the file is not a plan sheet (IGrds files, CAiCE files, etc.), then the field should be blank. The “**Status**” field has three choices: index, active, and survey. The field must be set to “**index**” only when the file is going to be a part of the plan assembly, a reference file, IGrds and CAiCE files, or GEOPAK files relevant to the design of the project. Otherwise set the field to “**active**”. The “**survey**” setting is for locking down the survey file when it is being edited. Do not change status field if set to survey.

Directories and Keywords Tab

General Info
 Directory & Keywords
 Title Block
 File Format Keywords
 Notes

| | | | | |
|------------------|--------------|---|------------|------|
| PPMS#: 16622 | Stage | < | 07/02/2001 | Save |
| Division: d16622 | Route | < | 10/02/2002 | Prev |
| SubDirectory: | County/City | < | 07/03/2001 | Next |
| SubDirectory: | Section | < | 07/02/2001 | |
| SubDirectory: | SB Plan # | < | | |
| SubDirectory: | C# or M# etc | < | 10/02/2002 | |

Unload Document Manager
 Reference File Check

Status: Retrieved record for d1662224.dgn

The “**Stage**” field is required to be used only when you are ready to archive a set of files, otherwise it should be left blank. Instructions about the “**Stage**” field are shown in more detail on page 7. All files with the “**Status**” set to index must have the **Route**, **County/City**, **Section**, and **C# or M# etc** filled in. These should match the project number exactly. **The route number will always be four digits.** The Structure & Bridge # (**SB Plan #**) is used for Bridge Plans only.

Title Block Tab

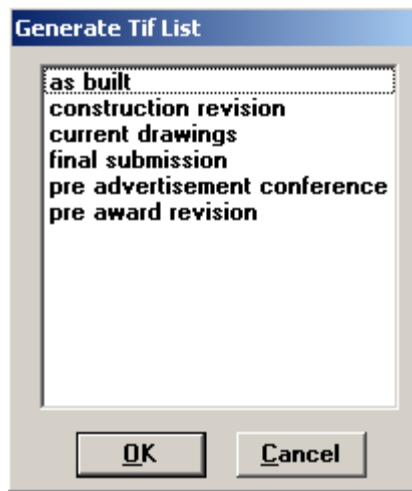
No data fields required

File Format Keywords Tab

General Information
 Directories & Keywords
 Title Block
 File Format Keywords
 Document Notes

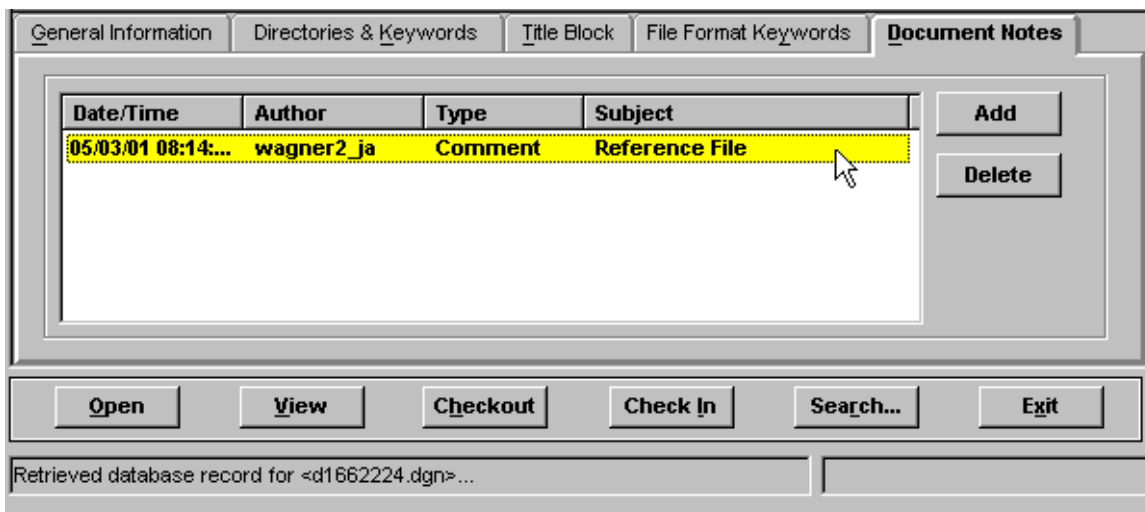
| | | |
|--------------|------------------|---|
| Engineer | Warren Bultje | |
| Designer | Vicky Cole | |
| District | nova | v |
| County | fairfax | v |
| Generate Tif | current drawings | v |

All files with the status set to “Index” must have Engineer, Designer, District, and County filled in. If the Engineer and Designer are the same person, then the “**Designer**” field is not required and may be left blank. The “**Generate Tif**” field is required when tiff files are created so they are placed in the proper location within the Falcon Web Suite. The next page shows available choices.

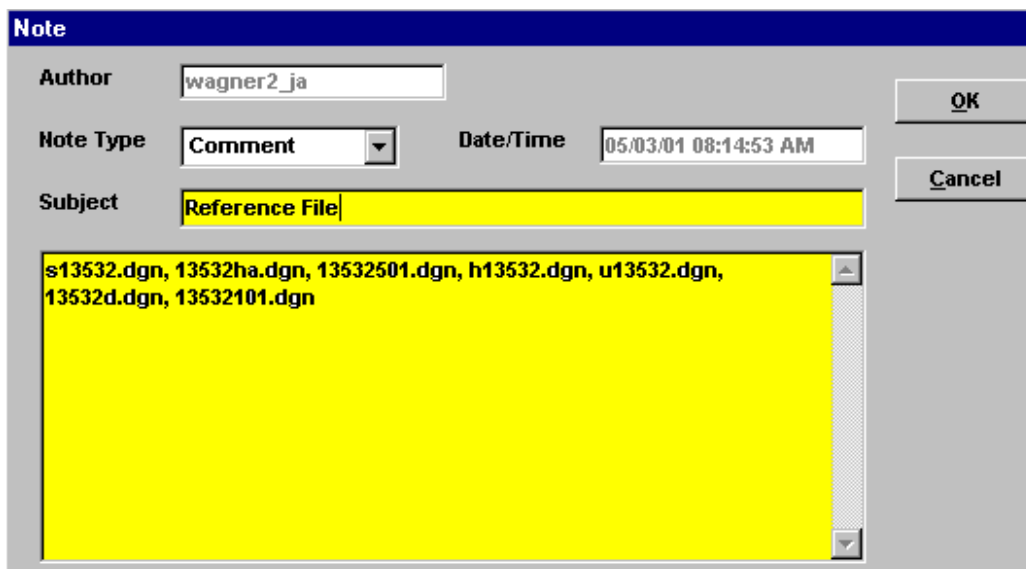


Document Notes Tab

The Document Notes tab is used to place a note that will provide information about which files are attached to the sheet file drawings.



Reference file note is **not applicable** for **Bridge Division**.



Enter the Subject line as **Reference File**. Only enter the reference files that have the display turned on when the sheet is plotted.

IGrds Files

The screenshot shows a web-based interface for managing IGrds files. The 'General Information' tab is active. The 'Description' field is highlighted in yellow and contains the text 'IGrds Workig File Jaydee Blvd.'. Below it, there are input fields for 'Document #', 'Rev #', and 'Sheet #'. The 'Status' dropdown menu is set to 'index'. To the right of the status field, there is a date field containing '04/03/01' and a 'File Format' field containing 'igds'. Below these, there is an 'Availability' dropdown set to 'On Server'. At the bottom of the form, there are fields for 'Last Modified Date' (06/06/01) and 'Created By' (bultje_w / 03/27/01). To the right of the form are three buttons: 'Save', 'Prev', and 'Next'. Below the form is a row of buttons: 'Open', 'View', 'Checkout', 'Check In', 'Search...', and 'Exit'. At the very bottom, a status bar indicates 'Retrieved database record for <13532540.hal>...'.

All IGrds files must have the “**Description**” and “**Status**” fields filled in. The “**Status**” should be set to “**index**” for all usable sets of working files. This does not include working files used for alternate scenarios or test files. IGrds reports and list files should be renamed and saved in accordance with **IIM-118**. The description should include the type of report and the roadway name. “**Status**” field should also be set to “**index**”.

CAiCE Files

The screenshot shows a web-based interface for managing CAiCE files. The 'General Information' tab is active. The 'Description' field is highlighted in yellow and contains the text 'CAICE PROJECT FILE'. Below it, there are input fields for 'Document #', 'Rev #', and 'Sheet #'. The 'Status' dropdown menu is set to 'index'. To the right of the status field, there is a date field containing '05/24/00' and a 'File Format' field containing 'igds'. Below these, there is an 'Availability' dropdown set to 'On Server'. At the bottom of the form, there are fields for 'Last Modified Date' (05/01/99) and 'Created By' (falcon / 05/01/99). To the right of the form are three buttons: 'Save', 'Prev', and 'Next'. Below the form is a row of buttons: 'Open', 'View', 'Checkout', 'Check In', 'Search...', and 'Exit'. At the very bottom, a status bar indicates 'Retrieved database record for <dt9845.g\$\$>...'.

All CAiCE files must have the “**Description**” and “**Status**” fields filled in. If you have multiple surfaces, give detailed descriptions for each surface. “**Status**” field should also be set to “**index**”.

Survey Files

| General Information | | Directories & Keywords | Title Block | File Format Keywords | Document Notes |
|--|--|------------------------|----------------------|----------------------|----------------------|
| Description | MASTER SURVEY FILE (Updated 9-05-2000) new property line added | | | | |
| Document # | <input type="text"/> | Rev # | <input type="text"/> | Sheet # | <input type="text"/> |
| Status | index | / | 10/17/01 | File Format | igds |
| Availability | On Server | | | | |
| Last Modified Date | 10/17/01 | Created By | falcon | / | 05/01/99 |
| <input type="button" value="Open"/> <input type="button" value="View"/> <input type="button" value="Checkout"/> <input type="button" value="Check In"/> <input type="button" value="Search..."/> <input type="button" value="Exit"/> | | | | | |
| Remove all of the files from the list of selected files. | | | | | |

All Survey files must have the “**Description**” and “**Status**” fields filled in. The Survey Section will enter information for Survey files. If the “**Status**” field is set to “**survey**” do not change it. If the field is set to “**active**” the designer must change it to “**index**”.

Cross Section Plot Files

| General Information | | Directories & Keywords | Title Block | File Format Keywords | Document Notes |
|--|---|------------------------|----------------------|----------------------|----------------------|
| Description | RIDGECREST AVENUE CROSS-SECTION PLOT FILE | | | | |
| Document # | <input type="text"/> | Rev # | <input type="text"/> | Sheet # | <input type="text"/> |
| Status | index | / | 05/23/00 | File Format | igds |
| Availability | On Server | | | | |
| Last Modified Date | 06/11/01 | Created By | falcon | / | 05/01/99 |
| <input type="button" value="Open"/> <input type="button" value="View"/> <input type="button" value="Checkout"/> <input type="button" value="Check In"/> <input type="button" value="Search..."/> <input type="button" value="Exit"/> | | | | | |
| Retrieved database record for <9845902plt.dgn>... | | | | | |

All Cross Section Plot files must have the “**Description**” and “**Status**” fields filled in. If you have multiple files, the descriptions should contain road name(s) or route number(s). “**Status**” field should also be set to “**index**”.

Archiving Files

The following instructions are for archiving your files. Archiving your files will give you a complete copy of your project at that particular stage of development. After all of the “**required**” database fields are filled out, you are ready to archive the project when you reach one of the appropriate concurrent engineering stages. The nine stages for archiving are **Preliminary Field Inspection, Field Inspection, Public Hearing, Right of Way Partial, Right of Way Total, Final Submission, Construction Revision, Pre Award Revision, and As Built** as shown below. In the “**Directories & Keywords**” tab, set the “**Stage**” to the appropriate concurrent engineering stage for all project files. Only change the stage when you are ready to archive the file, otherwise leave it blank.

| Directories | Keywords | Date | Action |
|------------------|------------------------------------|------------|--------|
| PPMS#: 16622 | Archive: as built | 11/12/2003 | Save |
| Division: d16622 | Route: constr. revision | 11/12/2003 | Prev |
| SubDirectory: | County/City: field inspection | 11/12/2003 | Next |
| SubDirectory: | Section: final submission | | |
| SubDirectory: | SB Plan #: pre award revision | | |
| SubDirectory: | C# or M# etc: prelim. field inspec | | |
| | | 11/12/2003 | |
| | | | |
| | | 11/12/2003 | |

Falcon will copy all of the files that have the “**Stage**” field set to an **Archives** environment on a Falcon server. This process will run nightly. When the process has finished the “**Stage**” field will automatically return to a blank status. This will allow different files to be archived at different stages. These files can be accessed for viewing and printing but cannot be changed when in the **Archives** environment.

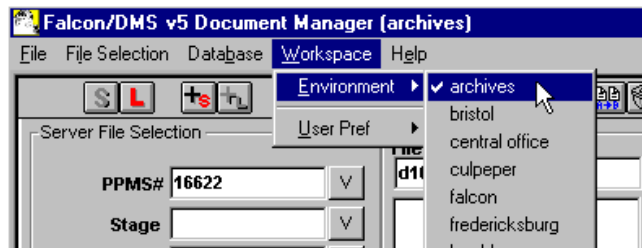
The following is an example of what types of files should be archived in the respective concurrent engineering stages:

- Preliminary Field Inspection** – IGrds/GEOPAK* and DGN files
- Public Hearing** – IGrds/GEOPAK* and DGN files
- Field Inspection Stage** – IGrds/GEOPAK* and DGN files
- Right of Way Partial** – IGrds/GEOPAK* and DGN files
- Right of Way Total** – IGrds/GEOPAK* and DGN files
- Final Submission** – IGrds, CAiCE, GEOPAK*, DGN, and all related files necessary for the contractor to build the project.
- Constr. Revision** – All revised files
- Pre Award Revision** – All revised files
- As Built** – All Files

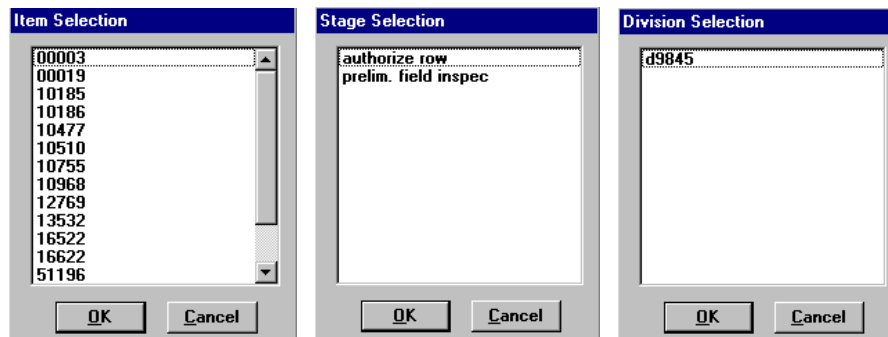
* **Note:** Please contact AES Helpdesk to Archive any GEOPAK files.

Accessing Archived Files

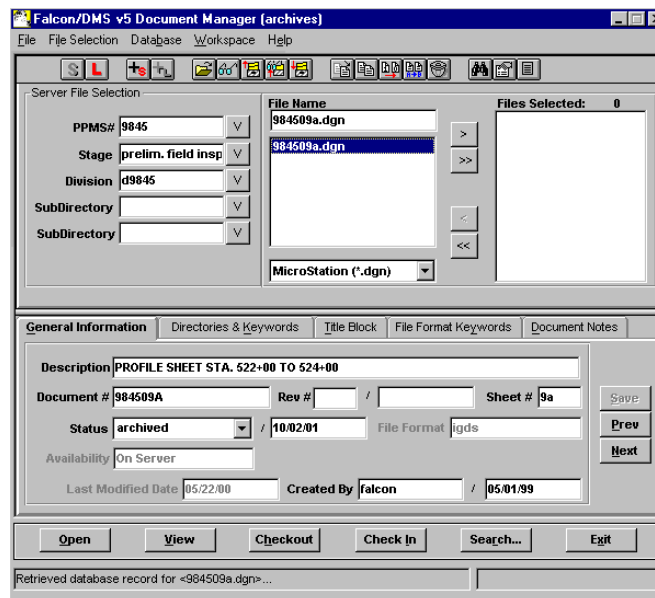
The next few screen captures show how to access the archived files.



In the Falcon Document Manager under “**Workspace**”, “**Environment**”, there will be a choice for “**archives**”.



After setting the environment to **Archives**, choose “**PPMS#**”, then “**Stage**”, then “**Division**”.



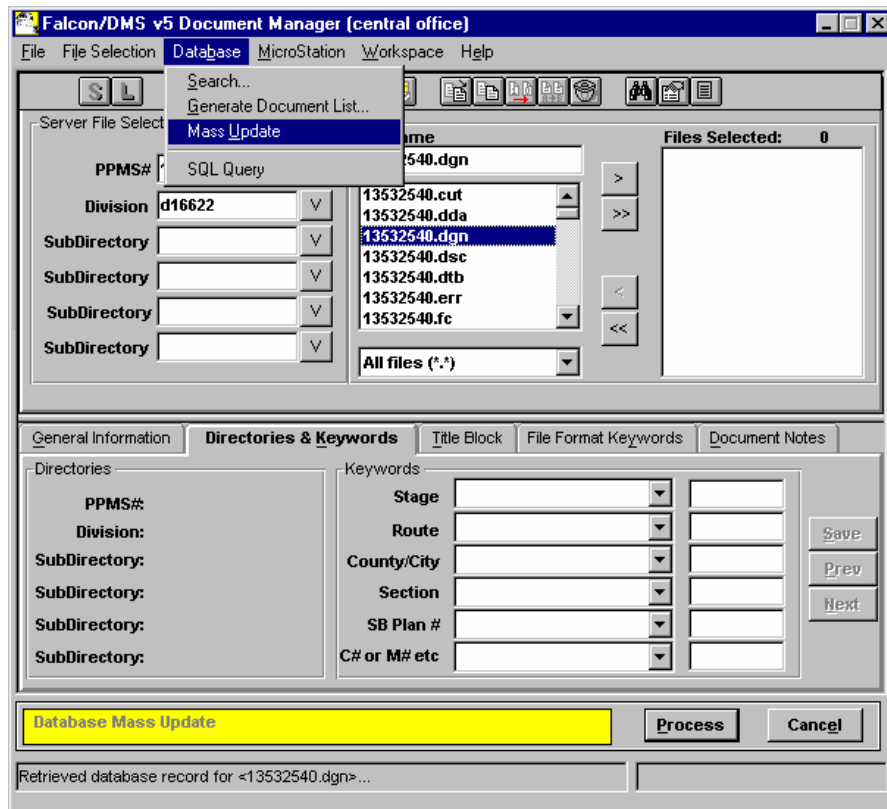
The files that have been archived for that stage will be available as shown above. These files are read only and cannot be edited. Use the **View** button to access these files for reviewing and plotting.

Example Index of Files

This is only an example. File names may or may not match the Cadd Manual.

| Filename | SheetNo | DocumentNo | Description | ReferenceFiles |
|-----------------|---------|---|---|---|
| 984509a.dgn | 9a | 984509A | PROFILE SHEET STA. 522+00 TO 524+00 | none |
| d9845009.dgn | 9 | D9845009 | plan sheet 9 sta. 522+00 to 524+00 | s9845.dgn,98451000.dgn,dr9845009.dgn,9845des.dgn,ud9845.dgn |
| 372 9845700.bri | | MOUNT HERMAN SCHOOL ROAD IGRDS WORKING FILE | | |
| 373 9845700.bx1 | | MOUNT HERMAN SCHOOL ROAD IGRDS WORKING FILE | | |
| 609 dt9845.pt4 | | CAICE PROJECT FILE | | |
| 610 dt9845.sr\$ | | CAICE PROJECT FILE | | |
| 611 s9845.bn# | | CAICE SURFACE FILE | | |
| 612 s9845.cll | | CAICE SURFACE FILE | | |

Mass Update Tool in Windows Document Manager



The **Mass Update** tool can be used to change database information on multiple files. Place the files in the Files Selected window and go to **Database --> Mass Update**. A **yellow** bar will appear at the bottom of the Document Manager when in Mass Update mode. This only changes the database fields that you enter data. All other fields remain as they are. Once all the data is entered select **Process**. For more detailed instructions on using **Mass Update** click on the link below [Instructions For Mass Update in Falcon](#)