

#0019  
#0019

#REF001  
#REF001

#REF002  
#REF002

#REF003  
#REF003

#REF004  
#REF004

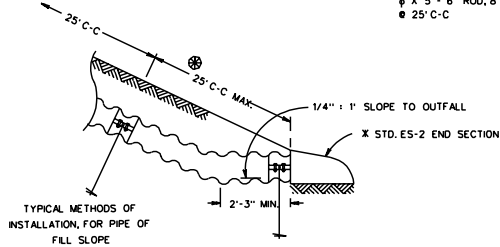
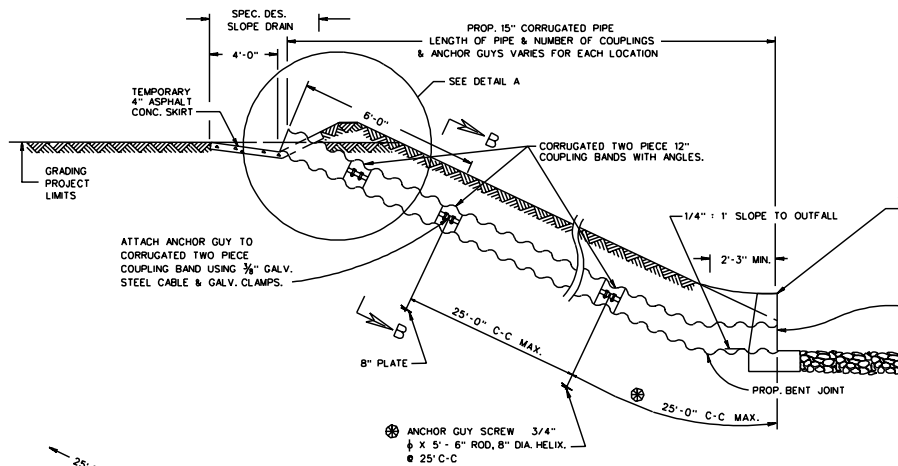
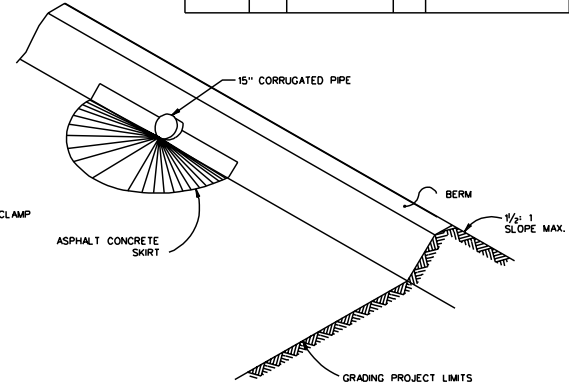
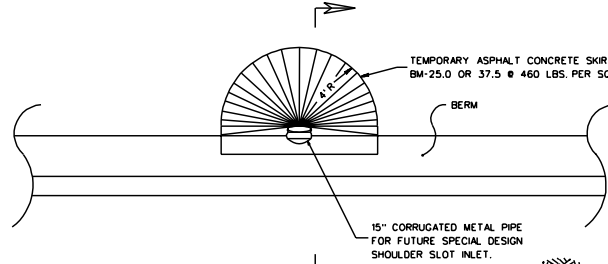
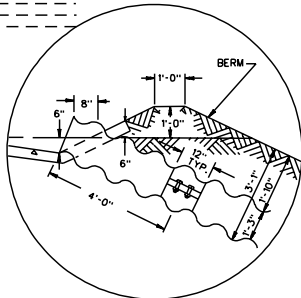
#REF005  
#REF005

#REF006  
#REF006

SURVEYED BY \_\_\_\_\_  
SUPERVISED BY \_\_\_\_\_  
DESIGNED BY \_\_\_\_\_

DESIGN FEATURES RELATING TO CONSTRUCTION OR TO REGULATION AND CONTROL OF TRAFFIC MAY BE SUBJECT TO CHANGE AS DEEMED NECESSARY BY THE DEPARTMENT

NO.	DATE	REVISION	BY	CHKD.	APP'D.



APPROXIMATE QUANTITIES
ASPHALT CONCRETE TYPE BM-25.0 OR 37.5
X X 4.78 SQ.YDS.

X X NOT TO BE USED AS A SEPARATE PAY ITEM, TO BE USED FOR BIDDING PURPOSES ONLY.

X PROPOSED 15" CORRUGATED PIPE MUST BE TERMINATED AT THE TOE OF THE FILL SLOPE WITH AN APPROPRIATE END TREATMENT, FOR 3:1 SLOPES AND FLATTER THE PIPE MAY BE TERMINATED WITH A STANDARD ES-2 END SECTION, OR TIED INTO ANOTHER DRAINAGE STRUCTURE. FOR SLOPES 3:1 AND STEEPER (MAXIMUM 1 1/2: 1) THE 15" PIPE MUST HAVE ONE OF THE FOLLOWING END TREATMENTS:

1. TERMINATE PIPE WITH A STANDARD ENDWALL OR OTHER DRAINAGE STRUCTURE. FOR PIPE LENGTHS LONGER THAN 50' COUPLING BANDS WITH ANCHOR GUYS ARE TO BE USED AT 25'-C MAXIMUM SPACING.
2. TERMINATE PIPE WITH A STANDARD ES-2 END SECTION ANCHORED WITH COUPLING BAND AND ANCHOR GUYS. ADDITIONAL COUPLING BANDS AND ANCHOR GUYS ARE TO BE PLACED 25'-C MAXIMUM FOR THE REMAINING LENGTH OF PIPE.

SPECIAL DESIGN SLOPE DRAIN WILL BE MEASURED AND PAID FOR IN LINEAR FEET OF 15" CORRUGATED PIPE COMPLETE IN PLACE. THIS PRICE SHALL INCLUDE FURNISHING AND PLACING SQ. YDS. OF ASPHALT CONCRETE BM-25.0 OR 37.5, 15" CORRUGATED PIPE COUPLINGS, ANCHOR GUYS AND SHALL BE FULL COMPENSATION FOR ALL MATERIALS, LABOR, TOOLS, EQUIPMENT AND INCIDENTALS NECESSARY TO COMPLETE THE WORK.

☆ 15" CORRUGATED POLYETHYLENE PIPE MAY BE USED AS AN ALTERNATE PROVIDED THE DESIGN FOR ANCHORAGE IS SUBMITTED BY THE MANUFACTURER FOR THE ENGINEERS REVIEW AND APPROVAL.

⊗ USE TWO (2) ANCHOR GUY SCREWS FOR EACH COUPLING BAND. TWO PIECE COUPLING BANDS ARE TO BE SPACED AT 25' C-C. WHEN THE SPACING OF THE LOWER COUPLING FALLS CLOSER THAN 25' TO THE DRAINAGE STRUCTURE THE DISTANCE IS TO BE ADDED TO THE LAST FULL 25' SPACING AND THE COUPLING IS TO BE SPACED MIDWAY OF THE TOTAL DISTANCE.

### SPECIAL DESIGN SLOPE DRAIN

REVISED 12/99  
SPECIAL DESIGN SECTION  
DRAWING NO. 1482

NO.	DATE	REVISION	BY	CHKD.	APP'D.

#1482/ST/AMPS