

SURVEYED BY -----
SUPERVISED BY -----
DESIGNED BY -----

DESIGN FEATURES RELATING TO CONSTRUCTION OR TO REGULATION AND CONTROL OF TRAFFIC MAY BE SUBJECT TO CHANGE AS DEEMED NECESSARY BY THE DEPARTMENT

| | | | | | |
|---------|-------|---------------------|-------|---------------|-----------|
| REVISED | STATE | FEDERAL AID PROJECT | ROUTE | STATE PROJECT | SHEET NO. |
| | | | | | |

GR-8,8A,8B,8C

| STANDARD | POST SPACING | DEFLECTION |
|----------|--------------|------------|
| GR-8 | 12' - 6" | 7' - 0" |
| GR-8A | 6' - 3" | 5' - 0" |
| GR-8B | 3' - 1 1/2" | 4' - 0" |
| GR-8C | 4' - 2" | 4' - 6" |

FOR ROCK INSTALLATION, 8" X 24" X 1/4" PLATE IS TO BE ELIMINATED, DRILL OR EXCAVATE HOLE FOR POST, PLACE POST AND BACKFILL WITH CRUSHER RUN AGGREGATE TO LEVEL OF ROCK.

ALL POSTS, BOLTS, NUTS AND WASHERS ARE TO BE GALVANIZED.

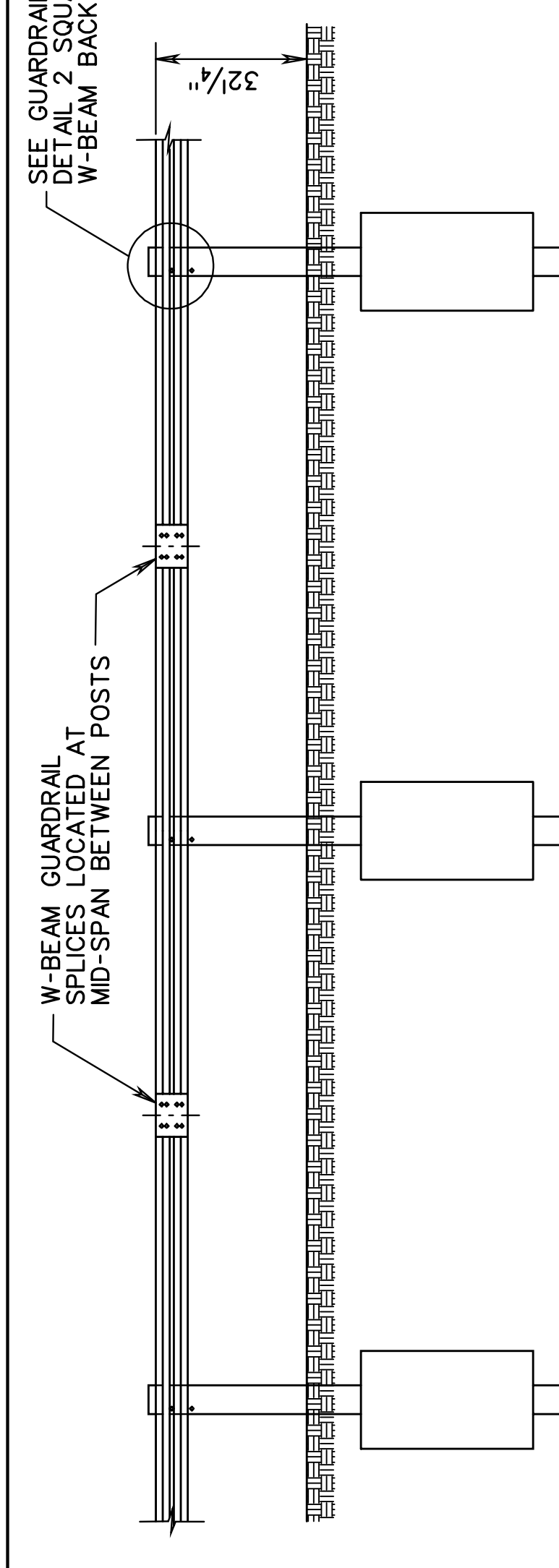
FOR DETAILS OF GUARDRAIL ELEMENT, SPLICE JOINT, HARDWARE, ETC. SEE SHEET NO. 501.01.

THE GUARDRAIL AND MEDIAN BARRIER COMPONENTS DEPICTED IN A.R.T.B.A. TECHNICAL BULLETIN NUMBER 268B MAY BE SUBSTITUTED IF INTERCHANGEABLE WITH THE STANDARDS FOR GUARDRAIL (GR) OR MEDIAN BARRIER (MB) AND APPROVED BY THE ENGINEER.

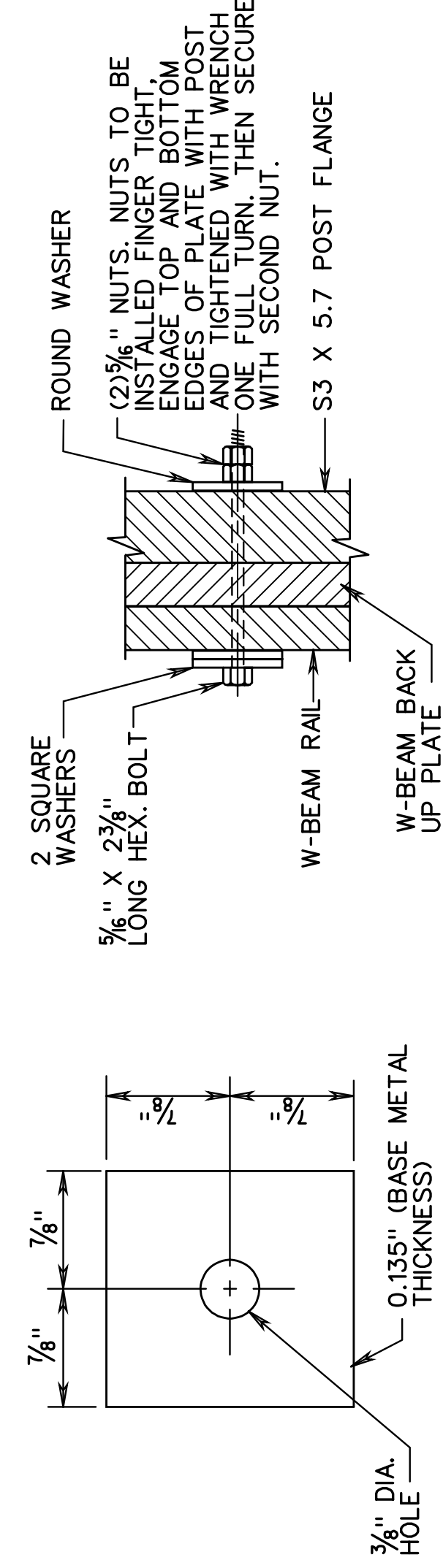
POST SPACING ON CURVES

| PAVEMENT | Q RADIUS | POST SPACING |
|-------------------|----------|--------------|
| > 220 FT. | R | 12' - 6" |
| 219 FT. - 111 FT. | | 6' - 3" |
| 110 FT. - 76 FT. | | 4' - 2" |
| 75 FT. - 50 FT. | | 3' - 1 1/2" |

USE NOT RECOMMENDED < 50 FT.

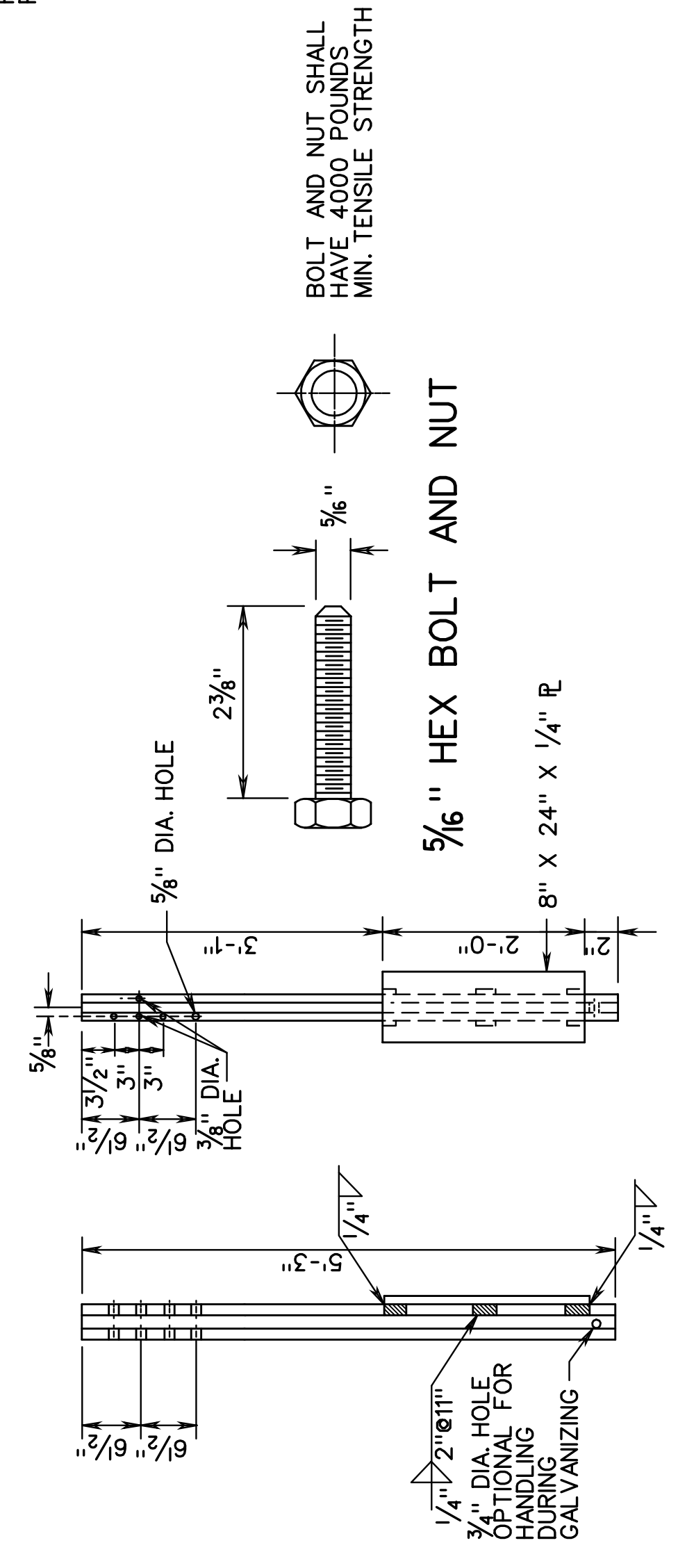


TYPICAL INSTALLATION

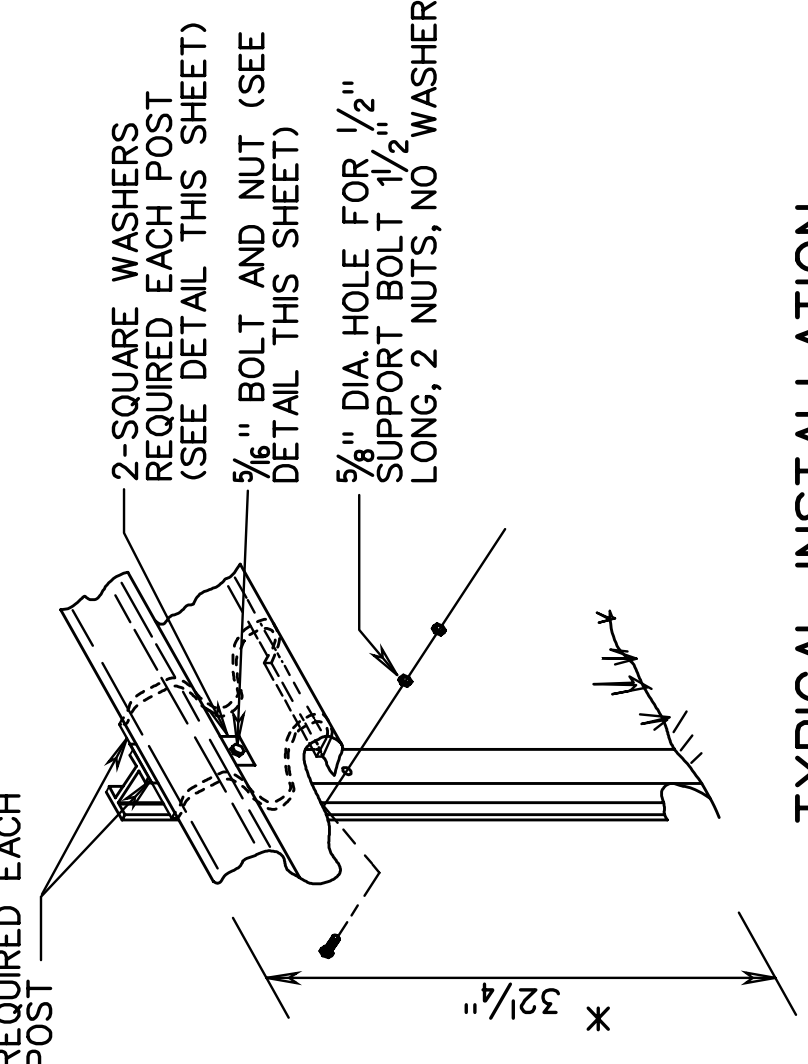


SQUARE WASHER

GUARDRAIL POST CONNECTION DETAIL



S 3 X 5.7 STEEL POST



TYPICAL INSTALLATION

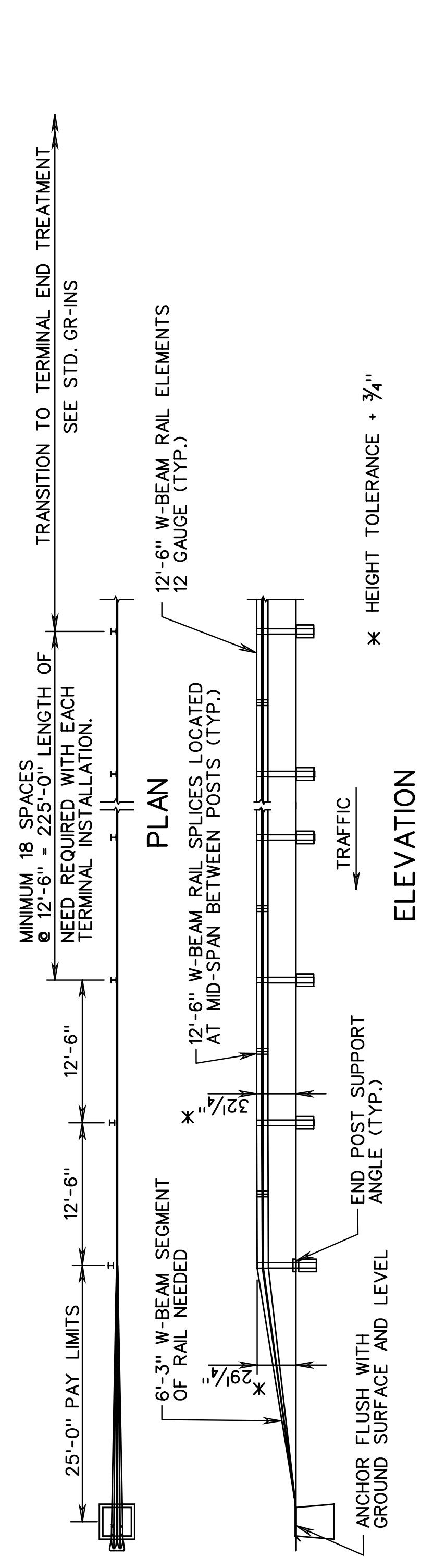
* HEIGHT TOLERANCE ± 3/4"

SHEET 1 OF 2

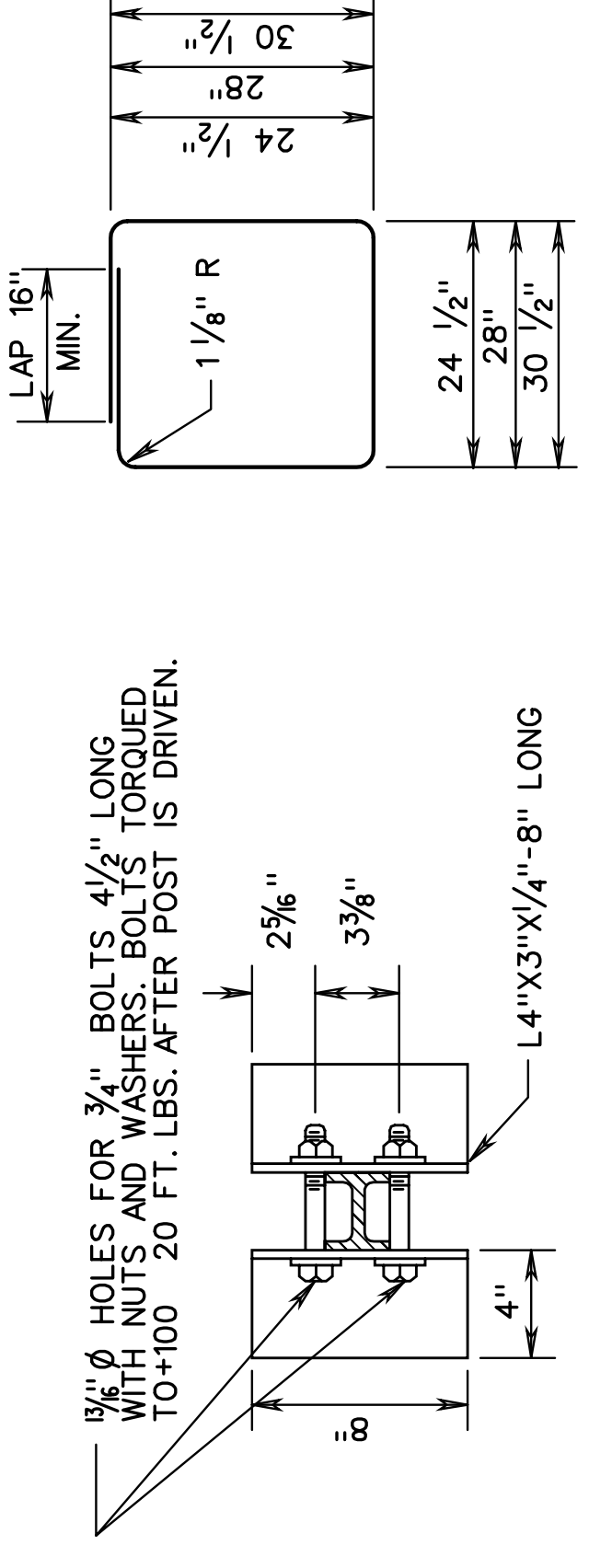
STANDARD W BEAM GUARDRAIL (WEAK POST SYSTEM)
TL-3 (>45 MPH)
VIRGINIA DEPARTMENT OF TRANSPORTATION

| | |
|-------------------------|---------|
| SPECIFICATION REFERENCE | 221 505 |
| REV. 2/ 08 | 501.14 |

GR-8,8A,8B,8C

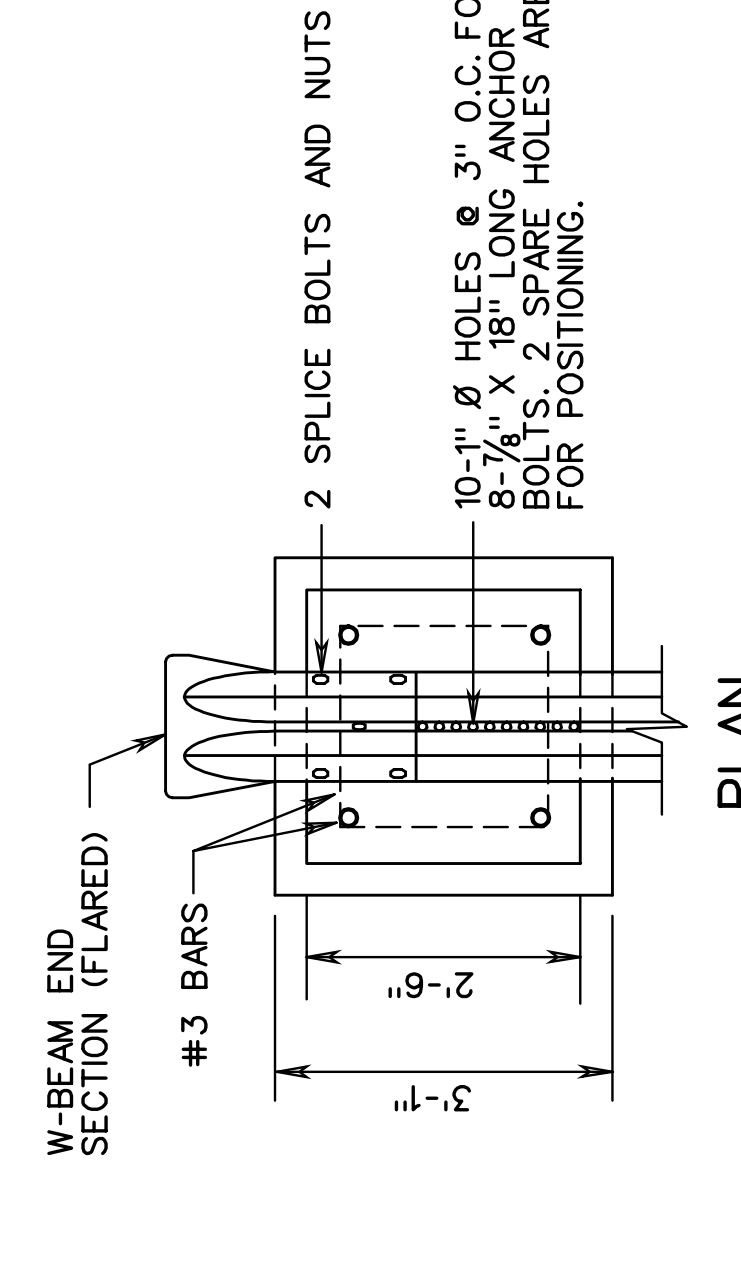


ELEVATION

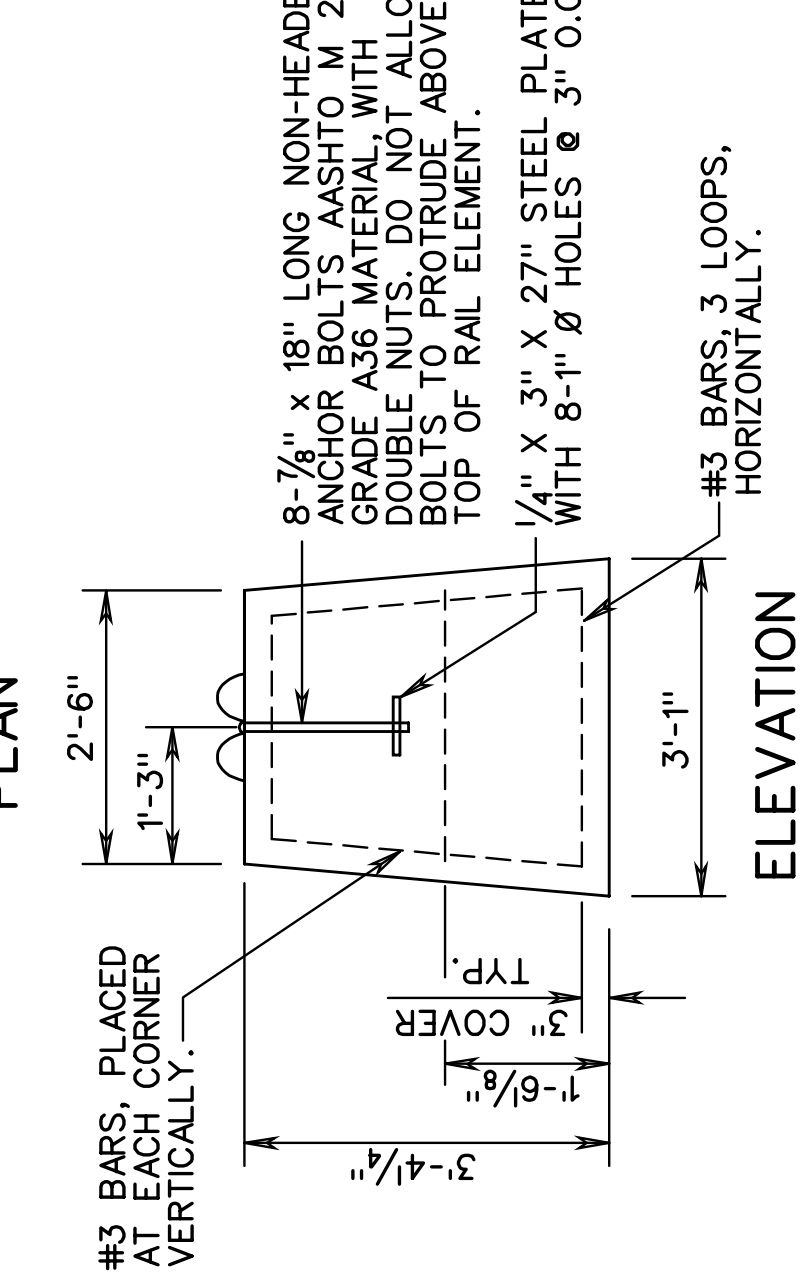


END POST SUPPORT ANGLES

3 LOOP BAR REINFORCING DETAILS



PLAN



ANCHOR BLOCK DETAILS

GR-8 TYPE II TERMINAL TREATMENT (RUN-OFF ANCHORAGE)

STANDARD W BEAM GUARDRAIL (WEAK POST SYSTEM)
TL-3 (>45 MPH)
VIRGINIA DEPARTMENT OF TRANSPORTATION

| | |
|--------------|---------|
| SHEET 2 OF 2 | 221 505 |
| REV. 2/ 08 | 501.15 |

REV. 2/ 08
SPECIAL DESIGN SECTION
DRAWING NO. A-91

| | | | |
|----------|---------|----------|-----------|
| PLAN NO. | PROJECT | FILE NO. | SHEET NO. |
| | | | |