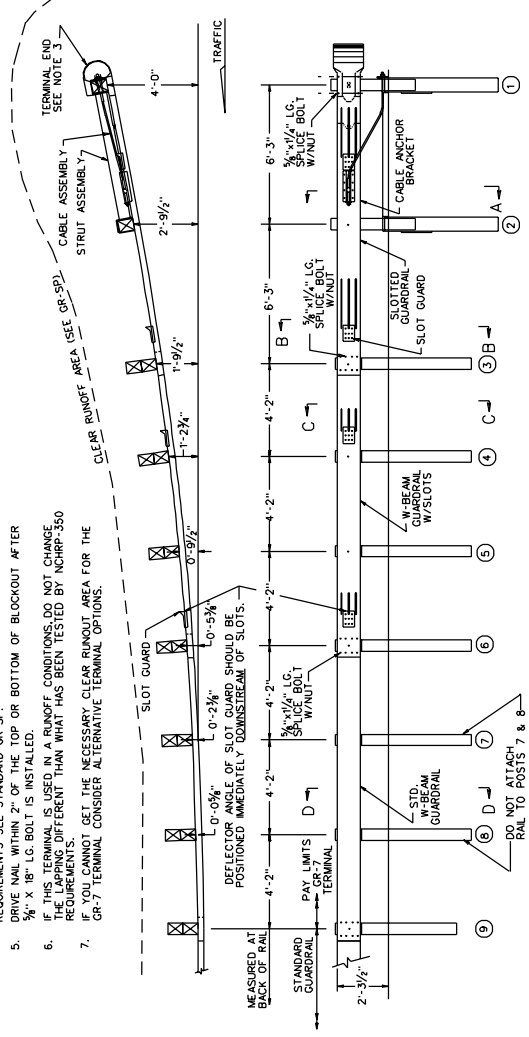


SURVEYED BY _____
SUPERVISED BY _____
DESIGNED BY _____

GR-7

- NOTES:
1. GUARDRAIL TERMINAL, STD. GR-7 IS TO BE SRT. 350 (AS SHOWN) MANUFACTURED BY SYRO STEEL COMPANY, THE FLEAT 350 MANUFACTURED BY ROAD SYSTEMS, INC., OR OTHER VDOT APPROVED EQUAL MEETING NCHRP 350 TESTING CRITERIA UTILIZING A 4 FT. OFFSET.
 2. THE POST OFFSET DIMENSIONS ARE GIVEN TO THE CENTER OF THE TRAFFIC FACE OF THE POST. THE DIMENSIONS TO THE CENTER OF THE TRAFFIC FACE OF THE POST. THE DIMENSION IS TO THE CENTER OF THE TRAFFIC FACE OF THE POST. THE OFFSET POINTS ARE TO BE LOCATED BY CHORD MEASUREMENT AT THE BACK OF THE RAIL EQUAL TO THE NOMINAL POST SPACINGS SHOWN. POST ARE TO BE SET APPROXIMATELY RADIAL TO THE RAILING AT EACH POST LOCATION.
 3. YELLOW 8" X 36" REFLECTIVE SHEETING IN ACCORDANCE WITH VDOT SPECIFICATIONS SHOULD BE APPLIED IN TERMINALS EMPLOYING STANDARD SECTION OF TRAFFIC SIGNING (IMPACT ATTENUATOR) HEAD AND END SECTIONS OF TRAFFIC SIGNING (IMPACT ATTENUATOR) HEAD AND END SECTIONS OF TRAFFIC SIGNING (IMPACT ATTENUATOR) STRIPES SHOULD BE APPLIED TO THE FULL AREA INSIDE THE IMPACT HEAD WITH THE DIRECTION OF THE BLACK DIAGONAL STRIPES CONFORMING TO THE VDOT SPECIFICATION FOR TYPE 3 OBSOLETE SIGNERS (04-3). FOR DETAILS OF GUARDRAIL TERMINAL INSTALLATION SITE PREPARATION REQUIREMENTS SEE STANDARD CR-SP.
 4. DRIVE NAIL WITHIN 2" OF THE TOP OR BOTTOM OF BLOCKOUT AFTER
 5. IF THIS TERMINAL IS USED IN A RUNOFF CONDITIONS, DO NOT CHANGE THE LAPPING DIFFERENT THAN WHAT HAS BEEN TESTED BY NCHRP-350 REQUIREMENTS.
 6. IF YOU CANNOT GET THE NECESSARY CLEAR RUNOUT AREA FOR THE GR-7 TERMINAL CONSIDER ALTERNATIVE TERMINAL OPTIONS.



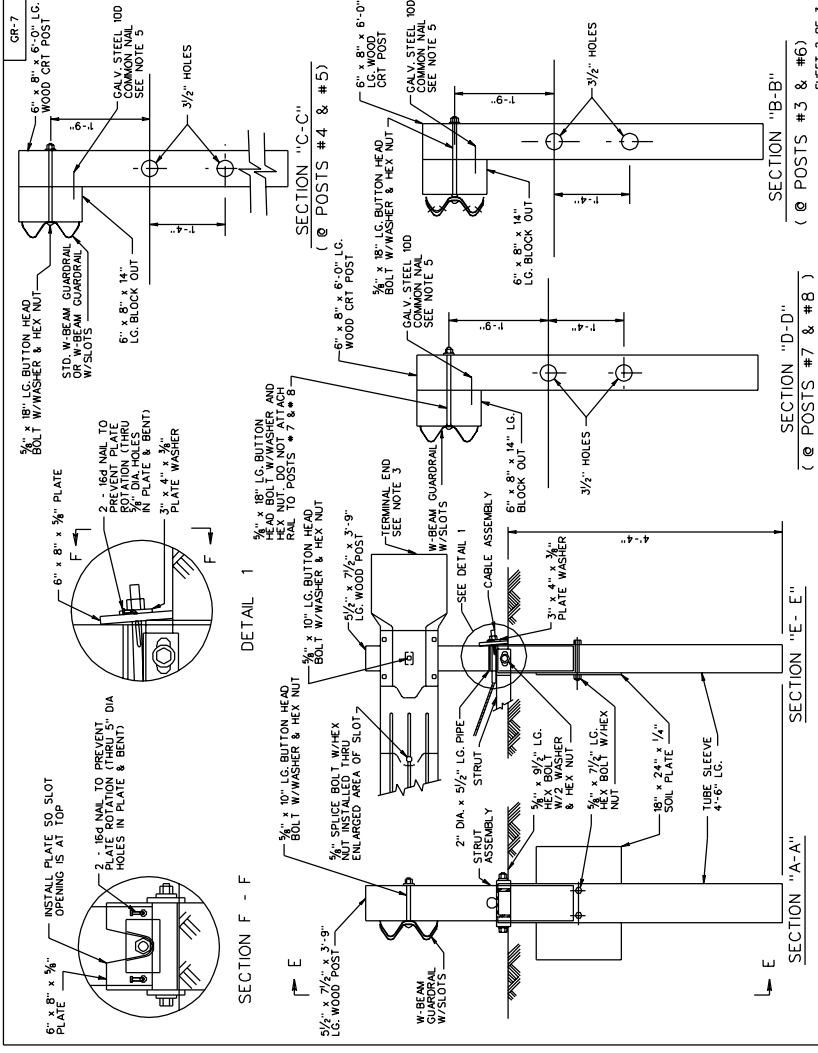
SHEET 1 OF 3

BREAKAWAY CABLE TERMINAL
4' FLARE

VIRGINIA DEPARTMENT OF TRANSPORTATION

SPECIFICATION
REFERENCE
221
505

REV. 7/03
501.11



Rev. 7/03
SPECIAL DESIGN SECTION
DRAWING NO. A-89

DESIGN FEATURES RELATING TO CONSTRUCTION OR TO REGULATION AND CONTROL OF TRAFFIC MAY BE SUBJECT TO CHANGE AS DEEMED NECESSARY BY THE DEPARTMENT

NO.	DATE	PERSON AND PROJECT	REVISION	SCALE	PROJECT

SECTION "B-B"
(@ POSTS #3 & #6)
SHEET 2 OF 3

SECTION "D-D"
(@ POSTS #7 & #8)

SECTION "E-E"

SECTION "A-A"

SPECIFICATION
REFERENCE
221
505

BREAKAWAY CABLE TERMINAL
4' FLARE

VIRGINIA DEPARTMENT OF TRANSPORTATION

REV. 7/02
501.12