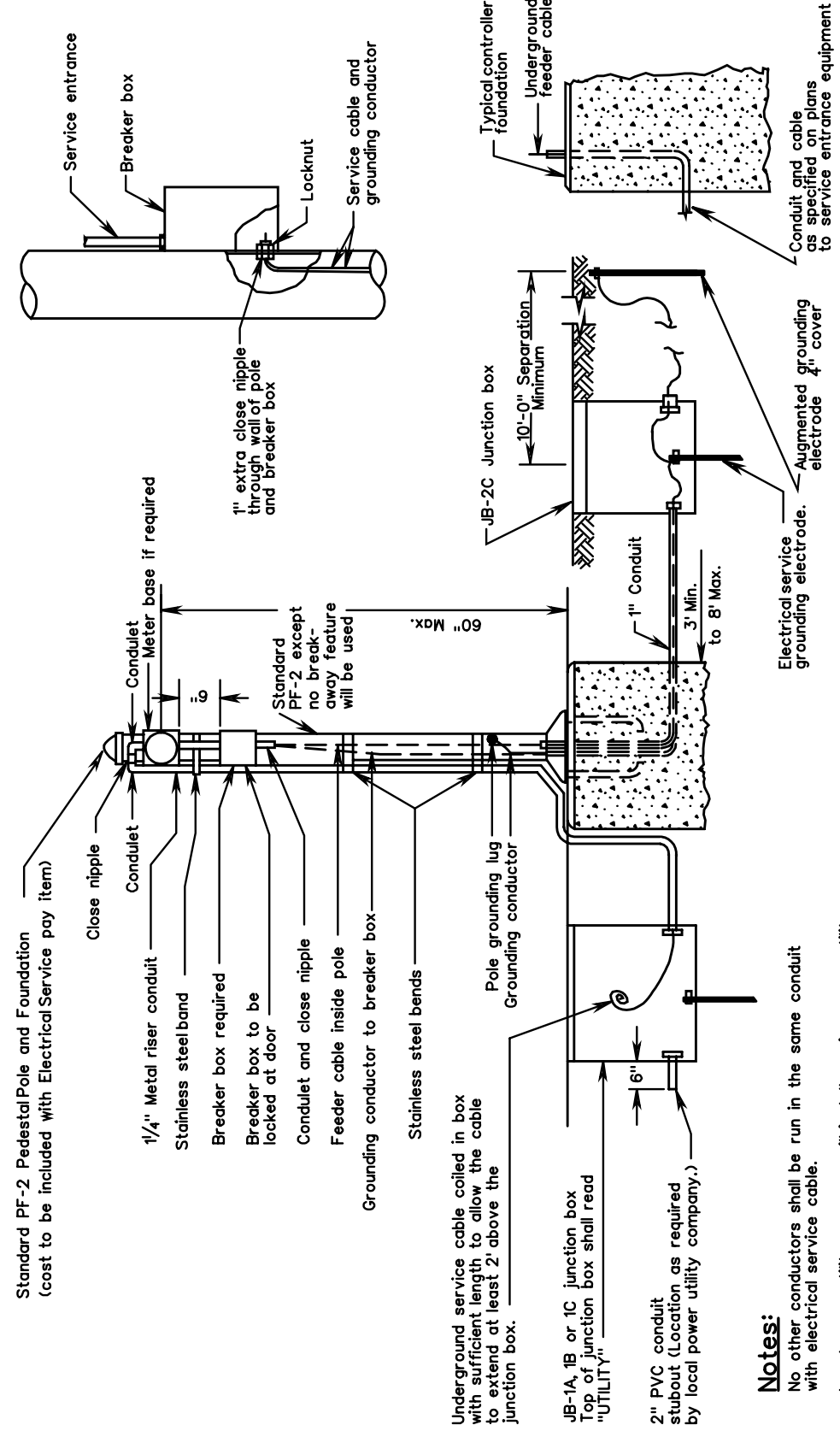


PLAN	
NOTE BOOK	
NO.	

SUPERVISED BY: _____
DESIGNED BY: _____
CADD OPERATOR: _____
REVISED BY: _____

SE-5

ALTERNATE METHOD OF SERVICE CABLE AND GROUNDING CONDUCTOR ENTERING BREAKER BOX



Notes:

No other conductors shall be run in the same conduit with electrical service cable.

Local power utility company will install service power utility cable from their power source to the junction box and make required splices to the service cable coiled in the junction box.

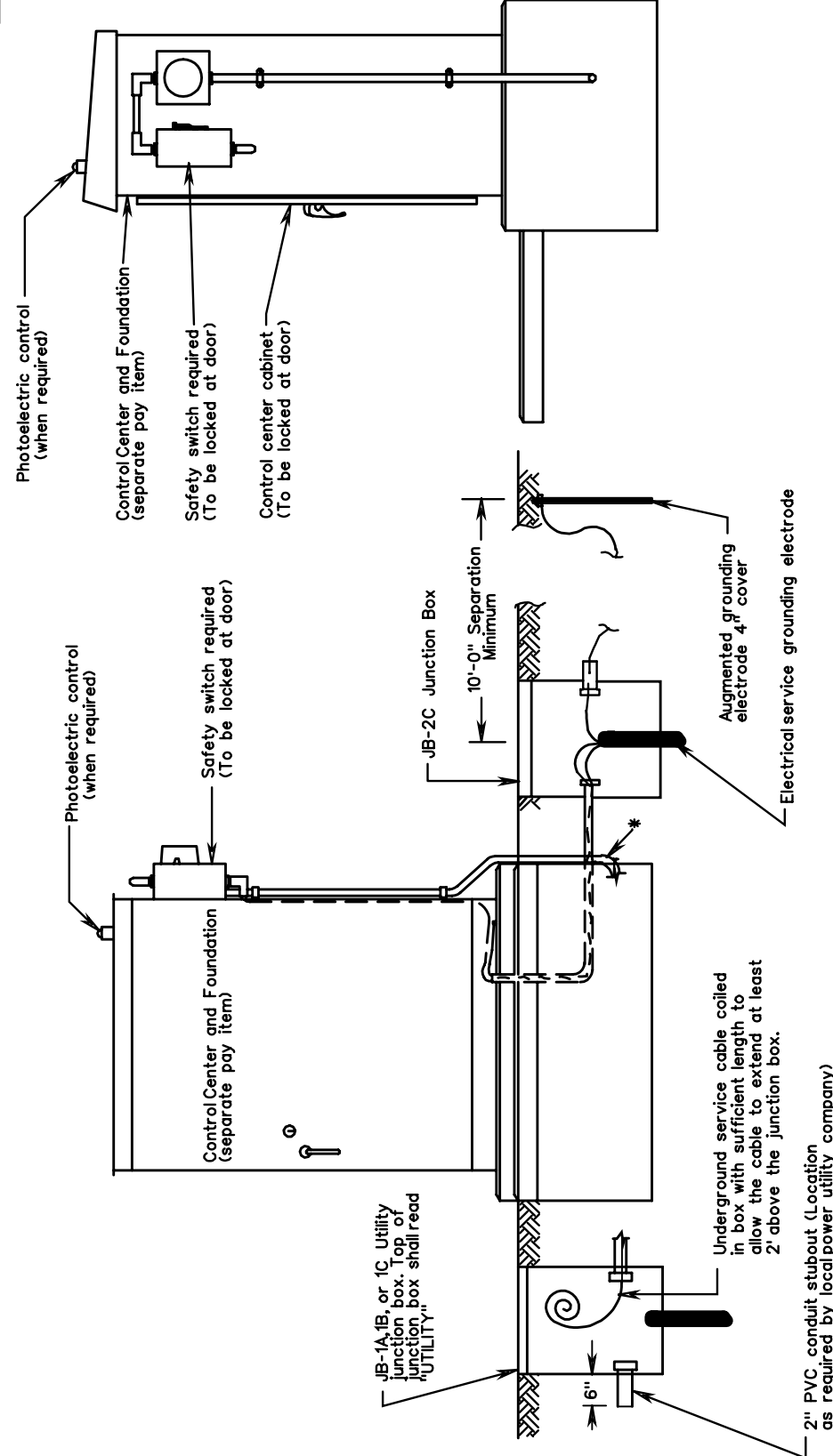
PEDESTAL POLE WITH GROUND MOUNTED CABINET

ELECTRICAL SERVICE DETAILS SIGNAL INSTALLATION

VIRGINIA DEPARTMENT OF TRANSPORTATION

REV. 2/06
1301.36

SE-6



Notes:

* The conduit and service cable shall extend from the cabinet to the utility junction box.

The control center cabinet at the inside and outside foundation joints shall be sealed with a silicone sealant

For alternate method of service cable entering safety switch see Standard SE-5.

When 200 amp or greater service is required, service shall enter meter base at right bottom.

No other conductors shall be run in the same conduit with electrical service cable.

Local power utility company will install service power utility cable from their power source to the junction box and make required splices to the service cable coiled in the junction box.

This standard is applicable for all electrical services other than 480Y/277. For 480Y/277 service, see Standard SE-9.

DESIGN FEATURES RELATING TO CONSTRUCTION OR TO REGULATION AND CONTROL OF TRAFFIC MAY BE SUBJECT TO CHANGE AS DEEMED NECESSARY BY THE DEPARTMENT

REVISED	FIRM REGION	STATE	FEDERAL AID PROJECT	ROUTE	STATE PROJECT	SHEET NO.
	3	VA				

NEW 2/06
SPECIAL DESIGN SECTION
DRAWING NO. A - 175

ELECTRICAL SERVICE DETAILS SIGN AND LIGHTING INSTALLATIONS

VIRGINIA DEPARTMENT OF TRANSPORTATION

REV. 2/06
1301.37

PLAN NO.	PROJECT	FILE NO.	SHEET NO.
A			