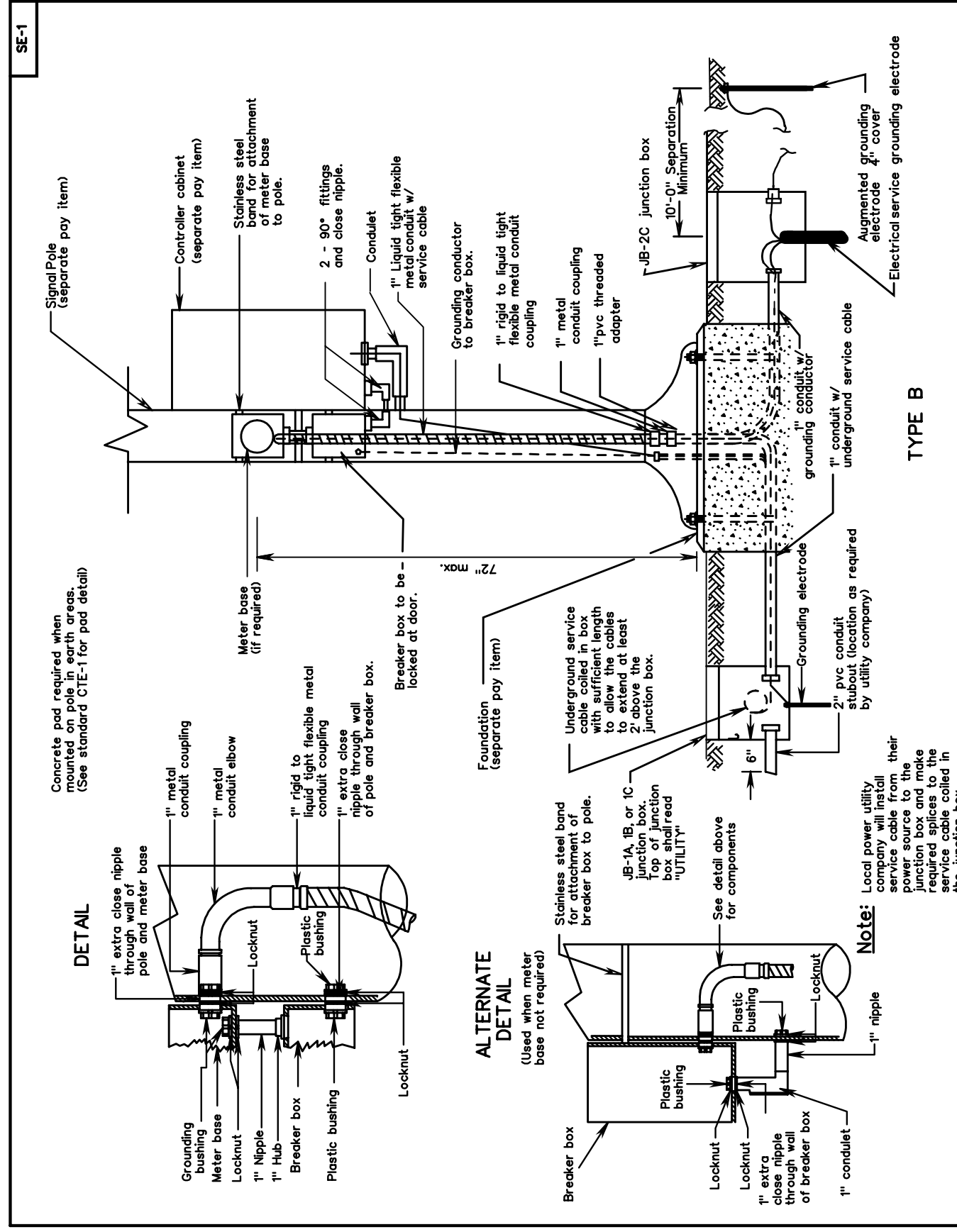


PLAN	NO.
NOTE BOOK	NO.
REVISION	NO.

SUPERVISED BY: _____
DESIGNED BY: _____
CHECKED BY: _____
REVISION BY: _____



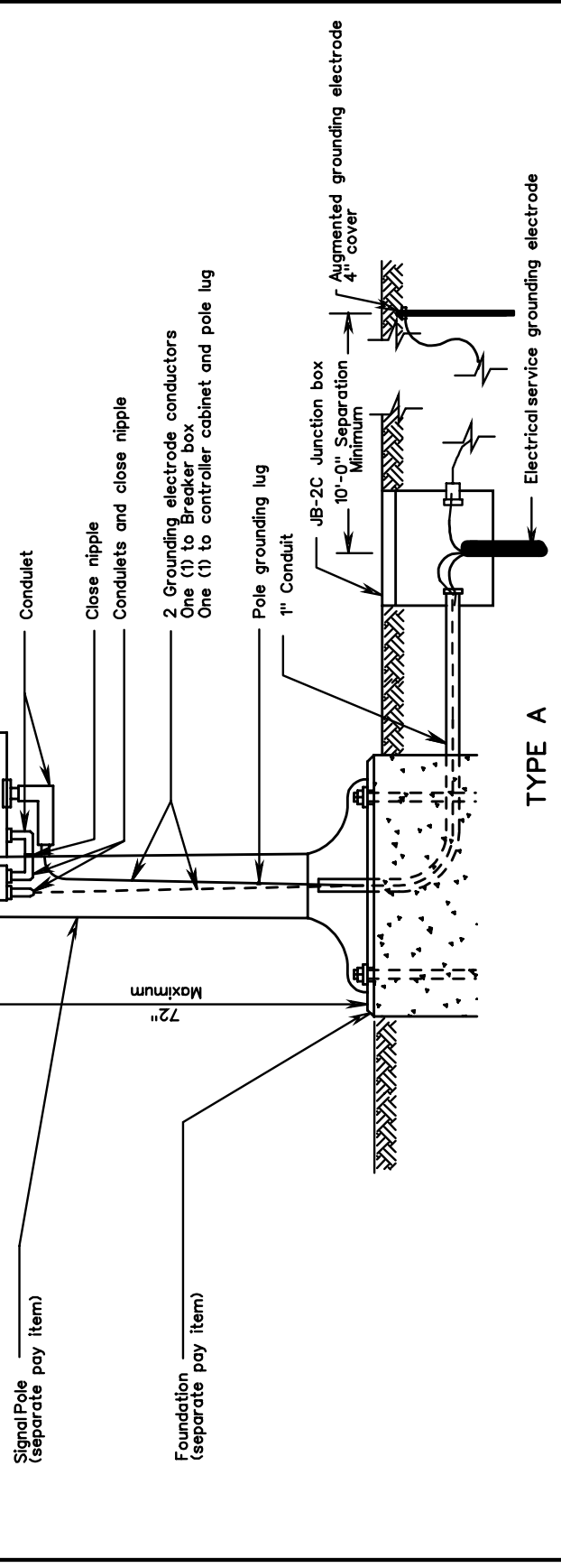
ELECTRICAL SERVICE DETAILS
SIGNAL INSTALLATION
VIRGINIA DEPARTMENT OF TRANSPORTATION

REV. 2/06
1301.31

Note: Local power utility company will install service cable from their power source to the junction box and make required splices to the service cable coiled in the junction box.

ALTERNATE DETAIL
(Used when meter base not required)

Notes:
No other conductors shall be run in the same conduit with electrical service cable.
Concrete pad required when cabinet mounted on pole in earth areas. (See Standard CTE-1 for pad detail).
For alternate method of grounding conductor entering breaker box see Standard SE-5.



ELECTRICAL SERVICE DETAILS
SIGNAL INSTALLATIONS
VIRGINIA DEPARTMENT OF TRANSPORTATION

REV. 2/06
1301.30

NEW 2/06
SPECIAL DESIGN SECTION
DRAWING NO. A - 172

DESIGN FEATURES RELATING TO CONSTRUCTION OR TO REGULATION AND CONTROL OF TRAFFIC MAY BE SUBJECT TO CHANGE AS DEEMED NECESSARY BY THE DEPARTMENT	REVISED	FUND REGION	STATE	FEDERAL AID PROJECT	ROUTE	STATE PROJECT	SHEET NO.
		3	VA				

PLAN NO.	PROJECT	FILE NO.	SHEET NO.
A			