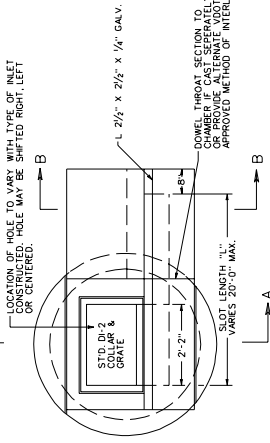


SURVEYED BY _____
 DESIGNED BY _____

#REF00
#REF01
#REF02
#REF03
#REF04
#REF05
#REF06

PIPE SIZE	RECOMMENDED MINIMUM HEIGHT CHART (CONCRETE PIPE)
12"	4'-8"
15"	4'-10 1/2"
18"	5'-2 1/2"
21"	5'-5 3/4"
24"	5'-9"
27"	6'-0 1/4"
30"	6'-6 1/2"
33"	6'-9 3/4"
36"	7'-1 1/4"
42"	7'-3 1/2"
48"	8'-2"

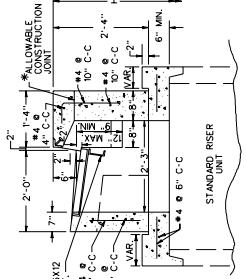
T-DI-2



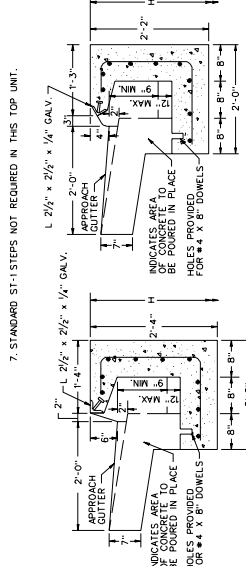
PLAN

NOTE: THROAT SECTION TO CHAMBER TO BE CAST SEPARATELY OR PROVIDE ALTERNATE NOTCH APPROVED METHOD OF INTERLOCK.

NOTES
 1. SEE GENERAL NOTES - PRECAST FOR ADDITIONAL DETAILS.
 2. CONCRETE TO BE 4000 P.S.I. MINIMUM.
 3. REINFORCING STEEL IN ACCORDANCE WITH ASTM A-615.
 4. MANUFACTURER'S DIMENSIONS ARE MINIMUM. ACTUAL DIMENSIONS MAY VARY WITH MANUFACTURER'S DIMENSIONS.
 5. FOR DETAILS OF FRAME AND GRATE SEE STANDARD DI-2A, B, C.
 * 6. VERTICAL REINFORCING BARS NOT REQUIRED IN THIS TOP UNIT.
 7. STANDARD ST-1 STEPS NOT REQUIRED IN THIS TOP UNIT.



SECTION A-A



SECTION B-B
 (CG-6 CURB AND GUTTER)

ALTERNATE SECTION B-B
 (FOR USE WITH CG-7 CURB AND GUTTER)

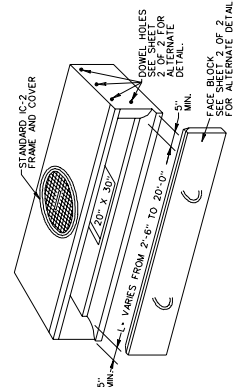
SPECIFICATION REFERENCE
 MS 233
 302

REV. 3/03
 103.04

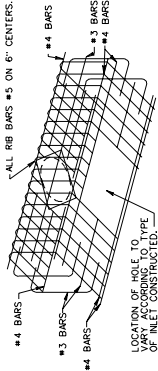
STANDARD PRECAST TOP UNITS

VIRGINIA DEPARTMENT OF TRANSPORTATION

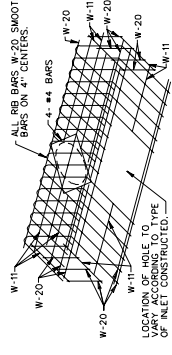
T-DI-3.4
 CURB DROP INLET THROAT SECTION



NOTE: LOCATION OF HOLE TO VARY ACCORDING TO TYPE OF INLET CONSTRUCTED.



TYPICAL MINIMUM BAR REINFORCEMENT



SHEET 1 OF 2

REVISED 3/03
 SPECIAL DESIGN SECTION
 DRAWING NO. S-148

NOTES:

- SEE GENERAL NOTES - PRECAST FOR ADDITIONAL DETAILS.
- CONCRETE TO BE 4000 P.S.I. MINIMUM COMPRESSIVE STRENGTH.
- REINFORCING STEEL IN ACCORDANCE WITH ASTM A-615 FOR REINFORCING BARS.
- REINFORCING IN ACCORDANCE WITH ASTM A-185 FOR WELDED WIRE MESH.
- MANUFACTURER'S DIMENSIONS ARE MINIMUM. ACTUAL DIMENSIONS MAY VARY WITH MANUFACTURER'S DIMENSIONS.
- THIS UNIT MAY BE USED WITH ALL STANDARD DI-3 & DI-4 CURB DROP INLETS.
- EACH FACE BLOCK SHALL HAVE 2 OR MORE LOOPS (#3 BARS) AS PART OF FACE BARS FROM THE TOP OF THE CURB TO THE CURB DROP INLET. THESE LOOPS MAY BE PLACED AT THE CURB DROP INLET. FACE BARS ARE TO BE SEALED WITH GROUT OR POLYURETHANE SEALER.
- STANDARD ST-1 STEPS NOT REQUIRED IN THIS TOP UNIT.

RECOMMENDED MINIMUM HEIGHT CHART

PIPE SIZE	H. DIMENSION CONCRETE PIPE
6"	2'-11"
8"	3'-1 1/2"
10"	3'-3 1/4"
12"	3'-6"
18"	3'-9 1/4"
21"	4'-0 1/2"
24"	4'-3 1/4"
27"	4'-6"
30"	4'-9 1/4"
33"	5'-1 1/2"
36"	5'-4 1/4"
42"	6'-0"
48"	7'-0"

SPECIFICATION REFERENCE
 105
 233
 302

STANDARD PRECAST TOP UNITS

VIRGINIA DEPARTMENT OF TRANSPORTATION

SHEET 1 OF 2