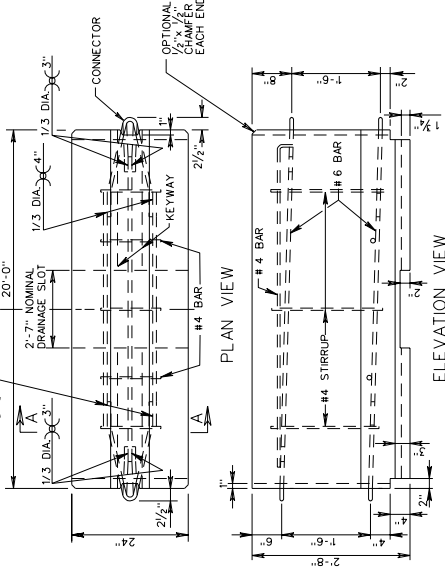
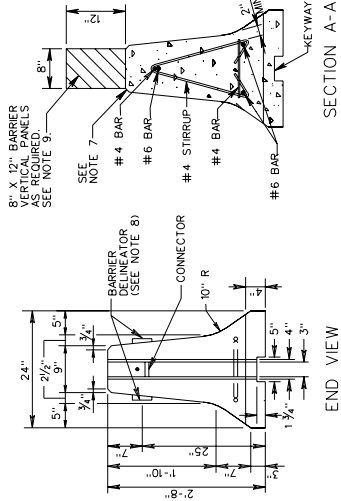


MB-7D PC



ELEVATION VIEW



END VIEW

SECTION A-A

SHEET 1 OF 2

PRECAST TRAFFIC BARRIER SERVICE CONCRETE

VIRGINIA DEPARTMENT OF TRANSPORTATION

SPECIFICATION REFERENCE

105  
512

- NOTES:
- FOR POSITIVE CONNECTION DETAILS AND DIMENSIONS SEE SHEETS 501.59 - 501.61.
  - AT THE OPTION OF THE MANUFACTURER, ADDITIONAL REINFORCING MAY BE ADDED TO THE PRECAST CONCRETE BARRIER FOR HANDLING.
  - CONCRETE SHALL BE 4000 P.S.I. MINIMUM.
  - BARRIER DELINEATOR SIZE, COLOR, AND SPACING SHALL BE IN ACCORDANCE WITH THE SPECIFICATIONS.
  - COST OF DELINEATOR SHALL BE INCLUDED IN THE PRICE BID FOR TRAFFIC BARRIER SERVICE.
  - OTHER PRECAST TRAFFIC BARRIER SERVICE CONCRETE PRODUCTS THAT MEET THE REQUIREMENTS AND HAVE BEEN ACCEPTED BY VDOT AS AN ACCEPTABLE ALTERNATE TO THE STANDARD DESIGN MAY BE SUBSTITUTED.
  - A 1" RADIUS MAY BE USED AS AN ALTERNATE FOR THE 3/4" CHAMFER.
  - BARRIER DELINEATOR REFLECTIVE SURFACE IN ALL INSTANCES SHALL BE FACING ONCOMING TRAFFIC.
  - BARRIER VERTICAL PANELS SHALL BE SPACED IN ACCORDANCE WITH VIRGINIA WORK AREA PROTECTION MANUAL.

WHEN USING VDOT STANDARD MB-7D PC WITH THE PIN AND LOOP POSITIVE CONNECTION, ALLOW 60" OF BARRIER UPSTREAM AND DOWNSTREAM OF WORK ZONE FOR ANCHORAGE. REFER TO MANUFACTURER'S INSTALLATION INSTRUCTIONS FOR DEFLECTIONS AND ANCHORAGE.

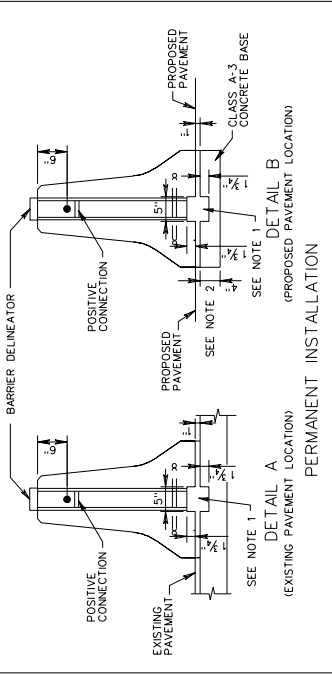
DESIGN SPEED	FLARE RATES *		BEYOND SHY LINE
	SHY LINE	FLARE RATE	
MPH	SHY LINE	FLARE RATE	
70	10'	30:1	20:1
60	8'	26:1	18:1
50	6.5'	21:1	14:1
40	5'	16:1	10:1
30	3.5'	13:1	8:1

\* SUGGESTED MAXIMUM FLARED RATE FOR ROAD BARRIER SYSTEMS.

REV. 7/05

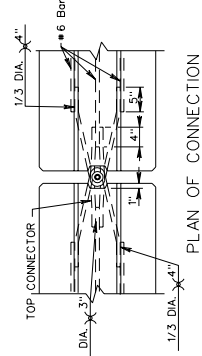
501.45

MB-7D PC

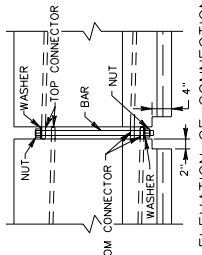


NOTES:

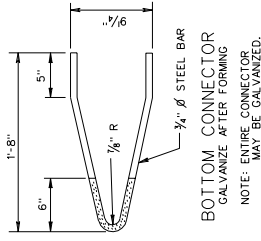
- HIGH STRENGTH GROUT OR MORTAR SHALL BE IN ACCORDANCE WITH SECTION 218 OF THE SPECIFICATIONS.
- 4" MIN. OR VARIABLE TO CONCLUDE WITH SUBGRADE COURSE.
- WHEN USED AS MEDIAN BARRIER, IN A PERMANENT LOCATION, DRAINAGE SLOTS WILL BE COMPLETELY FILLED AND SEALED WITH MORTAR OR GROUT UNLESS UNIT WILL BE LOCATED OVER MEDIAN DRAINAGE STRUCTURE.
- BARRIER DELINEATOR SIZE, COLOR, AND SPACING SHALL BE IN ACCORDANCE WITH THE SPECIFICATIONS.
- COST OF DELINEATOR TO BE INCLUDED IN THE PRICE BID FOR MEDIAN BARRIER.
- REFLECTIVE SURFACE OF BARRIER DELINEATOR IN ALL INSTANCES SHALL BE FACING ONCOMING TRAFFIC.
- PIN AND CONNECTORS SHALL BE ASTM-A36. REINFORCING STEEL BARS SHALL BE ASTM A 615 GRADE 60. ONE CONNECTOR PIN ASSEMBLY WITH EACH BARRIER SECTION.



PLAN OF CONNECTION

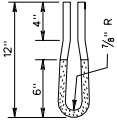


ELEVATION OF CONNECTION



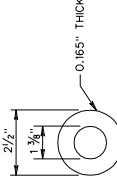
BOTTOM CONNECTOR

GALVANIZED AFTER FORMING  
 NOTE: ENTIRE CONNECTOR MAY BE GALVANIZED.

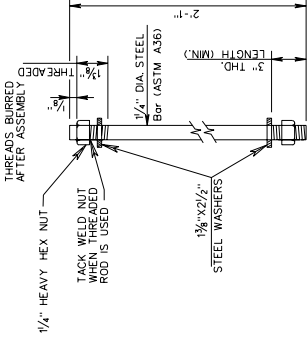


TOP CONNECTOR

PLAIN GALVANIZED STEEL WASHER FOR 1/4" PIN

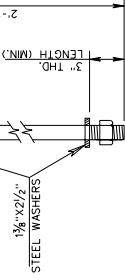


CONNECTOR PIN ASSEMBLY  
 GALVANIZE AFTER FABRICATION



1/4" HEAVY HEX NUT

TACK WELD NUT WHEN THREADED ROD IS USED



STEEL WASHERS

SPECIAL DESIGN SECTION  
 DRAWING NO. A103

REV. 7/05

105  
512

SHEET 2 OF 2

PRECAST TRAFFIC BARRIER SERVICE CONCRETE

VIRGINIA DEPARTMENT OF TRANSPORTATION

SPECIFICATION REFERENCE

105  
512