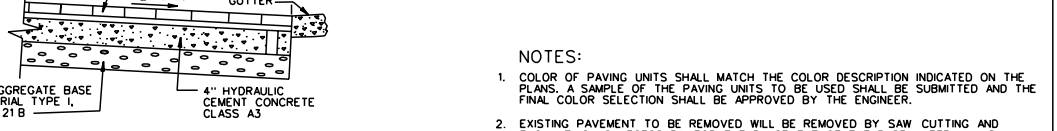
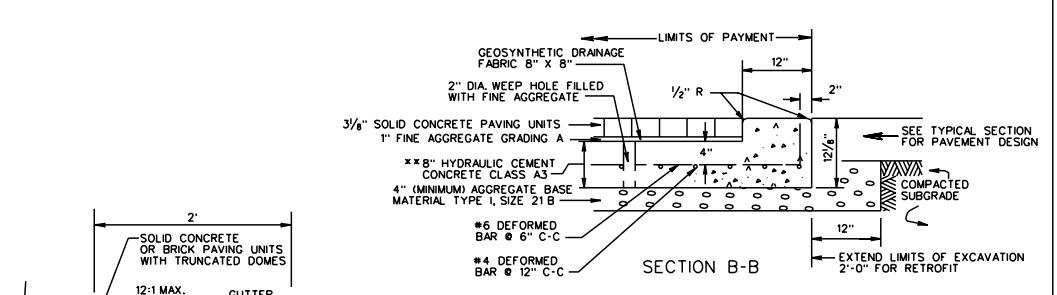
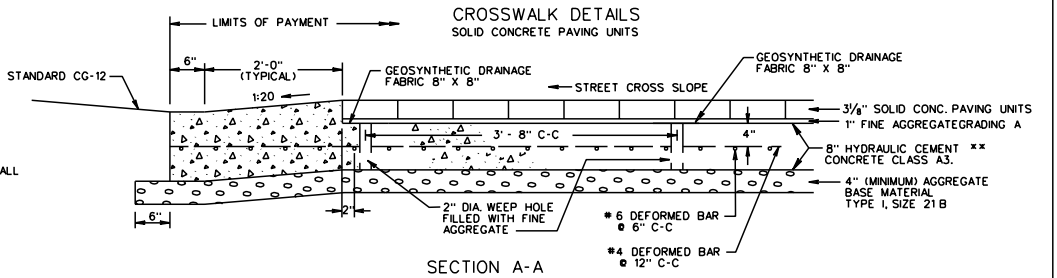
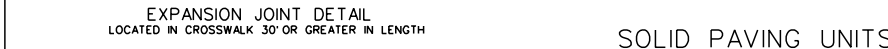
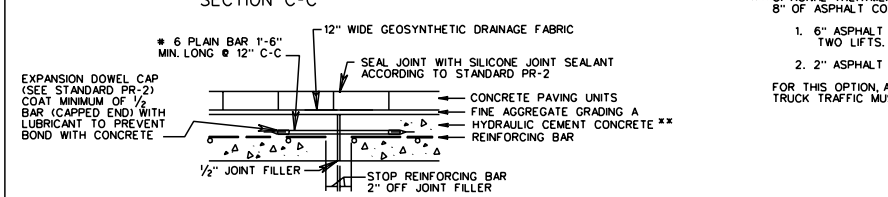
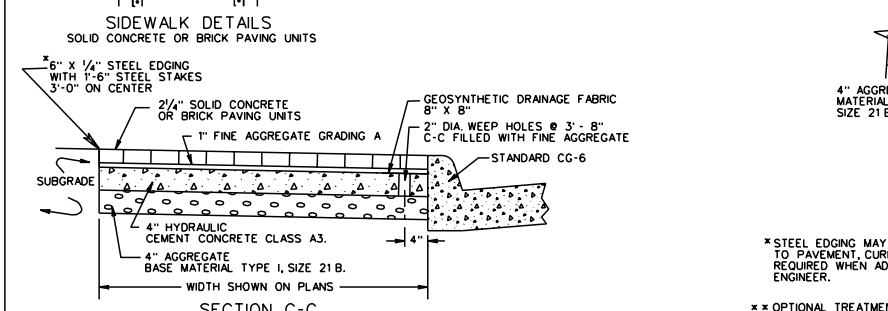
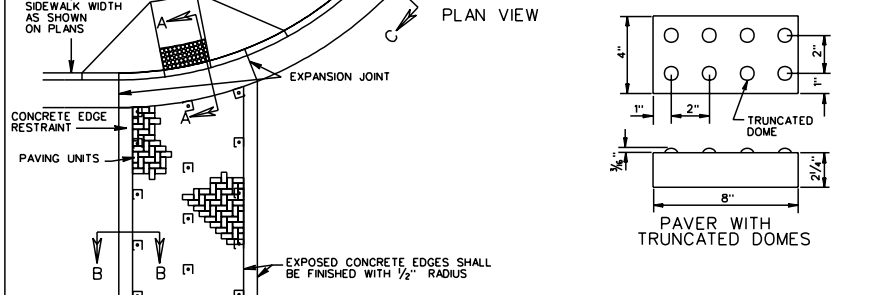
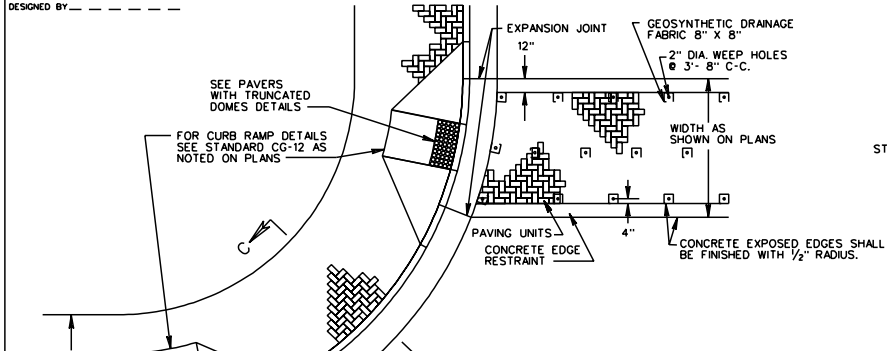


SURVEYED BY _____
 SUPERVISED BY _____
 DESIGNED BY _____

DESIGN FEATURES RELATING TO CONSTRUCTION OR TO REGULATION AND CONTROL OF TRAFFIC MAY BE SUBJECT TO CHANGE AS DEEMED NECESSARY BY THE DEPARTMENT

| NO. | DATE | REVISION | BY | CHKD. | APP'D. |
|-----|------|----------|----|-------|--------|
| | | | | | |



NOTES:

- COLOR OF PAVING UNITS SHALL MATCH THE COLOR DESCRIPTION INDICATED ON THE PLANS. A SAMPLE OF THE PAVING UNITS TO BE USED SHALL BE SUBMITTED AND THE FINAL COLOR SELECTION SHALL BE APPROVED BY THE ENGINEER.
- EXISTING PAVEMENT TO BE REMOVED WILL BE REMOVED BY SAW CUTTING AND EXCAVATING AS NECESSARY FOR THE PLACEMENT OF THE BASE MATERIAL, AND WILL BE REPLACED BY NEW MATERIAL AS DIRECTED BY THE ENGINEER.
- JOINTS (EXCEPT FOR EXPANSION-JOINTS) BETWEEN PAVING UNITS SHALL BE HAND TIGHT, SAND SWEPT, AND A MAXIMUM OF 1/4" WIDE FOR CONCRETE AND FOR BRICK.
- EXPANSION JOINTS SHALL BE PARALLEL TO THE STREET CENTERLINE AND LOCATED ALONG THE EDGE OF A TRAFFIC LANE NEAR THE STREET CENTERLINE WHEN POSSIBLE.
- CONSTRUCTION JOINTS SHALL FOLLOW THE EDGE OF TRAFFIC LANES.
- PAVING WORK WILL BE PLUMB AND TRUE TO LINE AND GRADE AND SHALL BE INSTALLED TO PROPERLY CONCORD WITH ADJACENT WORK AND ELEVATIONS. THE CUTTING OF THE PAVERS SHALL BE CLEAN WITH NO APPARENT SPALLS OR BREAKS.
- CONSTRUCTION JOINTS IN THE HYDRAULIC CEMENT CONCRETE SHALL BE FORMED AROUND ALL APPURTENANCES SUCH AS MANHOLES AND WATER METERS THAT EXTEND INTO OR THROUGH THE CROSSWALK. THESE JOINTS SHALL BE FILLED WITH 1/2" JOINT FILLER AND SEALED WITH SILICONE JOINT SEALANT ACCORDING TO STANDARD PR-2.
- PATTERN FOR PAVING UNITS SHALL BE A HERRINGBONE PATTERN WITH 90° ANGLES TO THE CONCRETE EDGE RESTRAINT OR LONGITUDINAL EDGE UNLESS OTHERWISE NOTED ON THE PLANS.
- PAVING UNITS SHALL BE PLACED AND VIBRATED ACCORDING TO MANUFACTURER'S RECOMMENDATIONS.
- HIGH WATER TABLE, WET SOILS OR POOR SOILS MAY REQUIRE ADDITIONAL DRAINAGE AS SHOWN ON PLANS OR DIRECTED BY THE ENGINEER.

*STEEL EDGING MAY BE DELETED WHERE SIDEWALK IS DIRECTLY ADJACENT TO PAVEMENT, CURB, ETC.; 1/2" JOINT FILLER AND SILICONE SEALANT REQUIRED WHEN ADJACENT TO BUILDING, WALL OR AS DIRECTED BY THE ENGINEER.

** OPTIONAL TREATMENT MAY CONSIST OF A MINIMUM THICKNESS OF 8" OF ASPHALT CONCRETE WITH:

- 6" ASPHALT CONCRETE BASE COURSE, TYPE BM-25.0, PLACED IN TWO LIFTS.
- 2" ASPHALT CONCRETE INTERMEDIATE COURSE, TYPE IM-19.0D.

FOR THIS OPTION, ADEQUATE DRAINAGE AND TOTAL THICKNESS TO SUPPORT TRUCK TRAFFIC MUST BE APPROVED BY THE ENGINEER.

SOLID PAVING UNITS (SIDEWALK & CROSSWALK)

REV. 7/04
 SPECIAL DESIGN SECTION
 DRAWING NO. A-97

| NO. | DATE | REVISION | BY | CHKD. | APP'D. |
|-----|------|----------|----|-------|--------|
| | | | | | |