

SURVEYED BY _____
 SUPERVISED BY _____
 DESIGNED BY _____

MB-12A, B, C

NOTES:

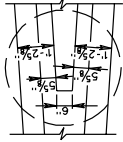
IF THE CONTRACTOR ELECTS TO USE THE OPTIONAL CONSTRUCTION JOINTS, TRANSVERSE JOINTS FOR CRACK CONTROL AND EXPANSION SHALL BE PROVIDED AT THE SAME LOCATION. TRANSVERSE JOINTS ARE TO CONSPICUOUS WITH JOINTS IN ADJACENT PAVEMENT WITH A MAXIMUM SPACING OF 20 FT. C-C.

CONCRETE MEDIAN BARRIER MAY BE CAST IN PLACE OR SLIP-FORMED. HORIZONTAL REINFORCING STEEL BARS ARE TO BE SEPARATE AT ALL EXPANSION AND CONTRACTION JOINTS. A 2" CONCRETE COVER IS REQUIRED OVER THE ENDS OF THE REINFORCING STEEL.

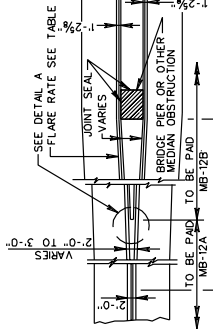
BARREL DELINEATOR SIZE, COLOR AND SPACING SHALL BE IN ACCORDANCE WITH THE PREVIOUS EDITION OF THE MANUAL WHICH SHALL BE INCLUDED IN THE PRICE BID FOR MEDIAN BARRIER. REFLECTIVE SURFACE OF BARRIER DELINEATOR, IN ALL INSTANCES, SHALL BE FACING THE ONCOMING TRAFFIC.

CONCRETE SHALL BE CLASS A3 IF CAST IN PLACE, 4000 PSI IF PRECAST.

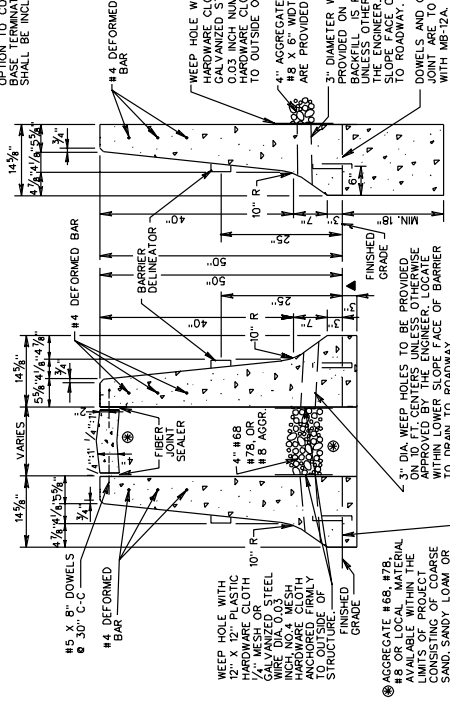
DEPTH OF CONCRETE BASE MAY BE EXTENDED AT THE CONTRACTOR'S OPTION TO CONCRETE WITH BOTTOM OF PAVEMENT COURSE IN WHICH BASE TERMINATES; HOWEVER, THE COST OF ADDITIONAL CONCRETE SHALL BE INCLUDED IN UNIT PRICE BID PER LINEAR FT. OF BARRIER.



DETAIL A



PLAN



MB-12C

MB-12B

DESIGN SPEED MPH	INSIDE SHY LINE		BEYOND SHY LINE	
	SHY L/S	FLARE RATE	SHY L/S	FLARE RATE
70	10'	30:1	20:1	*
60	8'	26:1	18:1	*
50	6.5'	21:1	14:1	*
40	5'	16:1	10:1	*
30	3.5'	13:1	8:1	*

* SUGGESTED MAXIMUM FLARE RATE FOR RIGID BARRIER SYSTEMS.

WEEP HOLES WITH 12" X 12" PLASTIC HARDWARE CLOTH 1/4" MESH OR 0.03 INCH NUMBER 4 MESH HARDWARE CLOTH ANCHORED FIRMLY TO OUTSIDE OF STRUCTURE.

4" AGGREGATE #68 #78 OR #8 X 6" WIDTH WHEN WEEP HOLES ARE PROVIDED THROUGH BARRIER.

3" DIAMETER WEEP HOLES TO BE PROVIDED ON 10' CENTERS WHEN BACKFILL IS PLACED BEHIND BARRIER, UNLESS OTHERWISE APPROVED BY OWNER.

SLOPE FACE OF BARRIER TO DRAIN TO ROADWAY.

DOWELS AND OPTIONAL CONSTRUCTION JOINT ARE TO BE IN ACCORDANCE WITH MB-12A.

SHEET 2 OF 2

SPECIFICATION REFERENCE	105
	502

CONCRETE MEDIAN BARRIER (TALL WALL)

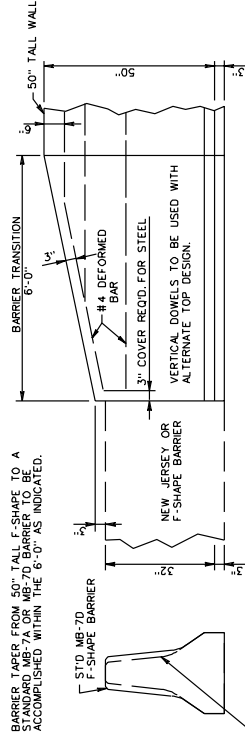
VIRGINIA DEPARTMENT OF TRANSPORTATION

REV. 1/04

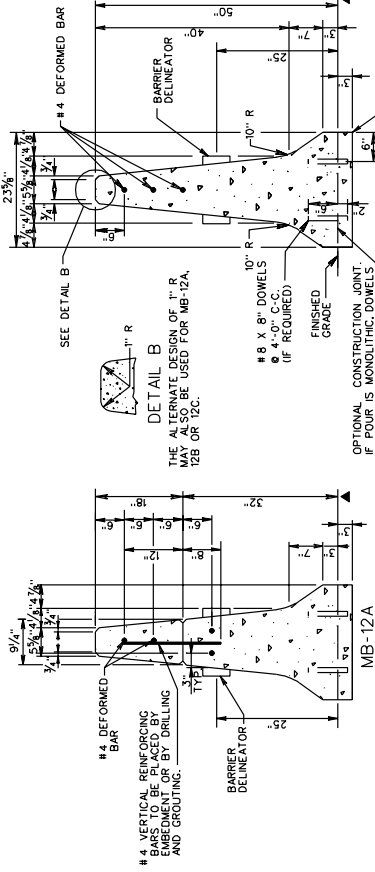
501.56

MB-12A, B, C

BARrier TAPER FROM 50" TALL F-SHAPE TO A STANDARD MB-7A OR MB-7D BARRIER TO BE ACCOMPLISHED WITHIN THE 6'-0" AS INDICATED.



TRANSITION FROM 50" TALL WALL TO 32" JERSEY OR F-SHAPE BARRIER



ALTERNATE TOP DESIGN

IF BARRIER EXTENSION IS CONSTRUCTED AS A SEPARATE ITEM ALL JOINTS ARE TO BE CONSTRUCTED AT THE SAME INTERVAL AS CONCRETE BARRIER. ALL VERTICAL BARS MAY BE PLACED IN THE CONCRETE OR BONDED INTO DRILLED HOLES IN HARDENED CONCRETE. WHEN HOLES ARE DRILLED NON-SHINK GROUT SHALL BE USED TO BOND THE BARS IN PLACE.

SHEET 1 OF 2

MB-12A

MB-12B

REV. 7/04

501.55

CONCRETE MEDIAN BARRIER (TALL WALL)

VIRGINIA DEPARTMENT OF TRANSPORTATION

REV. 7/04

502

DESIGN FEATURES RELATING TO CONSTRUCTION OR TO REGULATION AND CONTROL OF TRAFFIC MAY BE SUBJECT TO CHANGE AS DEEMED NECESSARY BY THE DEPARTMENT

REVISED	STATE	FEDERAL AID	ROUTE	STATE	SHEET NO.
	PROJECT	PROJECT		PROJECT	
	VA.				

REV. 7/04
 SPECIAL DESIGN SECTION
 DRAWING NO. A-96

PLAN NO.	PROJECT	FILE NO.	SHEET NO.
			105
			502