

#DGN#
#DGNLE#

SURVEYED BY _____
SUPERVISED BY AAA
DESIGNED BY BBB

#REF00
#LEV00

#REF02
#LEV02

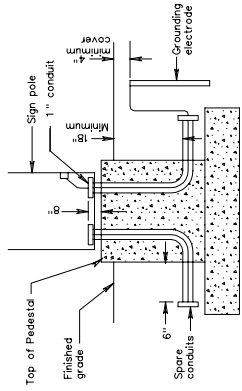
#REF03
#LEV03

#REF04
#LEV04

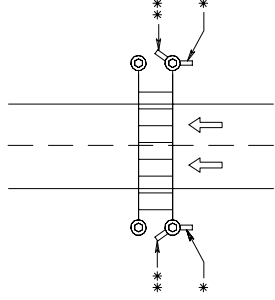
#REF05
#LEV05

#REF06
#LEV06

TYPICAL SIGN FOOTING DETAIL WITH CONDUIT



LOCATION OF FUTURE USE CONDUITS FOR DOUBLE END POLE STRUCTURES



NOTES:

The type, size, number and orientation of conduits entering and exiting footings may vary per sign location.

In addition to the conduits specified on the plans, one 1" conduit shall be provided for future use. Future use conduits shall be stubbed out and capped. Future use conduits shall be oriented to run parallel to the roadway. For location of future use conduits in foundations for double end pole structures, see drawing at right.

Each foundation shall be permanently marked to indicate alldises from the pedestal. The marking shall be made by cutting a 2" x 2" x 1/2" mark into the concrete and shall be 1/4" deep and 4" to 6" long. Locations of empty conduits shall have an additional 2" long mark made perpendicular to and centered on this mark.

Foundations above finished grade shall be chamfered 3/4" on all edges.

Grounding bushings shall be installed on each end of metal conduits.

Bel ends shall be installed on each end of PVC conduits.

Bel ends & bushings of empty conduits shall be plugged to prevent moisture and rodent entry.

Voids remaining after conductors exit or enter bell ends or bushings of conduits shall be sealed with silicone to prevent moisture and rodent entry.

No mortar, grout, or concrete shall be placed between bottom of base plate and top of pedestal.

* Future use conduits placed parallel to the roadway.

** Future use conduits placed at an angle to miss the pedestal. All conduit entry points in a spread footing foundation.

The maximum space between the bottom of the base plate and the top of the pedestal shall be no greater than the diameter of the anchor bolt plus one inch.

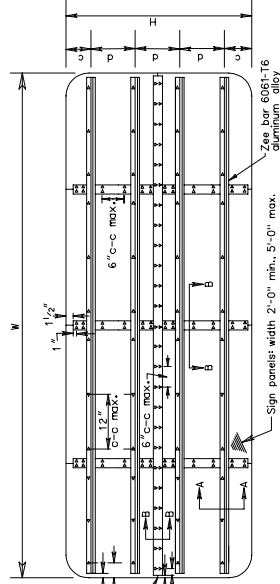
Overhead sign structures including "butterfly" structures shall have a minimum of 3" of air anchor bolts, each having a minimum diameter of 1/2".

TYPICAL DETAILS FOR OVERHEAD SIGN STRUCTURES

VIRGINIA DEPARTMENT OF TRANSPORTATION

REV. 7/05
REV. 4/04
130176

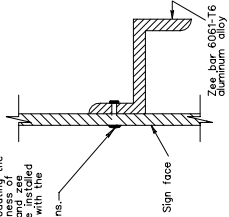
SPD-1



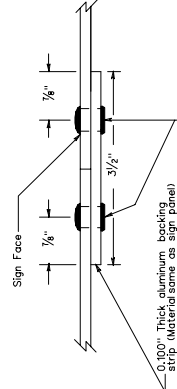
Signs having a height of 10 feet or less shall have one horizontal joint. Signs having a height of more than 10 feet shall have two joints. All joints shall be between lines of message.

SECTION A-A
ALL INSTALLATIONS EXCEPT TOP AND BOTTOM ZEE BARS ON OVERHEAD SIGNS

3/4\"/>



SECTION B-B



Rivet (Same as used for connecting sign to zee bar), in lieu of using rivets, sign equal to 3M's Vitec Double Coated Acrylic horizontal backing strip. Tape shall be installed in accordance with the manufacturer's recommendations.

DESIGN FEATURES RELATING TO CONSTRUCTION OR TO REGULATION AND CONTROL OF TRAFFIC MAY BE SUBJECT TO CHANGE AS DEEMED NECESSARY BY THE DEPARTMENT

REVISION	STATE	FEDERAL AID	ROUTE	STATE	SHEET NO.
		PROJECT		PROJECT	
	VA.				

SIGN PANEL DESIGN

VIRGINIA DEPARTMENT OF TRANSPORTATION

REV. 2/06
REV. 7/05
130179

REV. 2/06
SPECIAL DESIGN SECTION
DRAWING NO. A - 157

PLAN NO.	PROJECT	FILE NO.	SHEET NO.