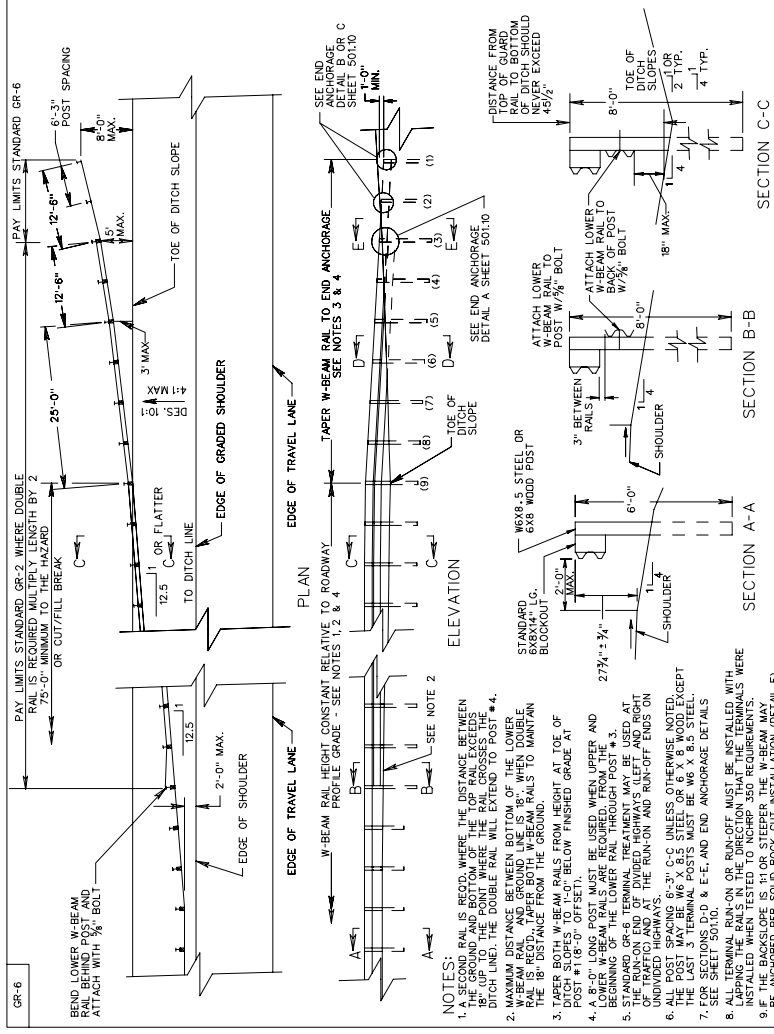


SURVEYED BY _____
SUPERVISED BY _____
DESIGNED BY _____

DESIGN FEATURES RELATING TO CONSTRUCTION OR TO REGULATION AND CONTROL OF TRAFFIC MAY BE SUBJECT TO CHANGE AS DEEMED NECESSARY BY THE DEPARTMENT

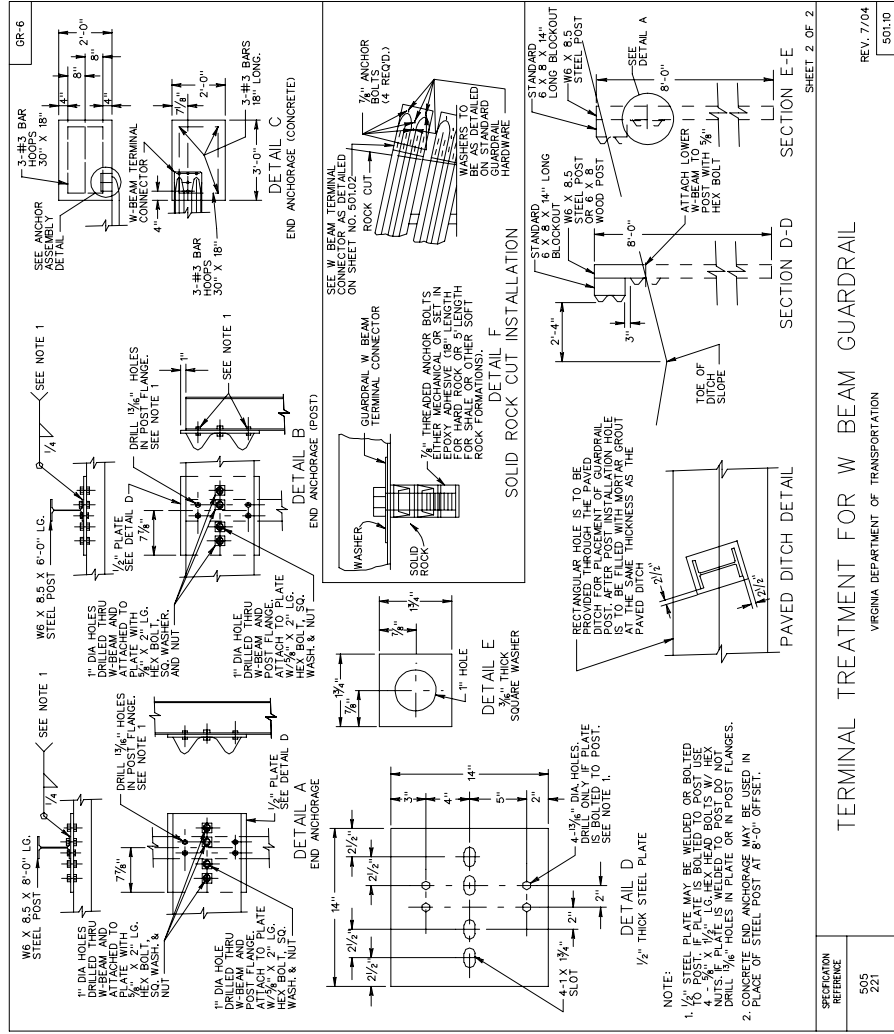
REVISED	STATE	FEDERAL AID PROJECT	ROUTE	STATE PROJECT	SHEET NO.
	VA				



- NOTES:
1. A SECOND RAIL IS REQ'D. WHERE THE DISTANCE BETWEEN 18" UP TO THE POINT WHERE THE RAIL CROSSES THE DITCH LINE) THE DOUBLE RAIL WILL EXTEND TO POST #4.
 2. MAXIMUM DISTANCE BETWEEN BOTTOM OF THE LOWER RAIL IS REQ'D. TAPER BOTH W-BEAM RAILS TO MAINTAIN THE 18" DISTANCE FROM THE GROUND.
 3. TAPER BOTH W-BEAM RAILS FROM LEIGH TOE OF POST #1 TO 18" OFF-SET.
 4. A 8'-0" LONG POST MUST BE USED WHEN UPPER AND BEGINNING OF THE LOWER RAIL THROUGH POST #3.
 5. STANDARD GR-6 TERMINAL TREATMENT MAY BE USED AT POINT OF TRAFFIC AND AT THE RUN-OFF AND RUN-ON UNDIVIDED HIGHWAYS.
 6. ALL POST SPACING 6'-3" TO 6'-6" UNLESS OTHERWISE NOTED. THE LAST 4 TERMINAL POSTS MUST BE W6 X 8.5 STEEL.
 7. FOR SECTIONS D-D & E-E, AND END ANCHORAGE DETAILS SEE SHEET 501.10.
 8. LAPPING THE RAILS IN THE RUN-OFF MUST BE INSTALLED WITH INSTALLED WHEN TESTED TO NCHRP 350 REQUIREMENTS.
 9. ALL UPPER AND LOWER W-BEAM RAILS MUST BE ANCHORED PER SOLID ROCK CUT INSTALLATION (DETAIL F).

SHEET 1 OF 2

TERMINAL TREATMENT FOR W BEAM GUARDRAIL	SPECIFICATION REFERENCE
VIRGINIA DEPARTMENT OF TRANSPORTATION	505 221



- NOTE:
1. 1/2" THICK STEEL PLATE MAY BE WELDED OR BOLTED TO POST. IF PLATE IS BOLTED TO POST USE 1/2" DIA HOLES IN PLATE. PLATE IS WELDED TO POST AND DRILL 1/16" HOLES IN PLATE OR IN POST FLANGES.
 2. CONCRETE END ANCHORAGE MAY BE USED IN PLACE OF STEEL POST AT 8'-0" OFF-SET.

REV. 2/06
SPECIAL DESIGN SECTION
DRAWING NO. A-132

TERMINAL TREATMENT FOR W BEAM GUARDRAIL	SPECIFICATION REFERENCE
VIRGINIA DEPARTMENT OF TRANSPORTATION	505 221

REV. 7/04
501.10

PLAN NO.	PROJECT	FILE NO.	SHEET NO.
----------	---------	----------	-----------