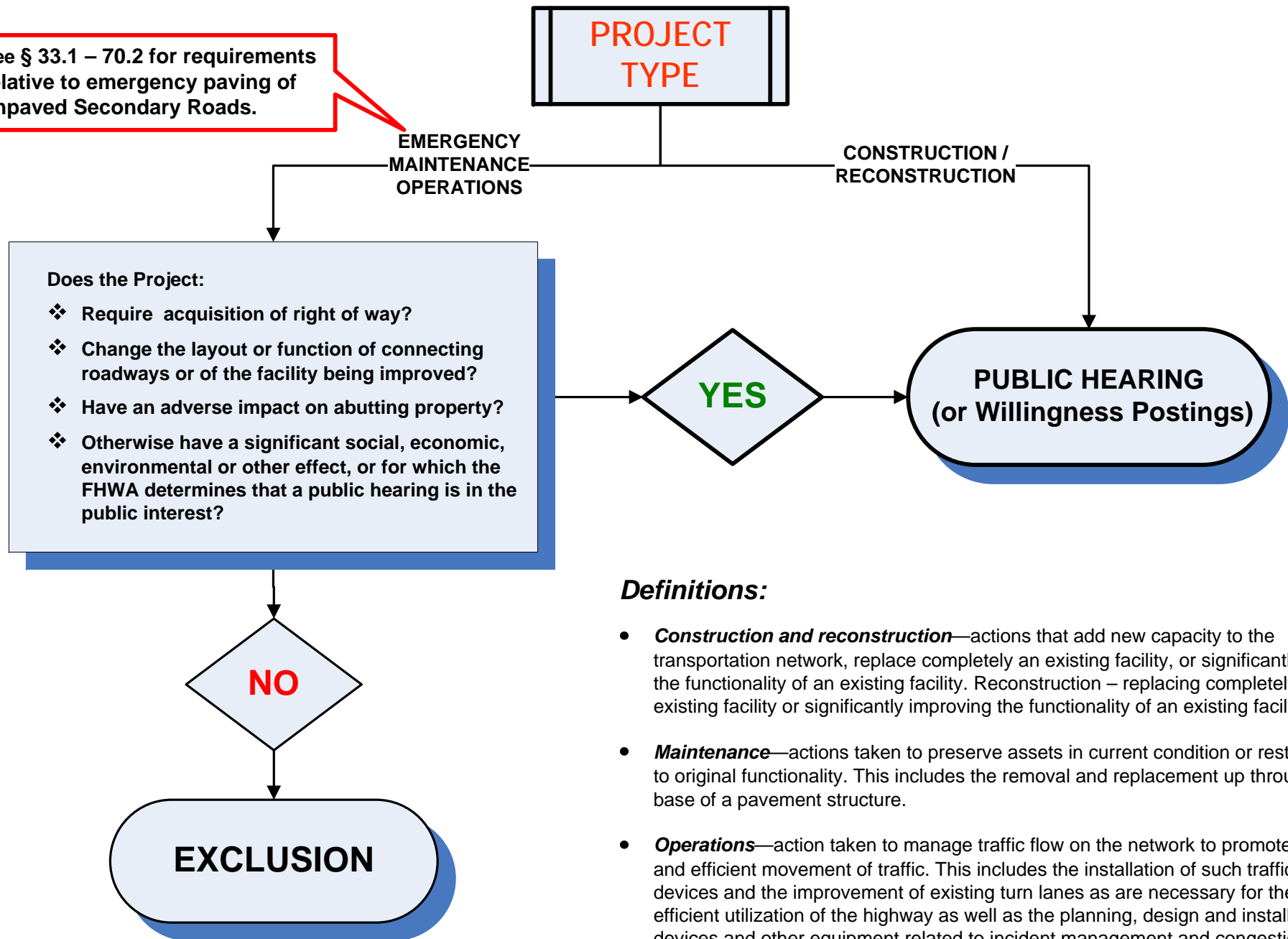


See § 33.1 – 70.2 for requirements relative to emergency paving of unpaved Secondary Roads.



**Definitions:**

- **Construction and reconstruction**—actions that add new capacity to the transportation network, replace completely an existing facility, or significantly improve the functionality of an existing facility. Reconstruction – replacing completely an existing facility or significantly improving the functionality of an existing facility.
- **Maintenance**—actions taken to preserve assets in current condition or restore them to original functionality. This includes the removal and replacement up through the base of a pavement structure.
- **Operations**—action taken to manage traffic flow on the network to promote the safe and efficient movement of traffic. This includes the installation of such traffic-control devices and the improvement of existing turn lanes as are necessary for the safe and efficient utilization of the highway as well as the planning, design and installation of devices and other equipment related to incident management and congestion management.