

# *Appendix C*

---

## *Typical Section Standards*

---

### ***TABLE OF CONTENTS***

<b>APPENDIX C</b> .....	<b>2</b>
<b>C.1 Typical Section Standards</b> .....	<b>2</b>
C.1.1 Metric and Imperial Sections.....	2
C.1.2 Standard Typical Cell Library Names .....	3
C.1.3 Standard Typical Cell names and Descriptions .....	3

# Appendix C

## C.1 Typical Section Standards

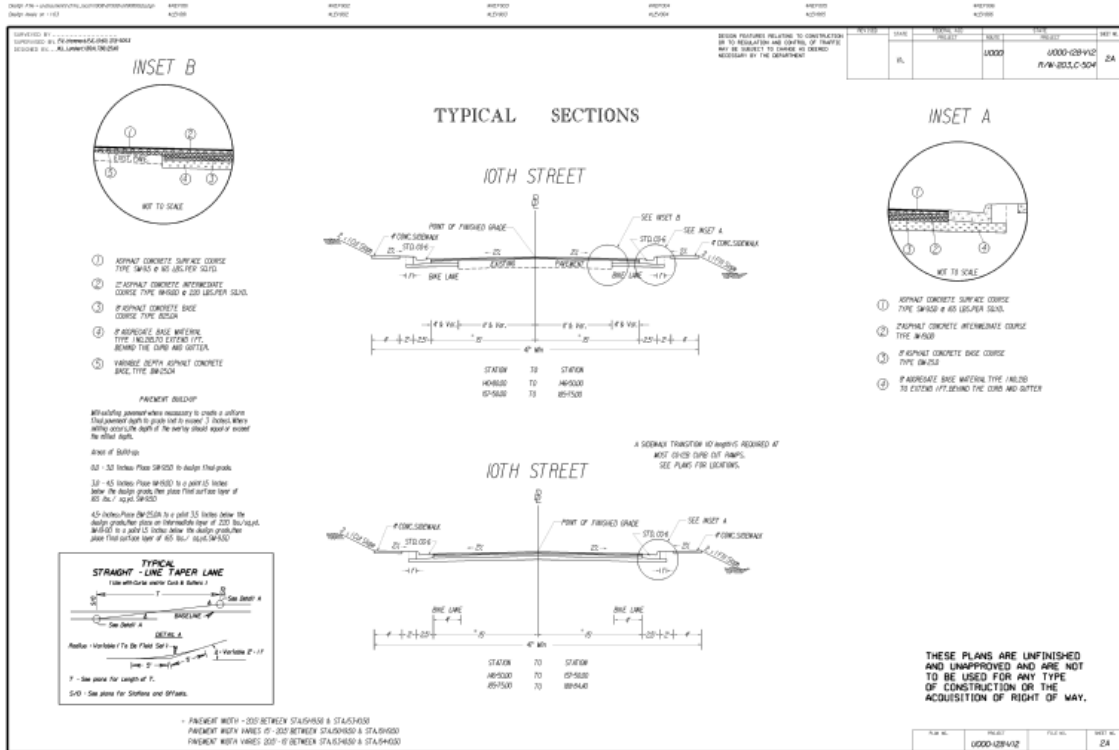
### C.1.1 Metric and Imperial Sections

This appendix contains the cells and standards for creating Typical Section sheets for a set of road plans. The cells and standards are depicted graphically in the appendix. The illustrations are graphical representations only and are not to scale. It is the responsibility of the operator to place cells in the files at the proper scale. This appendix represents the cells in both **stdtyp95.cel** and **msttyp95.cel**. The Master cell libraries are located in the Central Office under the following path:

- \\coapp52\proj\supv8\cells\design for English projects
- \\coapp52\proj\supv8\cells\mdesign for metric projects.

The metric equivalent measurements are shown in parenthesis.

NOTE: These cells are **not to be changed** without the permission of the Location and Design CADD Manager.



## C.1.2 Standard Typical Cell Library Names

stdtyp95.cel

msttyp95.cel

## C.1.3 Standard Typical Cell names and Descriptions

Cell Name	Cell Description	Cell Name	Cell Description
<a href="#">ABM</a>	Symbol for Aggregate Base Material	<a href="#">ABMN</a>	Label for Aggregate Base Material
<a href="#">ABMSCN</a>	Symbol for Aggregate Base Shoulder With Concrete Pavement	<a href="#">ABMSF</a>	Symbol for Aggregate Base Material for Shoulders
<a href="#">ABMSPS</a>	Symbol for Aggregate Base Material Under Paved Shoulders	<a href="#">BM3</a>	Symbol for Asphalt Concrete Type BM-3
<a href="#">BM3N</a>	Label for Asphalt Concrete Type BM-3	<a href="#">BM3SCP</a>	Symbol for Asphalt Shoulders Type BM-3
<a href="#">BU1</a>	Blow-up #1	<a href="#">BU2</a>	Blow-up #2
<a href="#">BU3</a>	Blow-up #3	<a href="#">BU4</a>	Blow-up #4
<a href="#">BU5</a>	Blow-up #5	<a href="#">CG2</a>	Standard Curb CG-2
<a href="#">CG3</a>	Standard Mountable Curb CG-3	<a href="#">CG6</a>	Standard Curb and Gutter CG-6
<a href="#">CG7</a>	Standard Mountable Curb and Gutter CG-7	<a href="#">CSABM</a>	Symbol for Cement Stabilized Aggregate Base
<a href="#">CSABMN</a>	Label for Cement Stabilized Aggregate Base	<a href="#">CSB30N</a>	Label for Cement Stabilized Select Borrow CBR-30
<a href="#">CSSABF</a>	Symbol for Cement Stabilized Shoulder, Aggregate Flexible Pavement	<a href="#">CSSABM</a>	Symbol for Cement Stabilized Shoulder, Aggregate Concrete Pavement

<b>Cell Name</b>	<b>Cell Description</b>	<b>Cell Name</b>	<b>Cell Description</b>
<a href="#">CSSEMT</a>	Symbol for Cement Stabilized Select Material Borrow	<a href="#">CSSMI2</a>	Symbol for Cement Stabilized Select Material M-12 Shoulder
<a href="#">CURNOT</a>	Note for Curing	<a href="#">HCSSN</a>	Label for Hydraulic Cement Stabilized Subbase
<a href="#">HSSTYP</a>	Typical Grade subsurface High side	<a href="#">IMIA</a>	Symbol for Asphalt Concrete Intermediate Course
<a href="#">IMIAN</a>	Label for Asphalt Concrete Type IM-1A	<a href="#">MB7A</a>	Standard Median Barrier Type MB-7A
<a href="#">MB7B</a>	Standard Median Barrier Type MB-7B	<a href="#">MB7C</a>	Standard Median Barrier Type MB-7C
<a href="#">MB7D</a>	Standard Median Barrier Type MB-7D	<a href="#">MB7E</a>	Standard Median Barrier Type MB-7E
<a href="#">MB7F</a>	Standard Median Barrier Type MB-7F	<a href="#">GR2</a>	Guardrail for Typical Sect.
<a href="#">MS1A</a>	Standard Concrete Median Type MS-1A	<a href="#">PDCF</a>	Pavement Design for Connection Flares
<a href="#">PCENTR</a>	Private and Commercial Entrances	<a href="#">TS1</a>	Rural Single Roadway Typical Section
<a href="#">PLA</a>	Base Plan Sheet for Typical Sections	<a href="#">PPCCPN</a>	Label for Portland Cement Concrete Pavement
<a href="#">PRINOT</a>	Note for Prime	<a href="#">RPCCPN</a>	Label for Reinforced Concrete Pavement
<a href="#">SELMAT</a>	Label for Select Material or Borrow	<a href="#">SM30N</a>	Label for Select Material Minimum CBR-30
<a href="#">SM2CN</a>	Label for Asphalt Concrete Pavement Type SM-2C	<a href="#">SB30N</a>	Label for Select Borrow Material Minimum CBR-30

<b>Cell Name</b>	<b>Cell Description</b>	<b>Cell Name</b>	<b>Cell Description</b>
<a href="#">SMI2S</a>	Symbol for Select Material Under I-2 Shoulder	<a href="#">SSPSN</a>	Label for Stabilized Shoulder with Prime and Seal
<a href="#">STOS</a>	Label for Station to Station	<a href="#">SWLT</a>	5' Sidewalk Left
<a href="#">SWRT</a>	5' Sidewalk Right	<a href="#">TERM</a>	Arrowhead Terminator
<a href="#">TS1</a>	Rural Single Lane	<a href="#">TS2</a>	Rural Divided Roadway Typical Section
<a href="#">TS3</a>	Widen Existing Pavement on One Side	<a href="#">TS4</a>	Urban Roadway-Flush or No Median
<a href="#">TS5</a>	Widen Existing Pavement Both Sides	<a href="#">TS6</a>	Ramp Typical Section
<a href="#">TS7</a>	Secondary Road Typical Section	<a href="#">TYPSEC</a>	Heading for Typical Section Sheet