

# Appendix A

---

## Sheet Cell Library

---

### TABLE OF CONTENTS

APPENDIX A .....	2
<b>A.1 Sheet Cell Library .....</b>	<b>2</b>
A.1.1 Accessing Sheet Cells .....	2
A.1.2 Base Plan Sheet .....	4
A.1.3 Sheet Cell Library Names .....	4
<b>A.2 New and Revised Standard Sheet Cells .....</b>	<b>5</b>
A.2.1 Revisions.....	5
A.2.2 Revised Sheet Cells.....	5
A.2.3 New Signing Cells.....	6
<b>A.2.3.1 Added Cells for PPTA projects .....</b>	<b>6</b>
A.2.4 Insertable Sheets converted to Cells .....	7
A.2.5 Base Sheet Cells.....	7
<b>A.2.5.1 Designated “old” Cells.....</b>	<b>8</b>
<b>A.2.5.2 New Plan notes Cells.....</b>	<b>8</b>
<b>A.3 Sheet 2000.cel-Cell Names and Descriptions .....</b>	<b>9</b>

# Appendix A

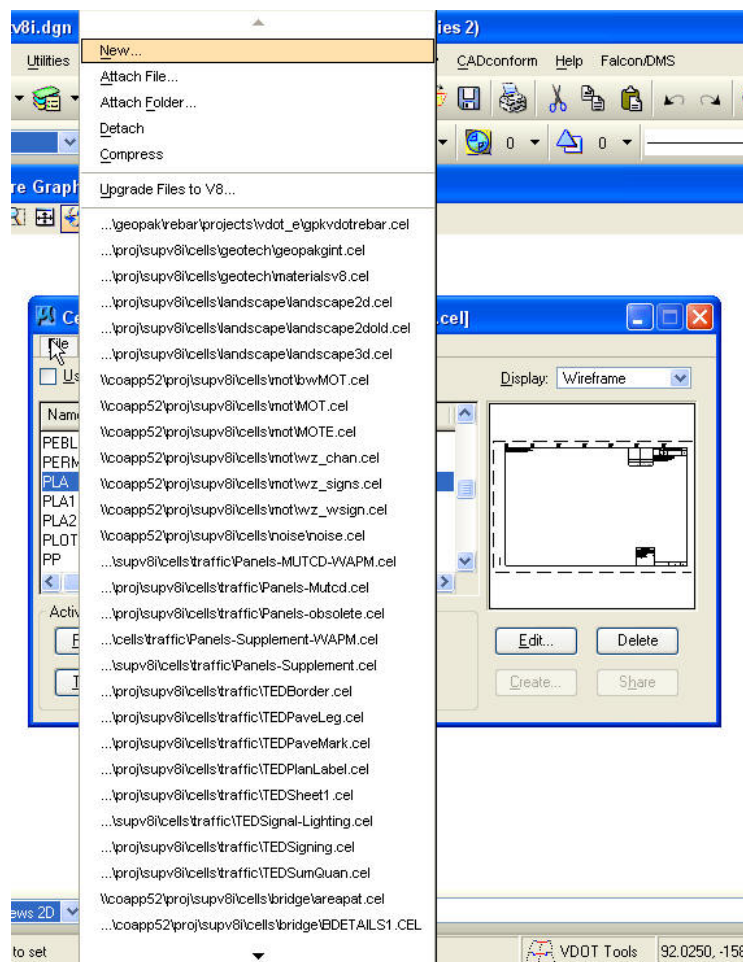
## A.1 Sheet Cell Library

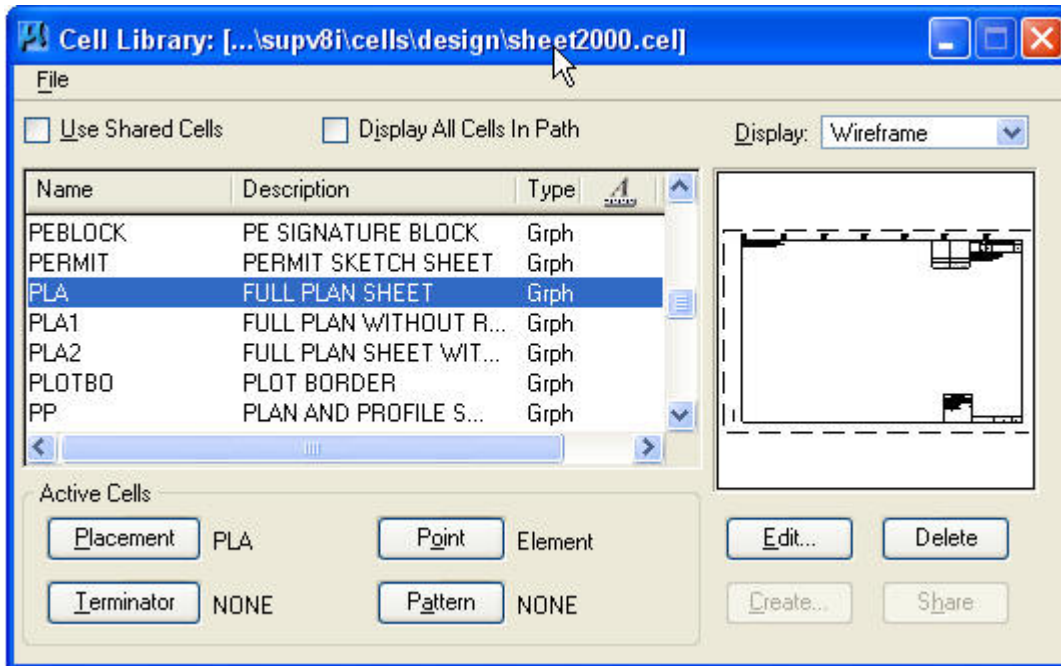
### A.1.1 Accessing Sheet Cells

This Appendix contains graphic examples of all cells stored in the Sheet2000, and Msheet95 cell libraries. These libraries consist of all base sheets, limited access stamps, plan assembly notes and some symbols. Some of these cells will be duplicated in other libraries for convenience.

The Master cell libraries are located in the Central Office under the following path:

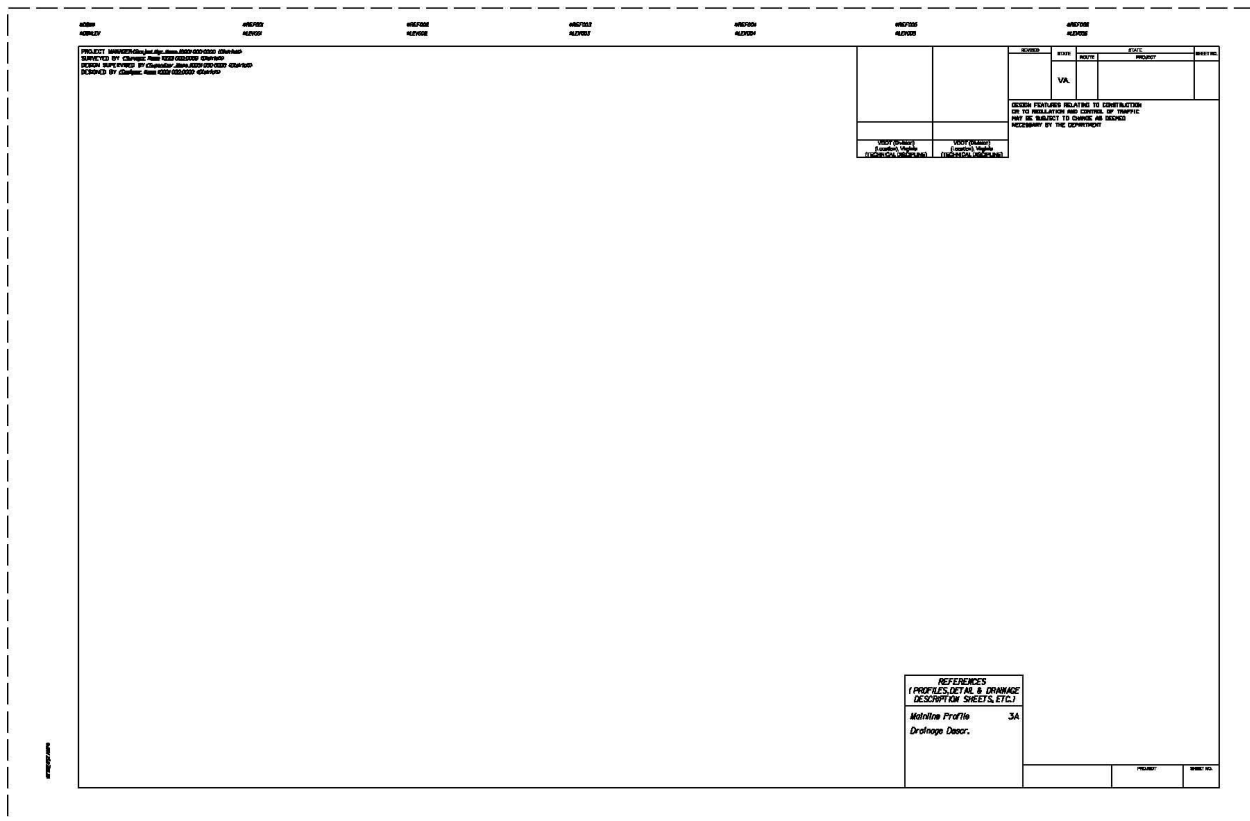
- <\\coapp52\proj\supv8\cells\design> for English projects
- <\\coapp52\proj\geopakv8\road\mcel> for metric projects





NOTE: These cells are ***not to be changed*** without permission from the Location and Design CADD Manager.

### PLA Full Plan Sheet Cell



# TITLE Title Sheet Cell

FOR INDEX OF SHEETS SEE SHEET 1B

THIS PROJECT WAS DEVELOPED UTILIZING THE DEPARTMENT'S ENGINEERING DESIGN PACKAGE (EDP), SECOND Computer Identification No. SEC20000001.

**COMMONWEALTH OF VIRGINIA**  
**DEPARTMENT OF TRANSPORTATION**

## PLAN AND PROFILE OF PROPOSED STATE HIGHWAY

STATE FEDERAL AID STATE  
VA 00 0000 - 000 - 000 /  
SEE CONSTRUCTION BOOK FOR SECTION NUMBER

FUNCTIONAL CLASSIFICATION AND TRAFFIC DATA

ADT	FM
ADT	TP
Day	
D (D design hour)	
F (D design hour)	
V (ADT)	

CONVENTIONAL SIGNS

PROJECT MANAGER: [Name] DATE: [Date]  
DESIGN: [Name] DATE: [Date]  
DESIGNED BY: [Name] DATE: [Date]

THE COMPLETE ELECTRONIC AND PAPER SET OF THE PLANS ASSEMBLY AS SHOWN, INCLUDING ALL SUBSEQUENT REVISIONS, WILL BE THE OFFICIAL DISTRIBUTION BASIS FOR INFORMATION RELATIVE TO ELECTRONIC FILES AND LAYERED PLANS. SEE THE GENERAL NOTES, DESIGN FEATURES RELATED TO CONSTRUCTION OR TO REGULATION AND CONTROL OF TRAFFIC MAY BE SUBJECT TO CHANGE AS DEMAND NECESSARY BY THE DEPARTMENT.

THIS PROJECT IS TO BE CONSTRUCTED IN ACCORDANCE WITH THE DEPARTMENT'S POST ROAD AND BRIDGE SPECIFICATIONS, 2008 EDITION AND BRIDGE STANDARDS, 2008 EDITION, AND AS AMENDED BY CONTRACT ORDINANCES AND THE COMPLETE ELECTRONIC FILE VERSION OF THE PLANS ASSEMBLY.

ALL CURVES ARE TO BE SUPERELEVATED, TRANSFORMED AND WIDENED IN ACCORDANCE WITH STANDARD [Number] EXCEPT WHERE OTHERWISE NOTED.

THE ENGINE APPROVED THIS SHEET, INCLUDING SIGNING AND SEALING, AND ISSUED BY THE DISTRICT OFFICE AS A LEGAL AND ENFORCED TO THE FULL EXTENT OF THE LAW.

Population \_\_\_\_\_ (\_\_\_\_\_ Census)

STATE PROJECT NO.	SECTION	SECTION OR PROJECT NO.	TYPE	SIC NO.	EQUALS		LENGTHS INCLUDING BRIDGES		LENGTHS EXCLUDING BRIDGES		SHEET NUMBER	SHEET TOTAL	DESCRIPTION
					FEET	FEET	FEET	FEET					

Project Lengths are based on \_\_\_\_\_

SCALE

RECOMMENDED FOR APPROVAL FOR RIGHT OF WAY ACQUISITION

APPROVED FOR RIGHT OF WAY ACQUISITION

RECOMMENDED FOR APPROVAL FOR CONSTRUCTION

APPROVED FOR CONSTRUCTION

APPROVED

Copyright © 2000, Commonwealth of Virginia

## A.1.2 Base Plan Sheet

The latest base plan sheet is to be used on ALL IMPERIAL PROJECTS.

- This latest format reduces the sheet coverage, but makes it possible to print true half-size reproductions on a standard copier (11" x 17").
- Station coverage will typically be 700'/25 scale, 1400'/50 scale, 2800'/100 scale.
- Base Plan Sheets are available in the CADD Sheet Cell Library, *sheet2000.cel*.

## A.1.3 Sheet Cell Library Names

sheet2000.cel  
msheet95.cel

---

## **A.2 New and Revised Standard Sheet Cells**

---

### **A.2.1 Revisions**

A number of standard sheet cells have been revised to remove unnecessary fields, add PE signature blocks and utilize the nesting function for ease of editing. Please note the following changes:

- Federal Project number blocks in the upper right have been removed from all sheets except the Title sheet.
- Plan No. and File No. blocks have been eliminated from the bottom right of all sheet cells as they are no longer used.
- A block has been provided to the right of the lower project number for the scale bar.
- Also, the cell status may now be dropped one time on nested cells, while the sheet elements remain intact as a separate cell. This allows relocation of various elements as needed.
- MicroStation allows the editing of text within cells, without dropping cell status.

### **A.2.2 Revised Sheet Cells**

These sheet cells have additional revisions as noted:

- PLA – standard plan sheet cell now includes 2 PE signature blocks.
- PLA1 – same as PLA without Reference block.
- PP – standard plan & profile sheet cell now includes 2 PE signature blocks.
- PRO – standard profile sheet cell now includes 1 PE signature block.
- REVDATA – standard revision data sheet now includes state & federal project number text at the upper left.
- TIER\_1\_TITLE – Title sheet for Tier 1 Projects.
- TIER\_1\_TITLE\_LAP\_FED – Title sheet for Tier 1, locally administrated Federally Funded Projects.
- TIER\_2\_TITLE – Title sheet for Tier 2 Projects.
- TIER\_2\_TITLE\_LAP\_FED – Title sheet for Tier 2, locally administrated Federally Funded Projects.

- TITLE\_LAP\_STA – Title sheet for locally administrated State Funded Projects.
- TITLEPPTA – REMOVED/DELETED.
- TITLEPPTACON - Title sheet for Design-Build PPTA projects for construction now includes a column for bridge plan number in the tabulation block and a signature block for the (Design-Build Firm) Design Manager under the *Recommended for Approval for Construction block*. Also added 'VDOT' to District Construction Engineer in the same signature block.
- TITLEPTARW - Title sheet for PPTA ROW projects now includes a column for bridge plan number in the tabulation block and a signature block for the (Design-Build Firm) Design Manager under the *Recommended for Approval for Right of Way Acquisition block*. Also added 'VDOT' to District Construction Engineer in the same signature block.
- XSECT – standard cross section sheet now includes replacement text for the Project Manager, Designer, Supervisor and Surveyor names – WWW, XXX, YYY, ZZZ.
- XSECT4 – standard cross section sheet now includes replacement text for the Project Manager, Designer, Supervisor and Surveyor names – WWW, XXX, YYY, ZZZ.
- XSECT5 – standard cross section sheet now includes replacement text for the Project Manager, Designer, Supervisor and Surveyor names – WWW, XXX, YYY, ZZZ.

### A.2.3 New Signing Cells

An additional cell is available for use on existing projects which will require PE signatures or on new projects requiring additional signatures beyond those blocks provided. There is also a cell for Consultant signatures for use on PPTA projects.

- PEBLOCK – VDOT PE signature block.

#### A.2.3.1 Added Cells for PPTA projects

- TITLEPPTAAB – Title Sheet for Design-Build PPTA “As Built” projects, replaces cell TITLEPPTA.
- TITLERFQ\_RFP – Title Sheet for Design-Build PPTA RFQ or RFP projects.
- DGNFEAT - Design Features Note cell.

## A.2.4 Insertable Sheets converted to Cells

The following cells have been revised to remove the Base Plan Sheet nested cell. These cells have also been removed from Falcon under eng-ser and are no longer in Falcon:

- 86CADDLEV - 86 CADD Level Structure Sheet
- 95CADDLEV - 95 CADD Level Structure Sheet
- ECSUM - Erosion Control Summary Sheet
- GRADSUM - Grading Diagram Sheet
- HYDRODATA – Hydrologic Data Sheet
- INDEX – Plan Sheet Index
- PRELRWDATA – Preliminary ROW Data Sheet
- RDSDDDEV - Roadside Development Sheet
- RO\_RCADATA - Radial Offset/Reverse Curb Data
- SWPPP1 - Stormwater Pollution Prevention Plan Information (1 of 3)
- SWPPP2 - Stormwater Pollution Prevention Plan Information (2 of 3)
- SWPPP3 - Stormwater Pollution Prevention Plan Information (3 of 3)
- TESTHOLE - Underground Utility Test Hole Information
- WLSUM - Wetland Comp. Plan List, Summary and Notes

## A.2.5 Base Sheet Cells

The revised cell library will also include cells used to create the ‘nested’ standard cells. These cells are not to be used in plan design as they are incomplete.

- BASEPLA
- BASEPP
- BASETITLE
- BASETITLETIER1
- BASETITLETIER2

- BASEPPTA
- BASEPPTACON
- BASEPPTARW
- BASETITLERFP

#### A.2.5.1 Designated “old” Cells

The cells listed below are designated as “old” and reflect the existing cells prior to the release of the latest revisions to the cell library and the cells themselves.

- OLDPLA
- OLDPRO

#### A.2.5.2 New Plan notes Cells

New Plan Notes added to the dsymgeo cell library.

- FOA1125 – 25 scale Fixed Object Attachment GRFOA1 TY1
- FOA1150 – 50 scale Fixed Object Attachment GRFOA1 TY1
- FOA1225 – 25 scale Fixed Object Attachment GRFOA1 TY2
- FOA1250 – 50 scale Fixed Object Attachment GRFOA1 TY2
- FOA2125 – 25 scale Fixed Object Attachment GRFOA2 TY1
- FOA2150 – 50 scale Fixed Object Attachment GRFOA2 TY1
- FOA2225 – 25 scale Fixed Object Attachment GRFOA2 TY2
- FOA2250 – 50 scale Fixed Object Attachment GRFOA2 TY2
- FOA325 – 25 scale Fixed Object Attachment GRFOA3
- FOA350 – 50 scale Fixed Object Attachment GRFOA3
- [RFQPLANS](#) - plan stamp for RFQ plans
- [RFPPLANS](#) – plan stamp for RFP plans

**NOTE: The cell library shown below does not necessarily reflect all of the new and revised Sheet Cells.**



## **A.3 Sheet 2000.cel-Cell Names and Descriptions**

Cell Name	Cell Description	Cell Name	Cell Description
<a href="#">BRISTP</a>	Bristol District Title Label	<a href="#">BRISTT</a>	Bristol District Title Label
<a href="#">CII</a>	Critical Info Security NO	<a href="#">CITITL</a>	Critical Info note title sht.
<a href="#">City</a>	City Town of RW Construction	<a href="#">CONSUL</a>	Consultant Note
<a href="#">COMPLN</a>	Complete Plan Assembly Note	<a href="#">CONSTRUCTED</a>	Constructed in Accordance with Note
<a href="#">CULPEP</a>	Culpeper District Plan Label	<a href="#">CULPET</a>	Culpeper District Title Label
<a href="#">DGNFEAT</a>	Design Feature Note	<a href="#">ELECTR</a>	Complete Scanned File Note
<a href="#">ESCSUM</a>	Erosion & Sediment Control Summary	<a href="#">FREDP</a>	Fredericksburg District Plan Label
<a href="#">FREDT</a>	Fredericksburg District Title Label	<a href="#">GRADSUM</a>	Grading Diagram and Summary
<a href="#">HAMPTP</a>	Hampton Roads District Title Label	<a href="#">HAMPTT</a>	Hampton Roads District Plan Label
<a href="#">HYDRODATA</a>	Hydrologic Data Sheet	<a href="#">ICGRID</a>	Continuous Profile Grid (Imperial)
<a href="#">INDEX</a>	Index of Sheets	<a href="#">LACITY</a>	Limited Access Stamp Any City
<a href="#">LACTB</a>	Limited Access Stamp Transportation Board	<a href="#">LASHC</a>	Limited Access Stamp
<a href="#">LCASignature</a>	Local/City admin. VDOT/FHWA Signature	<a href="#">LVLTXT</a>	Header Text for Reference File and Level Info

Cell Name	Cell Description	Cell Name	Cell Description
<a href="#">LYNCHP</a>	Lynchburg District Plan Label	<a href="#">LYNCHT</a>	Lynchburg District Title Label
<a href="#">MARKDE</a>	Turn Lane Marking Detail	<a href="#">NA</a>	North Arrow
<a href="#">NOVAP</a>	NOVA District Plan Label	<a href="#">NOVAT</a>	NOVA District Title Label
<a href="#">OLDPLA</a>	Old Full Plan Sheet	<a href="#">OLDPRO</a>	Old Full Profile Sheet
<a href="#">PEBLOCK</a>	PE Signature Block	<a href="#">PERMIT</a>	Permit Sketch Sheet
<a href="#">PLA</a>	Full Plan Sheet	<a href="#">PLA1</a>	Full Plan Sheet w/o Ref Box
<a href="#">PLA2</a>	Full Plan Sheet w/o Seals	<a href="#">PLOTBO</a>	Plot Border (For batch plotting)
<a href="#">PP</a>	Plan and Profile Sheet	<a href="#">PRELRWDATA</a>	Preliminary R/W data Sheet
<a href="#">PRO</a>	Full Size Profile Sheet	<a href="#">RDSDEVE</a>	Roadside Development Sheet
<a href="#">REVDATA</a>	Revision Data Sheet	<a href="#">RICHMP</a>	Richmond District Plan Label
<a href="#">RICHMT</a>	Richmond District Title Label	<a href="#">RO_RCDATA</a>	Radial Offset/Reverse curve Data
<a href="#">SALEMP</a>	Salem District Plan Label	<a href="#">SALEMT</a>	Salem District Title Label
<a href="#">SBAR1</a>	Plan Scale Bar 1:100ft (Imperial) 1:1000m (Metric)	<a href="#">SBAR25</a>	Plan Scale Bar 1:25ft (Imperial) 1:250m (Metric)
<a href="#">SBAR50</a>	Plan Scale Bar 1:50ft (Imperial) 1:500m (Metric)	<a href="#">SSPROFILE</a>	Storm Sewer Profile Sheet

Cell Name	Cell Description	Cell Name	Cell Description
<a href="#">STAUNP</a>	Staunton District Plan Label	<a href="#">STAUNT</a>	Staunton District Title Label
<a href="#">STIMUL</a>	Title Sheet notes for Stimulus Projects	<a href="#">SWPPP1</a>	SW Pollution Prevention Plan 1 of 3
<a href="#">SWPPP2</a>	SW Pollution Prevention Plan 2 of 3	<a href="#">SWPPP3</a>	SW Pollution Prevention Plan 3 of 3
<a href="#">TEMP</a>	Used for temporary cell	<a href="#">TESTHOLE</a>	Underground Utility Test Hole information
<a href="#">TIER1CONST</a>	Tier 1 Construction Signature Block	<a href="#">TIER1RW</a>	Tier 1 RW Acquisition Signature Block
<a href="#">TIER1RWPART</a>	Tier 1 RW Partial Signature Block	<a href="#">TIER1RWTOTAL</a>	Tier 1 RW Total Signature Block
<a href="#">TIER2CONST</a>	Tier 2 Construction Signature Block	<a href="#">TIER2RW</a>	Tier 2 RW Signature Block
<a href="#">TIER 1 TITLE</a>	Tier 1 Title sheet	<a href="#">TIER 1 TITLE LAP FED</a>	Tier 1 Locally Administrated Title Sheet for Federal Funded Projects.
<a href="#">TIER 2 TITLE</a>	Tier 2 Title sheet	<a href="#">TIER 2 TITLE LAP FED</a>	Tier 2 Locally Administrated Title Sheet for Federal Funded Projects.
<a href="#">TITLE LAP STA</a>	Title sheet for locally administrated State Funded Projects	<a href="#">TITLEPPTAB</a>	Title Sheet for Design Build PPTA Project
<a href="#">TITLEPPTACON</a>	Design Build for Const	<a href="#">TITLEPPTARW</a>	Design Build for R/W
<a href="#">TITLERFQ RFP</a>	Title Sheet for Design-Build PPTA RFQ or RFP projects	<a href="#">VDOT</a>	VDOT LOGO
<a href="#">VDOT05</a>	VDOT LOGO 2005	<a href="#">WLSUM</a>	Wetland Comp. Plant List, Summary and Notes

Cell Name	Cell Description	Cell Name	Cell Description
<a href="#">XSECT</a>	10 Scale cross section sheet	<a href="#">XSECT4</a>	40 Scale cross section sheet
<a href="#">XSECT5</a>	5 Scale cross section sheet		