

9/2/2014
9:48:07 AM

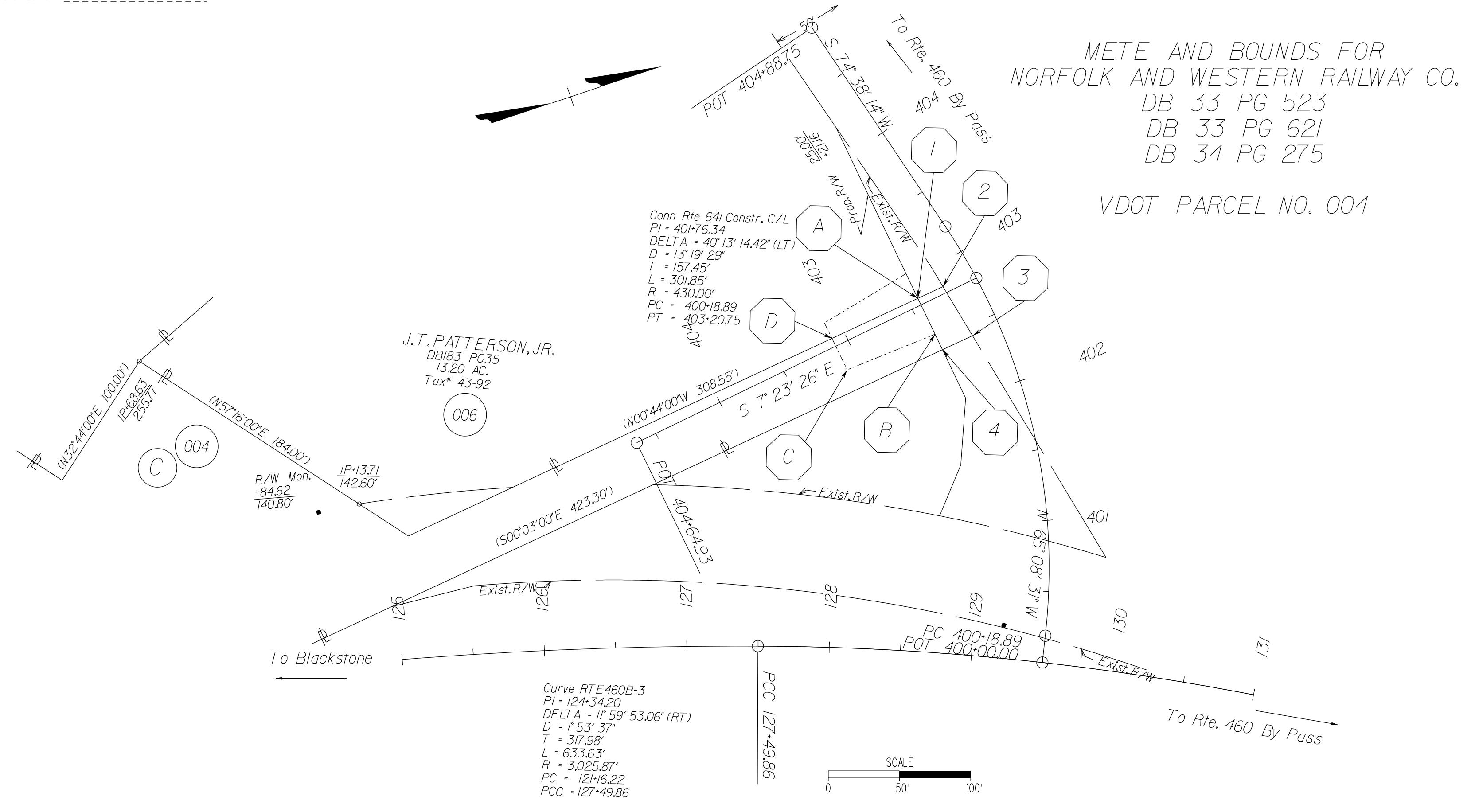
Metes and Bound Datadgn
Plotted By: StewartWillis

PROJECT MANAGER M. Tolson, P.E. (804) 524-6407 (Richmond District)
SURVEYED BY Steve Brarford, (804) 524-6157 (Richmond District)
DESIGN SUPERVISED BY A. Wilkerson, P.E. (804) 524-6150 (Richmond District)
DESIGNED BY Grant A. Cleveland (804) 524-6504 (Richmond District)

METES AND BOUNDS DATA

METE AND BOUNDS FOR
NORFOLK AND WESTERN RAILWAY CO.
DB 33 PG 523
DB 33 PG 621
DB 34 PG 275

VDOT PARCEL NO. 004



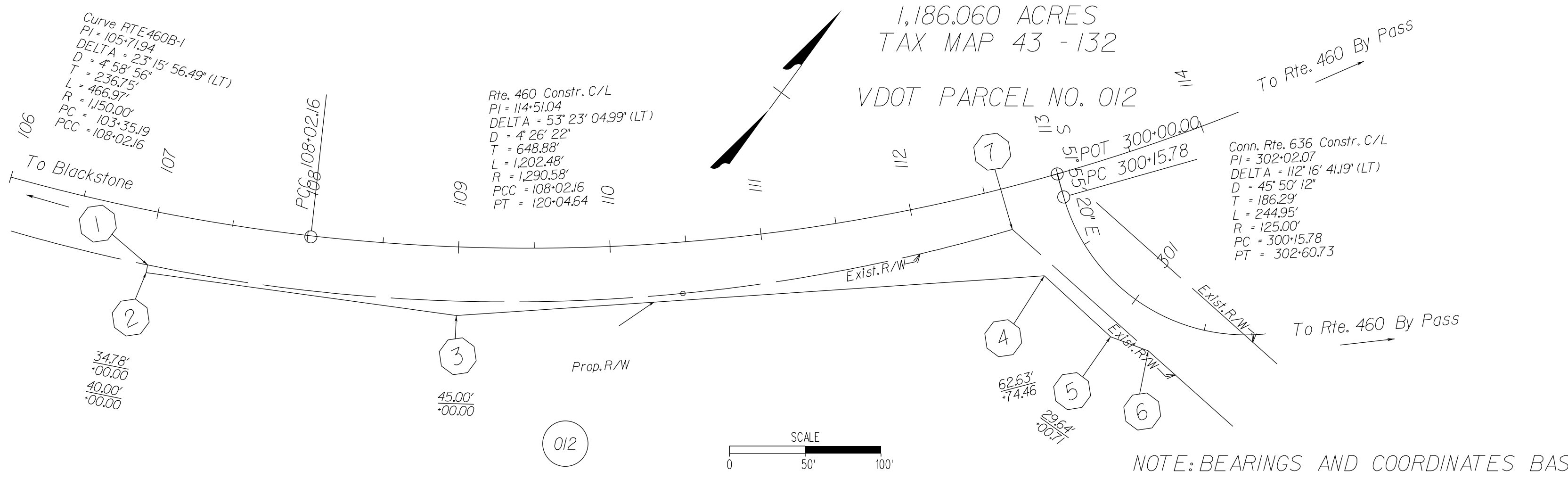
REVISED	STATE	ROUTE	STATE PROJECT	SHEET NO.
	VA.	XXX	XXXX-XXX-XXX, C50X R20X	2K
DESIGN FEATURES RELATING TO CONSTRUCTION OR TO REGULATION AND CONTROL OF TRAFFIC MAY BE SUBJECT TO CHANGE AS DEEMED NECESSARY BY THE DEPARTMENT				
VDOT (Division) or Co. Name (Location), Virginia (TECHNICAL DISCIPLINE)	VDOT (Division) or Co. Name (Location), Virginia (TECHNICAL DISCIPLINE)			

PARCEL 004		PARCEL 004							
PROJECT COORDINATES PROP. RIGHT OF WAY									
POINT 1	POINT 3	PROJECT COORDINATES TEMPORARY CONSTR. EASEMENT							
N 281,457.1270	N 281,437.7459	POINT A	POINT C						
E 3,437,845.7156	E 3,437,847.9292	N 281,457.1270	N 281,394.2016						
POINT 1 TO POINT 3	S63°05'W 19.507'	E 3,437,845.7156	E 3,437,877.5987						
		POINT A TO POINT C	S26°52'4"E 70.542'						
SECTION	LINE	BEARING	LENGTH	CORD LENGTH	DELTA	RADIUS	ARC LENGTH	SQ. FT.	ACRES
	1-2	N77°26'58"E	40.223'						
	2-3	S63°05'W	23.33'						
	3-4	S82°54'15"W	40.002'						
	4-1	N63°05'W	19.507'						
TOTAL ACRES OF PROPOSED RIGHT OF WAY								856.7600	0.0197
	A-B	N82°54'15"E	27.932'						
	B-C	S33°52'7"E	66.506'						
	C-D	S82°36'34"W	24.539'						
	D-A	N63°05'W	66.512'						
TOTAL ACRES OF TEMPORARY CONSTRUCTION EASEMENT								1743.0600	0.0400

POINT	PLUS	OFFSET
1	402-8511 CONN RTE 641	42.86' LT.
2	402-8459 CONN RTE 641	23.40' LT.
3	402-4236 CONN RTE 641	20.02' LT.
4	402-4164 CONN RTE 641	43.34' RT.
A	402-8611 CONN RTE 641	42.86' RT.
B	402-5507 CONN RTE 641	43.63' RT.
C	402-5977 CONN RTE 641	110.03' RT.
D	402-9269 CONN RTE 641	109.15' RT.

METE AND BOUNDS FOR
VIRGINIA POLYTECHNIC INSTITUTE
AND STATE UNIVERSITY
DB 352 PG 383
PB 6 PG 85 - 92
1,186.060 ACRES
TAX MAP 43 - 132

VDOT PARCEL NO. 012



PARCEL 012									
PROJECT COORDINATES PROP. RIGHT OF WAY									
POINT 1	POINT 6								
N 279,885.3556	N 279,842.7511								
E 3,437,821.8628	E 3,437,742.3568								
POINT 1 TO POINT 6	N58°45'12"W 663.098'								
SECTION	LINE	BEARING	LENGTH	CORD LENGTH	DELTA	RADIUS	ARC LENGTH	SQ. FT.	ACRES
	1-2	S24°49'46"E	5.216'						
	2-3	N64°21'2"E	206.812'						
	3-4	N49°59'4"E	389.098'						
	4-5	S83°33'37"E	59.360'						
	5-6	N74°19'1"E	26.582'						
	6-7	N84°24'00"W	120.296'						
	7-1	S51°30'02"W	571.404'		28'02"52"	1179.000'	577.149'		
TOTAL ACRES PROPOSED RIGHT OF WAY								6,074.1230	0.1394

POINT	PLUS	OFFSET
1	305-1729 CONN RTE 636	25.00' RT.
2	307-1394 CONN RTE 636	25.00' RT.
3	309-3966 CONN RTE 636	25.00' RT.
4	309-7639 CONN RTE 636	25.00' RT.
5	313-6056 CONN RTE 636	25.00' RT.
6	318-4601 CONN RTE 636	35.42' LT.
7	310-0762 CONN RTE 636	70.82' LT.

NOTE: BEARINGS AND COORDINATES BASED ON PROJECT COORDINATES

PROJECT	XXXX-XXX-XXX	SHEET NO.	2K
---------	--------------	-----------	----

FIGURE 2H - 29 SAMPLE METES AND BOUNDS DATA SHEET