

9/5/2014  
8:26:2 AM

LIMITED ACCESS HIGHWAY By Resolution of Highway Commission dated Oct, 04 1956

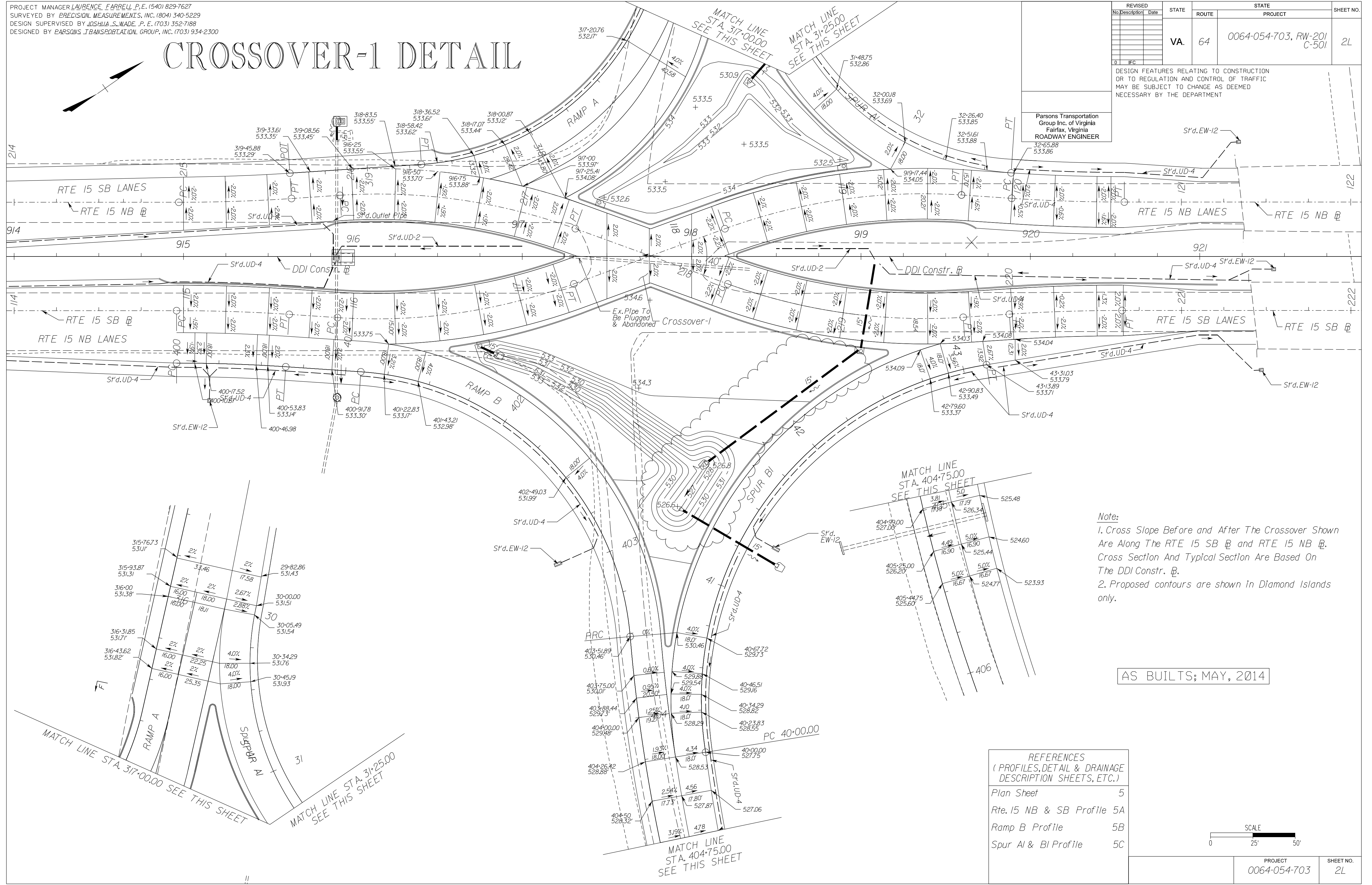
PROJECT MANAGER LAURENCE, FARRELL, P.E. (540) 829-7627  
SURVEYED BY PRECISION MEASUREMENTS, INC. (804) 340-5229  
DESIGN SUPERVISED BY JOSHUA S. WADE, P.E. (703) 352-7188  
DESIGNED BY PARSONS TRANSPORTATION GROUP, INC. (703) 934-2300

# CROSSOVER-1 DETAIL

REVISED	STATE	ROUTE	STATE PROJECT	SHEET NO.
No. Description Date	VA.	64	0064-054-703, RW-201 C-501	2L

DESIGN FEATURES RELATING TO CONSTRUCTION OR TO REGULATION AND CONTROL OF TRAFFIC MAY BE SUBJECT TO CHANGE AS DEEMED NECESSARY BY THE DEPARTMENT

Parsons Transportation Group Inc. of Virginia Fairfax, Virginia  
ROADWAY ENGINEER

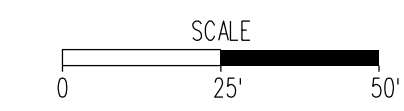


Note:  
1. Cross Slope Before and After The Crossover Shown Are Along The RTE 15 SB @ and RTE 15 NB @. Cross Section And Typical Section Are Based On The DDI Constr. @.  
2. Proposed contours are shown in Diamond Islands only.

AS BUILTS; MAY, 2014

REFERENCES  
(PROFILES, DETAIL & DRAINAGE DESCRIPTION SHEETS, ETC.)

Plan Sheet	5
Rte. 15 NB & SB Profile	5A
Ramp B Profile	5B
Spur AI & BI Profile	5C



PROJECT	0064-054-703	SHEET NO.	2L
---------	--------------	-----------	----

FIGURE 2H - 30 SAMPLE DIVERSION DIAMOND INTERCHANGE DETAIL SHEET