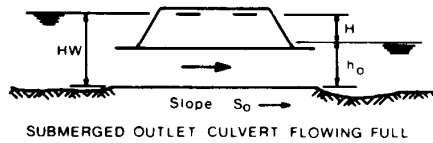
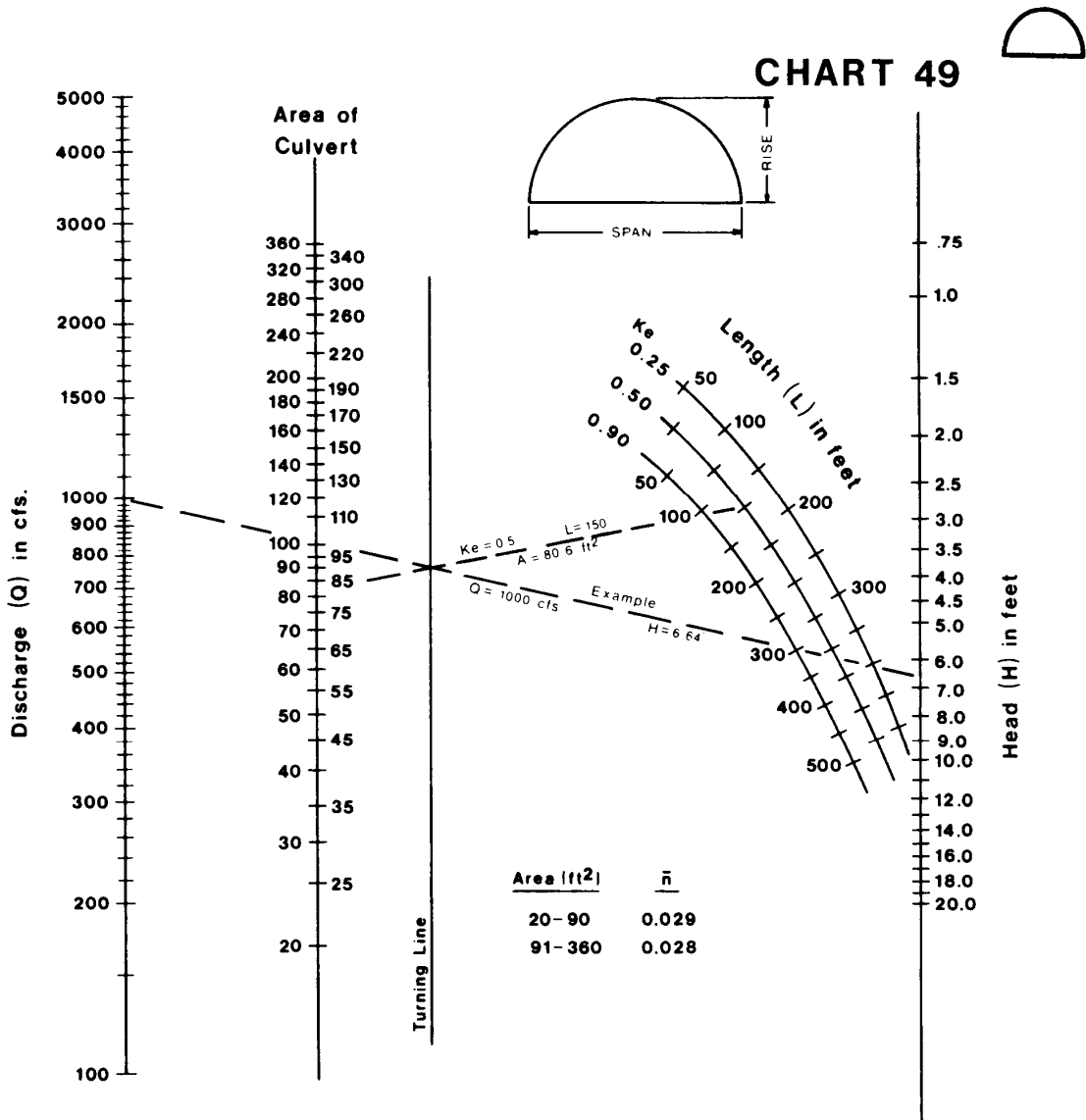


Appendix 8C-49 Outlet Control, Corrugated Metal Arch,
Earth Bottom,
 $0.4 \leq \text{Rise/SPAN} < 0.5$



**HEAD FOR
C.M. ARCH CULVERTS
FLOWING FULL
EARTH BOTTOM ($n_b = 0.022$)
 $0.4 \leq \text{RISE} / \text{SPAN} < 0.5$**

Nomographs adapted from material furnished by
Kaiser Aluminum and Chemical Corporation

Duplication of this nomograph may distort scale

Source: HDS-5