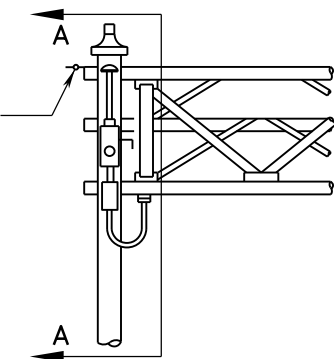


OSS-1

1/2" HOLE THROUGH POLE FOR EYE BOLT FOR OVERHEAD SERVICE ONLY



FRONT VIEW

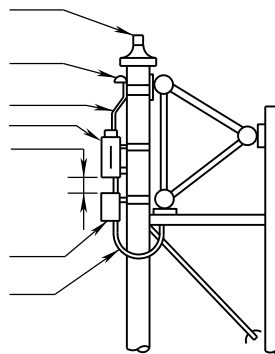
PHOTOELECTRIC CONTROL (IF REQUIRED - SEE NOTE 1)

SERVICE ENTRANCE HEAD

RIGID METAL CONDUIT SAFETY SWITCH 6" MAX.

CONTACTOR (IF REQUIRED - SEE NOTE 1)

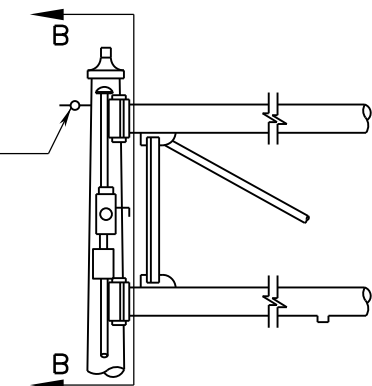
LIQUID TIGHT FLEXIBLE METAL CONDUIT



SECTION A-A

SPAN SIGN STRUCTURE

1/2" HOLE THROUGH POLE FOR EYE BOLT FOR OVERHEAD SERVICE ONLY



FRONT VIEW

PHOTOELECTRIC CONTROL (IF REQUIRED - SEE NOTE 1)

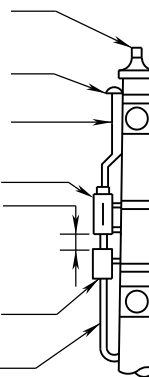
SERVICE ENTRANCE HEAD

RIGID METAL CONDUIT

SAFETY SWITCH 6" MAX.

CONTACTOR (IF REQUIRED - SEE NOTE 1)

RIGID METAL CONDUIT



SECTION B-B

CANTILEVER SIGN STRUCTURE

NOTES:

1. A SAFETY SWITCH SHALL BE INSTALLED ON ALL SIGN STRUCTURES REQUIRING ELECTRICAL POWER. ELECTRICAL SERVICE FOR SIGN STRUCTURES NOT CONTROLLED BY A CONTROL CENTER SHALL HAVE A PHOTOCELL AND A PHOTOCELL CONTROLLED CONTACTOR TO CONTROL THE ELECTRICAL POWER TO LUMINAIRES. THE CONTACTOR SHALL BE IN A NEMA 3R ENCLOSURE.
2. ALL CONDUIT LOCATED IN OR ON OVERHEAD SIGN STRUCTURE SHALL BE 3/4" MINIMUM.



ROAD AND BRIDGE STANDARDS

A COPY OF THE ORIGINAL SEALED AND SIGNED DRAWING IS ON FILE IN THE CENTRAL OFFICE.

OVERHEAD SIGN STRUCTURE  
ELECTRICAL DETAILS FOR SIGN LIGHTING

SPECIFICATION REFERENCE

SHEET 5 OF 7

REVISION DATE

1324.14

09/18

VIRGINIA DEPARTMENT OF TRANSPORTATION

700