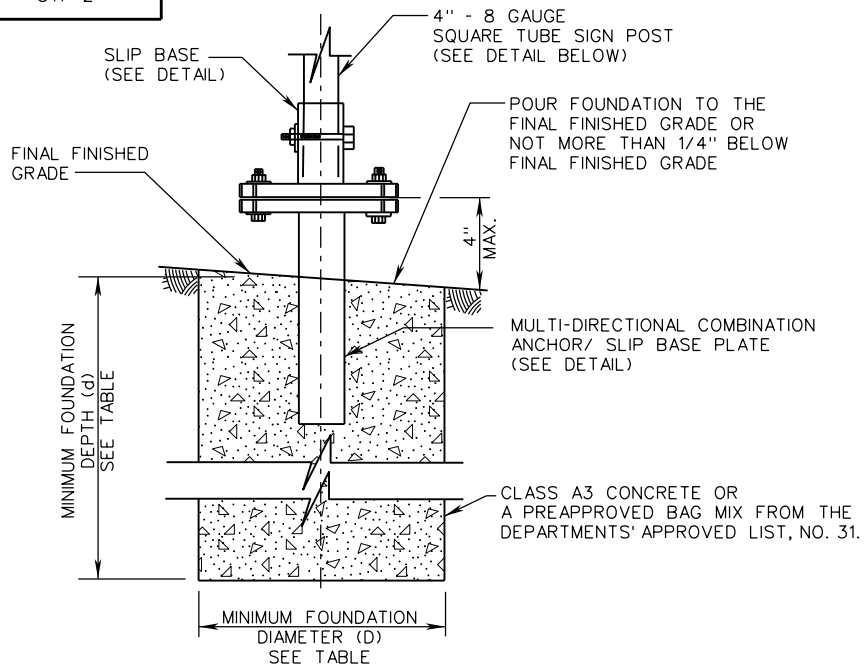
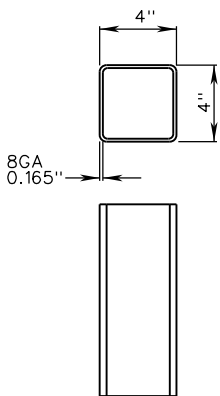


STP-2

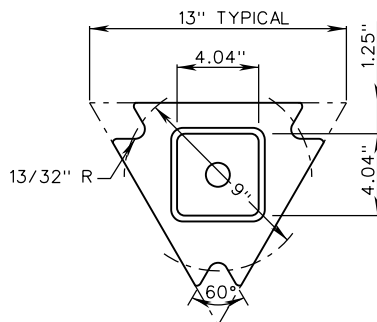


FOUNDATION



STEEL SHALL CONFORM TO ASTM A1011 GRADE 50 AND MUST BE WELDED AND SCARFED OUTSIDE AFTER WELDING AND THEN ZINC FLO-COAT GALVANIZED ON BOTH THE INTERIOR AND EXTERIOR AFTER SCARFING. STEEL SHALL BE COATED WITH A CROMATE CONVERSION COATING & CLEAR ORGANIC POLYMER TOPCOAT.

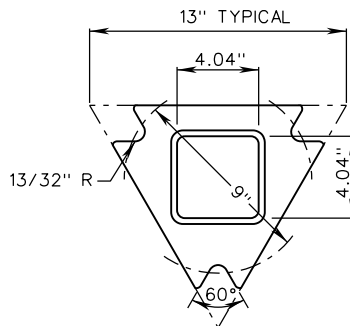
SIGN POST



MATERIALS:
 4 1/2" X 4 1/2" X 7 GAUGE ASTM A500 GRADE B TUBE
 1" THICK ASTM A572 GRADE 50 PLATE STEEL
 GALVANIZE PER ASTM A153
 ALL WELDS TO BE 1/4" X 3/8" FILLET TYPE

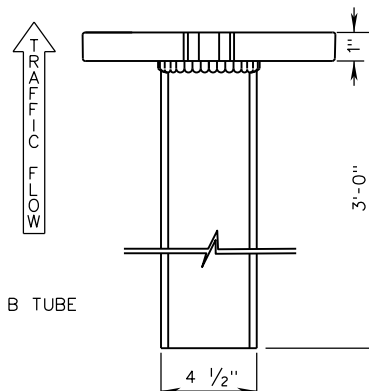
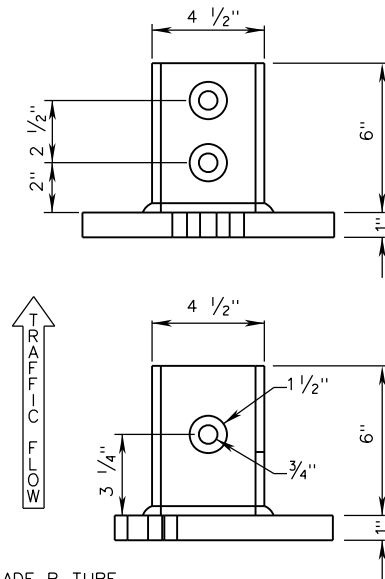
**MULTI-DIRECTIONAL COMBINATION
SLIP BASE PLATE**

NOTE:
 1. POST LENGTH SHALL BE SIGN HEIGHT PLUS 6".



MATERIALS:
 4 1/2" X 4 1/2" X 7 GAUGE ASTM A500 GRADE B TUBE
 1" THICK ASTM A572 GRADE 50 PLATE STEEL
 GALVANIZE PER ASTM A153
 ALL WELDS TO BE 1/4" X 3/8" FILLET TYPE

**MULTI-DIRECTIONAL COMBINATION
ANCHOR BASE PLATE**



A COPY OF THE ORIGINAL SEALED AND SIGNED DRAWING IS ON FILE IN THE CENTRAL OFFICE.

**FOUR INCH SQUARE TUBE SIGN POST
POST AND FOUNDATION DETAILS**

VIRGINIA DEPARTMENT OF TRANSPORTATION

SPECIFICATION
REFERENCE

700



ROAD AND BRIDGE STANDARDS

SHEET 2 OF 10

REVISION DATE

1321.41

NEW 09/18