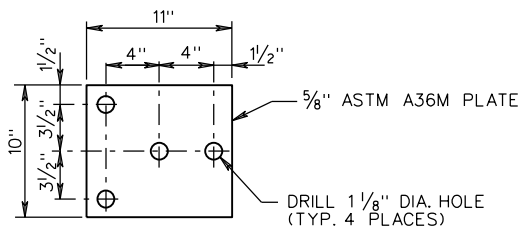
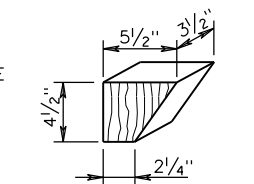


GR-FOA-2 & 4

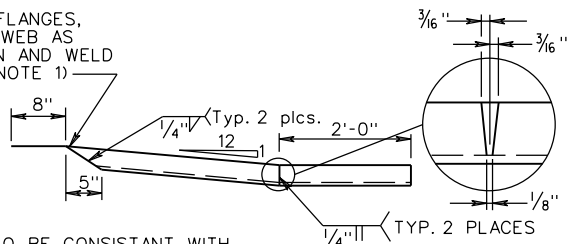


BEARING PLATE

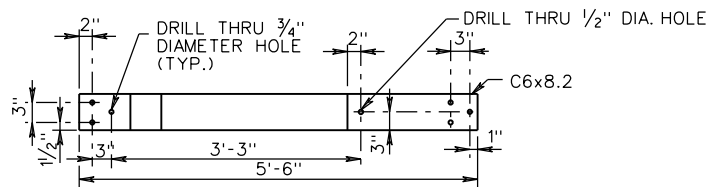


ITEM 10 DETAIL

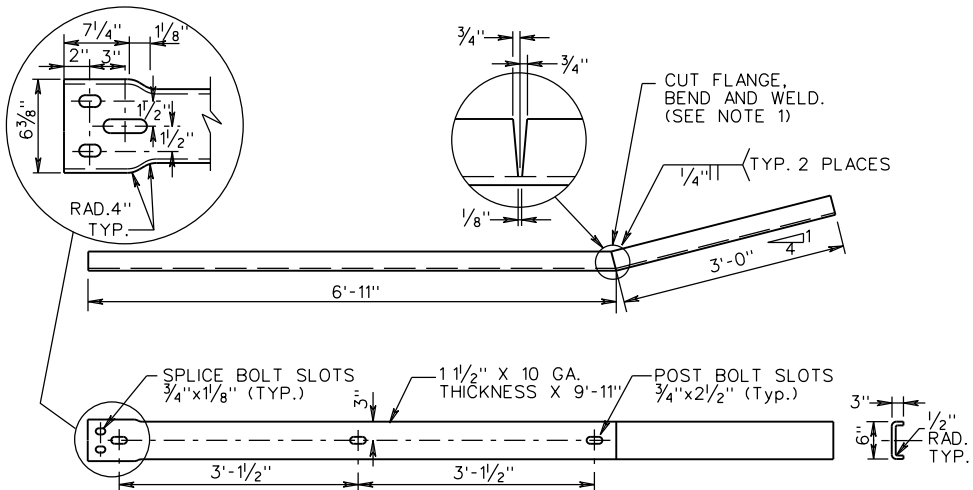
TRIM FLANGES, BEND WEB AS SHOWN AND WELD (SEE NOTE 1)



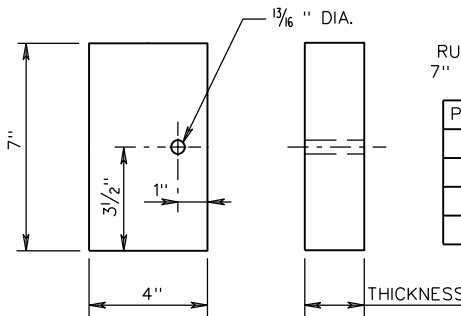
FABRICATE TO BE CONSISTANT WITH THE SLOPE OF THE PARAPET OR BARRIER AND ATTACH FLUSH TO SLOPE.



ITEM 8 DETAIL



ITEM 7 DETAIL



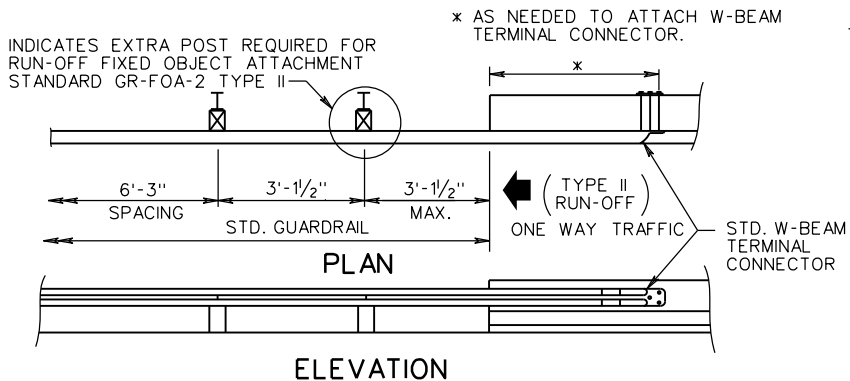
RUBRAIL BLOCKOUT DETAIL

STEEL POSTS
RUBRAIL BLOCKOUTS
7" X 4" X THICKNESS

POST	THICKNESS
1	4 1/4"
2	3 1/4"
3	2"
4	1"

WOOD POSTS
RUBRAIL BLOCKOUTS
7" X 4" X THICKNESS

POST	THICKNESS
1	6 1/4"
2	4 5/8"
3	3 1/8"
4	1/2"



ELEVATION

NOTES:
1. CAN BE FIELD CUT AND BENT USING HEAT. IF SHOP CUT AND BENT, RIGHT HAND OR LEFT HAND MUST BE SPECIFIED DEPENDING ON WHICH SIDE OF THE ROADWAY THE TRANSITION IS USED.

VDOT ROAD AND BRIDGE STANDARDS	
SHEET 3 OF 3	REVISION DATE
501.30	01/14

A COPY OF THE ORIGINAL SEALED AND SIGNED DRAWING IS ON FILE IN THE CENTRAL OFFICE.
W-BEAM GUARDRAIL - FIXED OBJECT ATTACHMENT
RUBRAIL AND HARDWARE DETAILS
 VIRGINIA DEPARTMENT OF TRANSPORTATION

SPECIFICATION REFERENCE
505