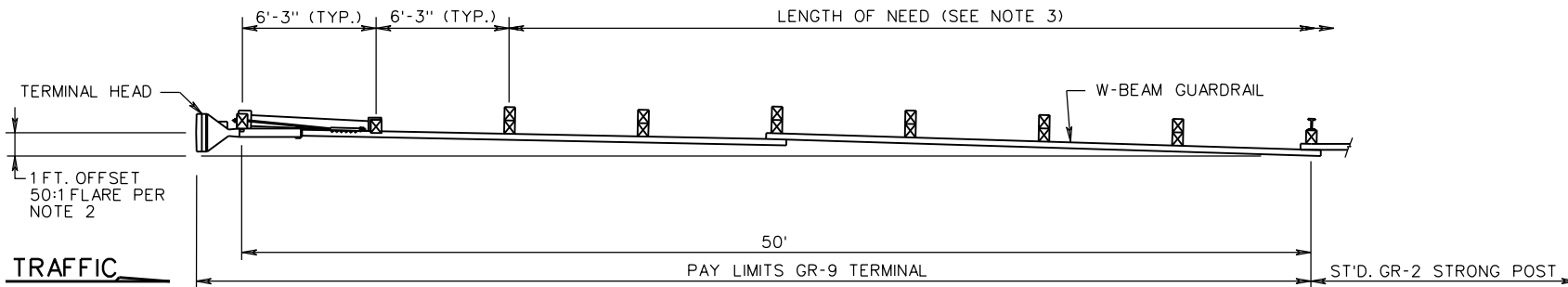
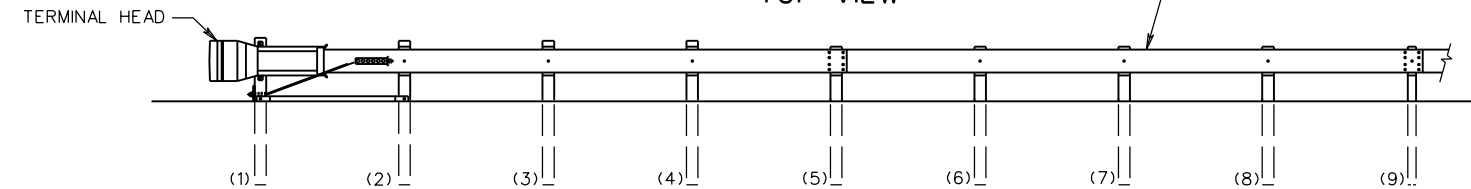


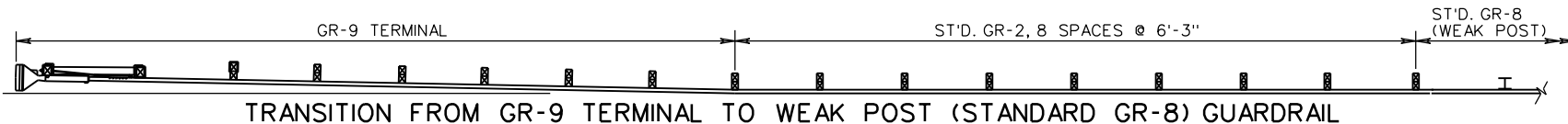
GR-9



TOP VIEW



ELEVATION



TRANSITION FROM GR-9 TERMINAL TO WEAK POST (STANDARD GR-8) GUARDRAIL

NOTES:

1. TANGENT END TERMINAL (GR-9) SHALL BE A VDOT APPROVED PRODUCT MEETING NCHRP 350 OR MASH TESTING CRITERIA. ANY TERMINAL USED FOR THE GR-9 SHALL BE FROM THE VDOT APPROVED PRODUCTS LIST. STANDARD MB-3 TERMINAL OPTIONS ARE INCLUDED WITH THE GR-9 TERMINALS ON THE APPROVED PRODUCTS LIST.
2. ALL TERMINALS SHALL BE INSTALLED ACCORDING TO THE MANUFACTURER'S INSTALLATION INSTRUCTIONS AND THE FOLLOWING VDOT REQUIREMENTS:
  - A. ALL STANDARD GR-9 TERMINALS (SIMILAR TO AS SHOWN ABOVE) SHALL BE INSTALLED WITH A 1 FT. OFFSET ACCOMPLISHED WITH A 50:1 FLARE TO PREVENT THE GUARDRAIL TERMINAL HEAD FROM ENCROACHING ON THE SHOULDER FOR 3R WORK WHERE RIGHT OF WAY IS LIMITED, THE OFFSET CAN BE DECREASED AS DIRECTED BY THE ENGINEER.
  - B. DIRECTION OF THE REFLECTIVE TAPE ON THE TERMINAL HEAD SHALL CONFORM TO MUTCD APPLICATION FOR DIAGONAL STRIPES ON OBJECT MARKERS AND BRIDGE END PANELS. COLOR OF TAPE SHALL BE AMBER (YELLOW).
  - C. DO NOT CHANGE THE LAPPING OF TERMINAL FOR ANY INSTALLATIONS. INSTALL AS SHOWN ABOVE REGARDLESS OF ADJACENT TRAFFIC DIRECTION.
  - D. HEIGHT MEASURED AT TOP OF W-BEAM IS  $27\frac{3}{4}$ " MIN. -  $28\frac{3}{4}$ " MAX.
3. THIS DRAWING IS REPRESENTATIONAL ONLY. DETAILS, DIMENSIONS, QUANTITIES, AND OTHER INFORMATION NOT SHOWN WILL VARY FOR EACH MANUFACTURER. SEE INDIVIDUAL MANUFACTURER'S PLANS FOR THIS INFORMATION.



ROAD AND BRIDGE STANDARDS

SHEET 1 OF 2

REVISION DATE

501.16

07/16

A COPY OF THE ORIGINAL SEALED AND SIGNED DRAWING IS ON FILE IN THE CENTRAL OFFICE.

TANGENT END TERMINAL  
NO FLARE

VIRGINIA DEPARTMENT OF TRANSPORTATION

SPECIFICATION  
REFERENCE

505