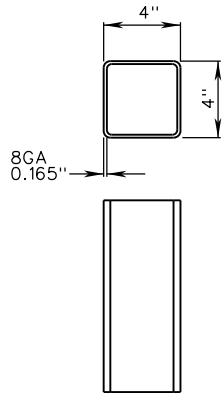
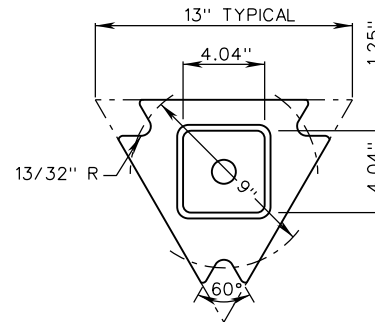


FOUNDATION



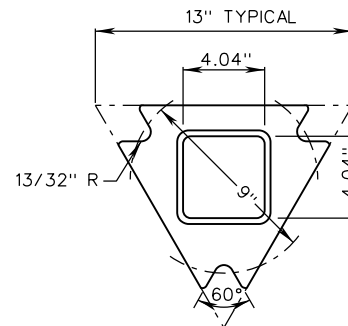
STEEL SHALL CONFORM TO ASTM A1011 GRADE 50 AND MUST BE WELDED AND SCARFED OUTSIDE AFTER WELDING AND THEN ZINC FLO-COAT GALVANIZED ON BOTH THE INTERIOR AND EXTERIOR AFTER SCARFING. STEEL SHALL BE COATED WITH A CROMATE CONVERSION COATING & CLEAR ORGANIC POLYMER TOPCOAT.

SIGN POST



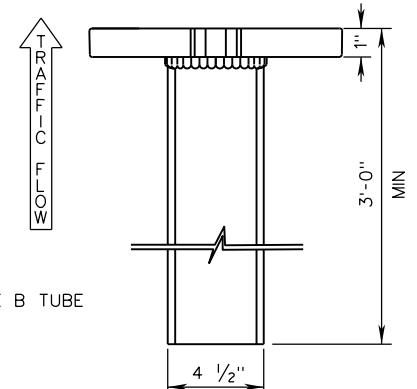
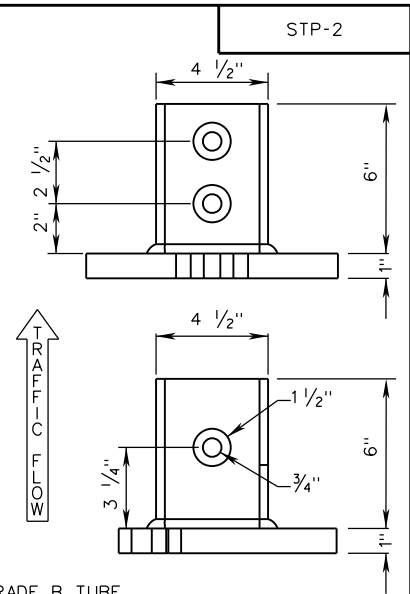
MATERIALS:
 4 1/2" X 4 1/2" X 7 GAUGE ASTM A500 GRADE B TUBE
 1" THICK ASTM A572 GRADE 50 PLATE STEEL
 GALVANIZE PER ASTM A153
 ALL WELDS TO BE 1/4" X 3/8" FILLET TYPE

**MULTI-DIRECTIONAL COMBINATION
 SLIP BASE PLATE**



MATERIALS:
 4 1/2" X 4 1/2" X 7 GAUGE ASTM A500 GRADE B TUBE
 1" THICK ASTM A572 GRADE 50 PLATE STEEL
 GALVANIZE PER ASTM A153
 ALL WELDS TO BE 1/4" X 3/8" FILLET TYPE

**MULTI-DIRECTIONAL COMBINATION
 ANCHOR BASE PLATE**



SPECIFICATION
 REFERENCE

700

A COPY OF THE ORIGINAL SEALED AND SIGNED DRAWING IS ON FILE IN THE CENTRAL OFFICE.

**FOUR INCH SQUARE TUBE SIGN POST
 POST AND FOUNDATION DETAILS**

VIRGINIA DEPARTMENT OF TRANSPORTATION

VDOT

ROAD AND BRIDGE STANDARDS

REVISION DATE

NEW 08/19

SHEET 3 OF 12

1321.42