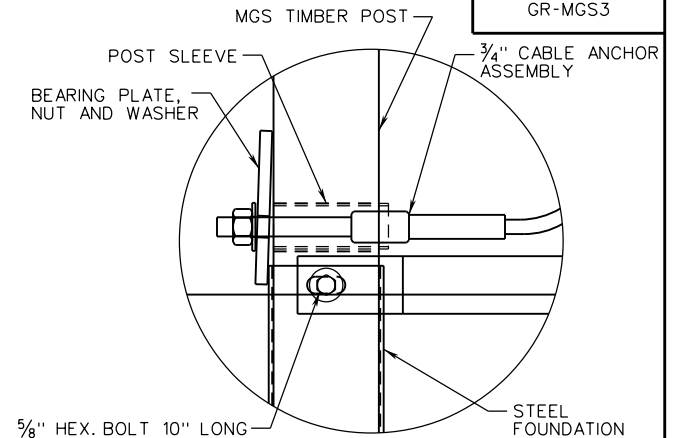
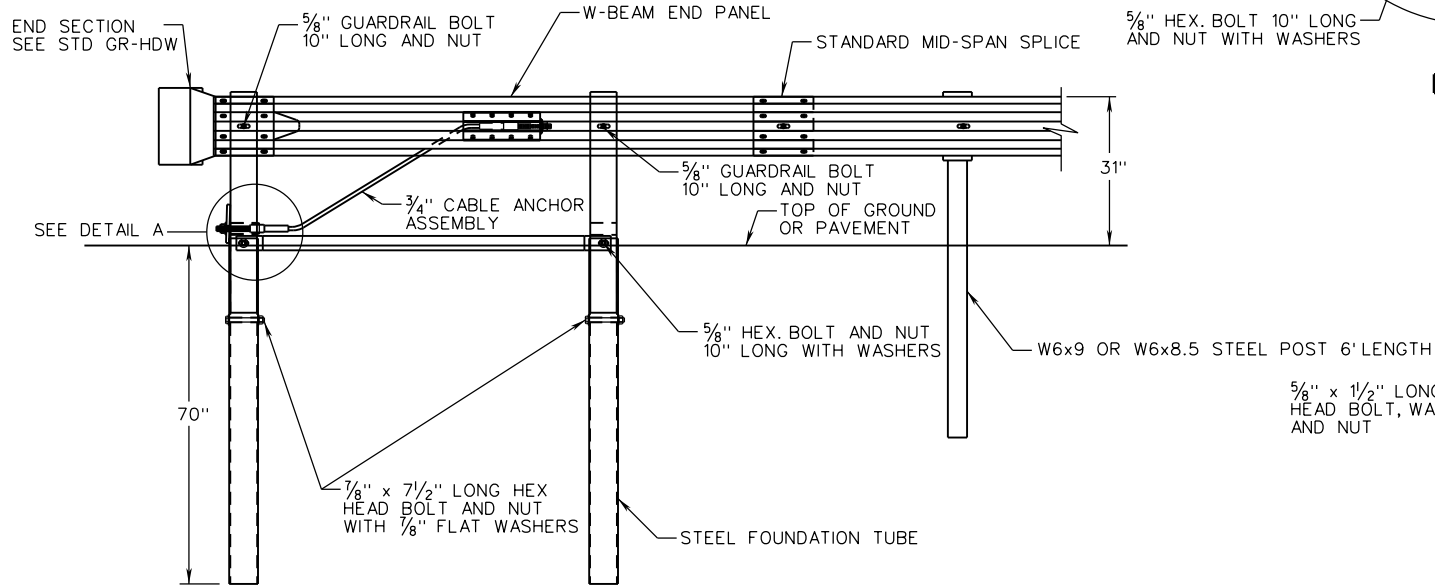


PLAN

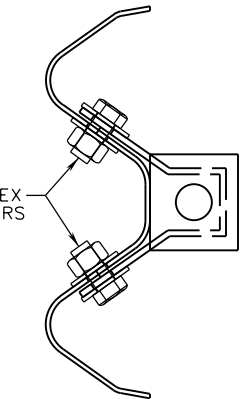


DETAIL A

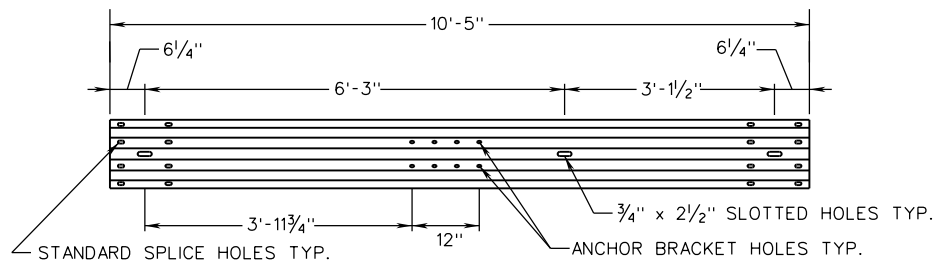


ELEVATION

5/8" x 1/2" LONG HEX HEAD BOLT, WASHERS AND NUT



ANCHOR BRACKET BOLT DETAIL



W BEAM END PANEL DETAIL

NOTES:

1. USE OF THIS TRAILING END ANCHORAGE IS RESTRICTED TO RUN-OFF CONDITIONS ON DIVIDED HIGHWAYS.
2. STEEL POST, BLOCKOUT, AND SPLICE SHALL BE IN ACCORDNCE WITH THE GR-MGS1 STANDARD AND LOCATED AS SHOWN IN THE DETAILS ABOVE.
3. ALL BOLTS, NUTS, WASHERS, AND OTHER STEEL ITEMS ARE TO BE GALVANIZED.
4. WOOD POSTS SHALL BE TREATED WITH A WOOD PRESERVATIVE IN ACCORDANCE WITH THE SPECIFICATIONS.

ITEM CODE 13287 EACH

SPECIFICATION REFERENCE

221
236
505

A COPY OF THE ORIGINAL SEALED AND SIGNED DRAWING IS ON FILE IN THE CENTRAL OFFICE.

MIDWEST GUARDRAIL SYSTEM
(TRAILING END ANCHORAGE)

VIRGINIA DEPARTMENT OF TRANSPORTATION

VDOT

ROAD AND BRIDGE STANDARDS

REVISION DATE

SHEET 1 OF 2

NEW 02/17

506.09