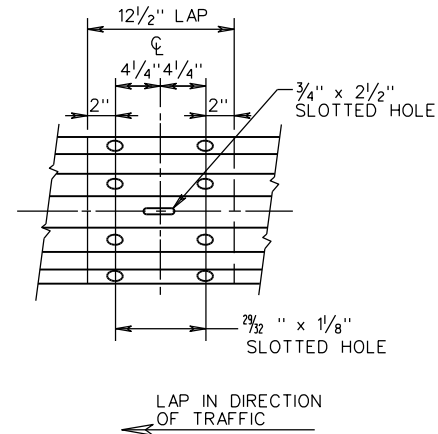
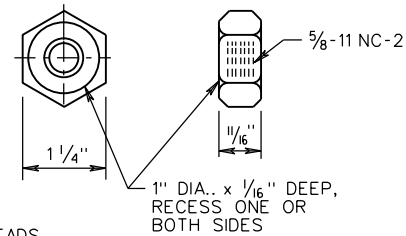
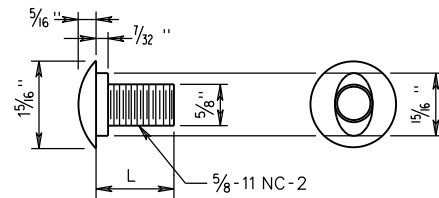
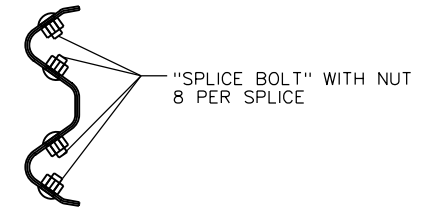


SECTION THRU RAIL ELEMENT AND W BEAM BACK-UP PLATE



DETAIL OF MID-SPAN SPLICE JOINT



- L = 1/4" FOR SPLICE BOLT-FULL LENGTH THREADS
- L = 2" FOR SPLICE BOLT-FULL LENGTH THREADS ON NESTED W BEAMS.
- L = 14" FOR STEEL POST WITH 12" BLOCKOUT BOLT-1/2" MIN. THREADS
- L = 18" FOR STEEL POST WITH 16" BLOCKOUT DEPTH BOLT-2" MIN. THREADS
- L = 26" FOR STEEL POST WITH 24" BLOCKOUT DEPTH BOLT-2" MIN. THREADS

DETAIL OF BUTTON HEAD BOLT AND RECESS NUT (GUARDRAIL BOLT)

NOTES:

ALL HARDWARE IS TO BE GALVANIZED IN ACCORDANCE WITH THE SPECIFICATIONS.

SPECIFICATION REFERENCE

221
505

A COPY OF THE ORIGINAL SEALED AND SIGNED DRAWING IS ON FILE IN THE CENTRAL OFFICE.

MGS STANDARD GUARDRAIL HARDWARE

VIRGINIA DEPARTMENT OF TRANSPORTATION

VDOT

ROAD AND BRIDGE STANDARDS

REVISION DATE

NEW 02/17

SHEET 1 OF 3

506.01