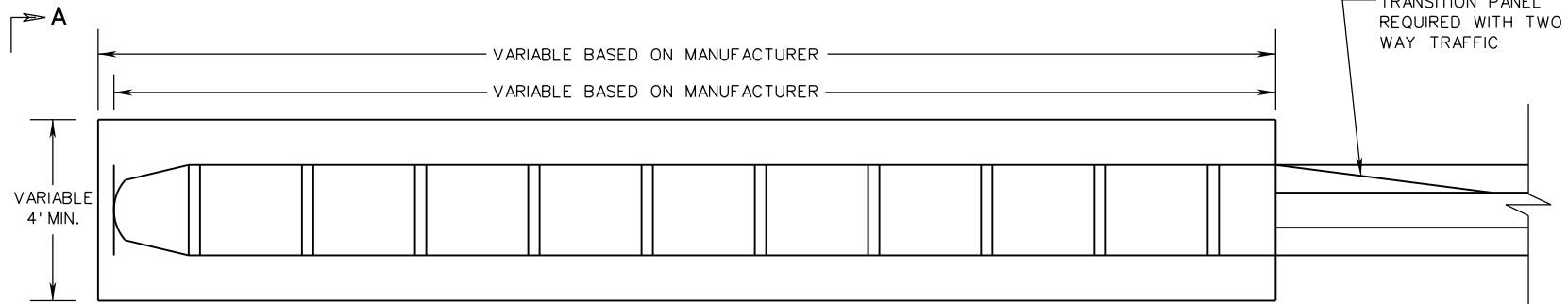
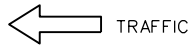
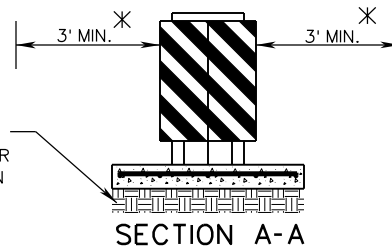


IA-LM

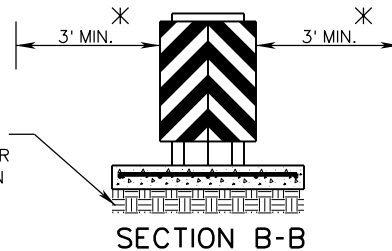


PLAN VIEW
(BI-DIRECTIONAL)

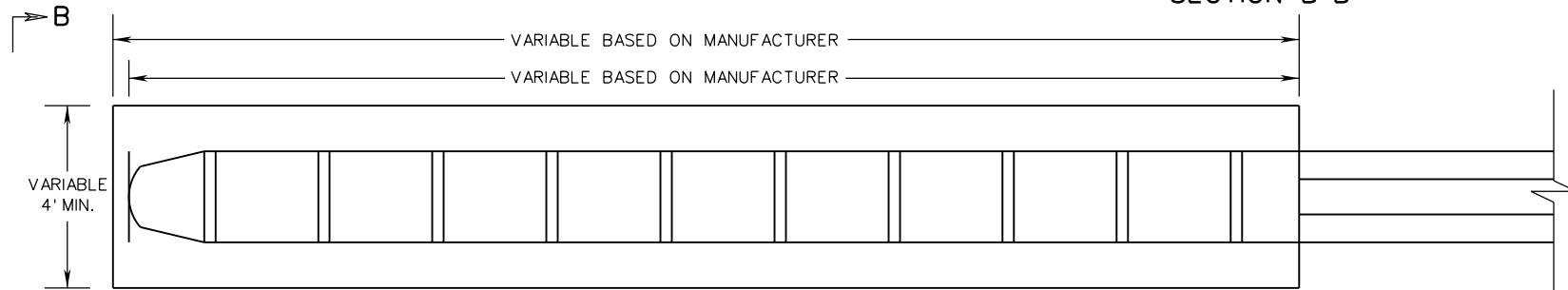
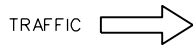
* THE MINIMUM DISTANCE SHOWN IS A MINIMUM CLEAR SPACE REQUIRED FOR THE PROPER OPERATION OF THE IMPACT ATTENUATOR. STANDARD SHOULDER WIDTHS SHOULD BE DESIGNED AND MAINTAINED IN ACCORDANCE WITH CURRENT VDOT POLICY.



SECTION A-A



SECTION B-B



PLAN VIEW
(UNI-DIRECTIONAL)

A COPY OF THE ORIGINAL SEALED AND SIGNED STANDARD DRAWING IS ON FILE IN THE CENTRAL OFFICE

IMPACT ATTENUATOR

LOW MAINTENANCE TYPE 1 RE-DIRECTIVE IMPACT ATTENUATOR
(TL-3 ≥ 40 MPH)

VIRGINIA DEPARTMENT OF TRANSPORTATION

SPECIFICATION
REFERENCE

105
221
505
512



ROAD AND BRIDGE STANDARDS

MASH 2016

SHEET 2 OF 2

REVISION DATE

505.11

12/18