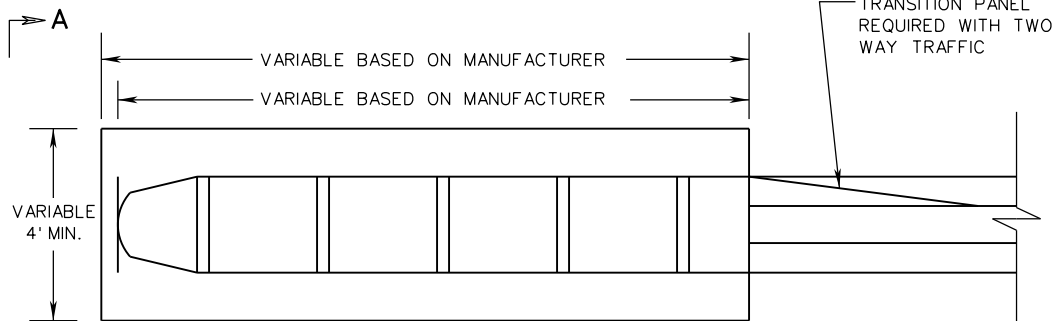
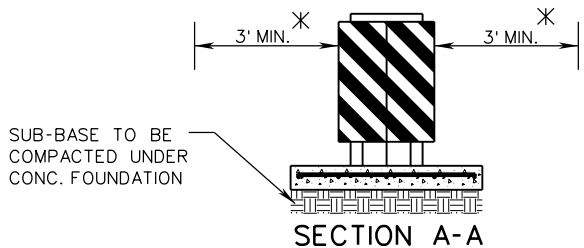
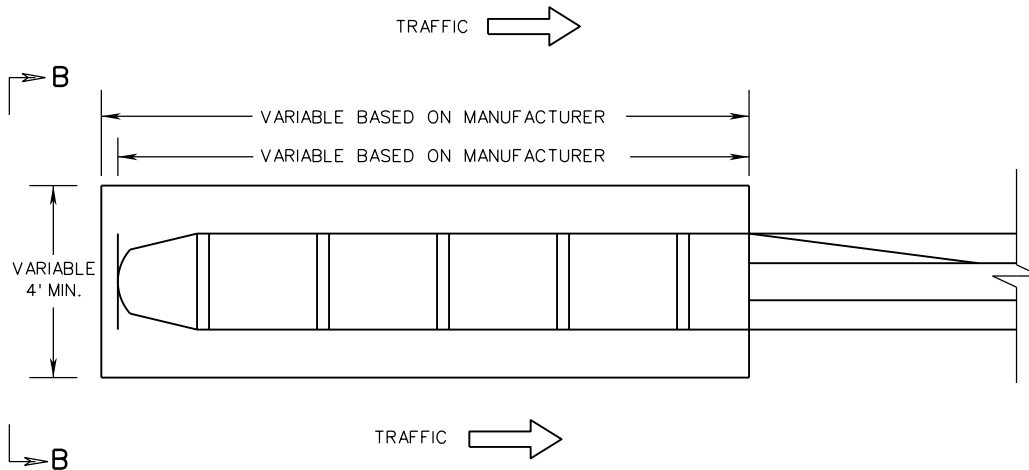
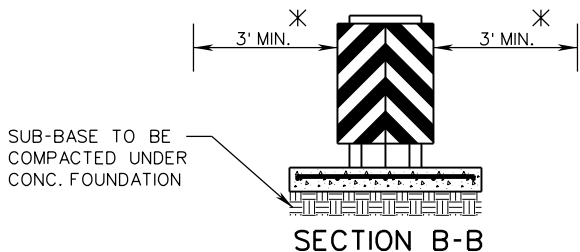


IA-2



* THE MINIMUM DISTANCE SHOWN IS A MINIMUM CLEAR SPACE REQUIRED FOR THE PROPER OPERATION OF THE IMPACT ATTENUATOR. STANDARD SHOULDER WIDTHS SHOULD BE DESIGNED AND MAINTAINED IN ACCORDANCE WITH CURRENT VDOT POLICY.



ROAD AND BRIDGE STANDARDS

A COPY OF THE ORIGINAL SEALED AND SIGNED STANDARD DRAWING IS ON FILE IN THE CENTRAL OFFICE

IMPACT ATTENUATOR

SPECIFICATION REFERENCE

SHEET 2 OF 2

REVISION DATE

TYPE 1 RE-DIRECTIVE PERMANENT INSTALLATION (TL-2 < 40 MPH)

105
221
505
512

505.05

12/18

MASH 2016

VIRGINIA DEPARTMENT OF TRANSPORTATION