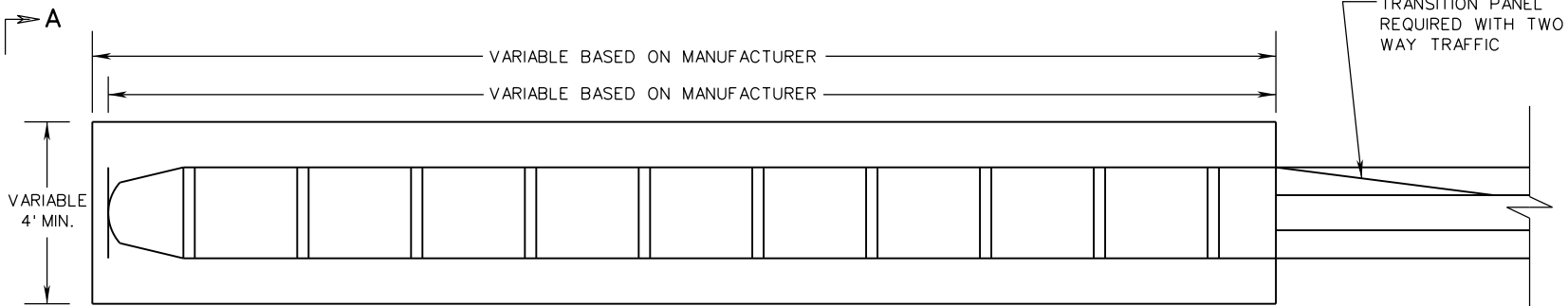
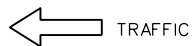
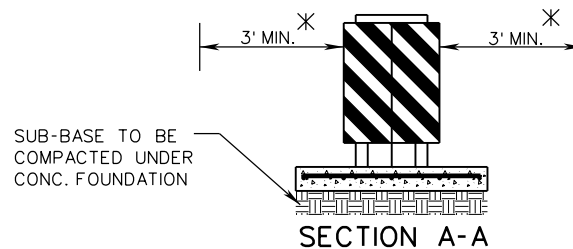


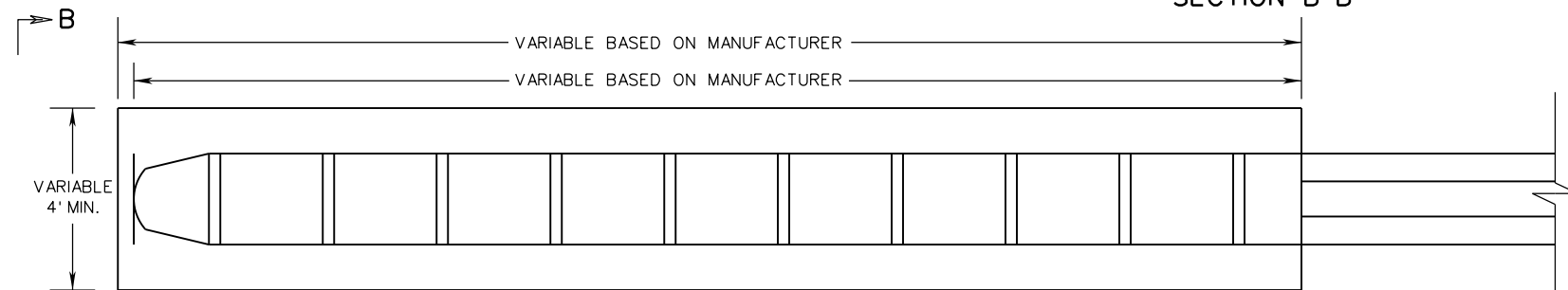
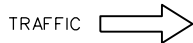
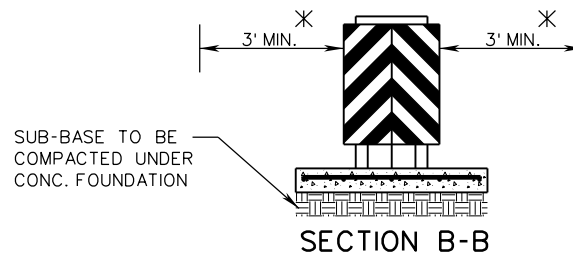
IA-1



PLAN VIEW
(BI-DIRECTIONAL)



✕ THE MINIMUM DISTANCE SHOWN IS A MINIMUM CLEAR SPACE REQUIRED FOR THE PROPER OPERATION OF THE IMPACT ATTENUATOR. STANDARD SHOULDER WIDTHS SHOULD BE DESIGNED AND MAINTAINED IN ACCORDANCE WITH CURRENT VDOT POLICY.



PLAN VIEW
(UNI-DIRECTIONAL)



ROAD AND BRIDGE STANDARDS

A COPY OF THE ORIGINAL SEALED AND SIGNED STANDARD DRAWING IS ON FILE IN THE CENTRAL OFFICE

IMPACT ATTENUATOR

SPECIFICATION REFERENCE

SHEET 2 OF 3

REVISION DATE

TYPE 1 RE-DIRECTIVE PERMANENT INSTALLATION (TL-3 ≥ 40 MPH)

105
221
505
512

505.02

12/18

MASH 2016

VIRGINIA DEPARTMENT OF TRANSPORTATION