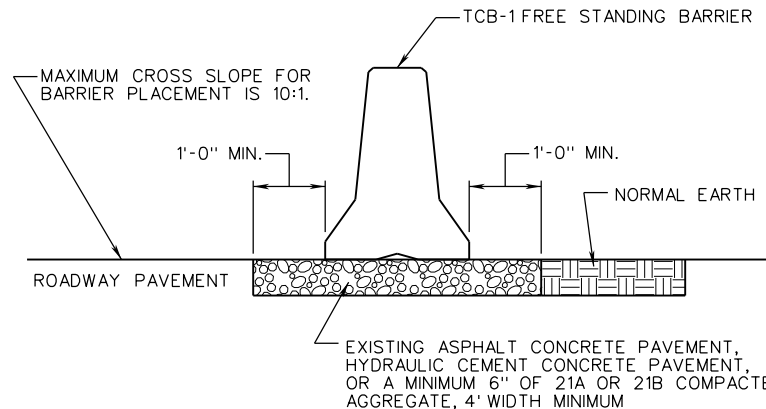
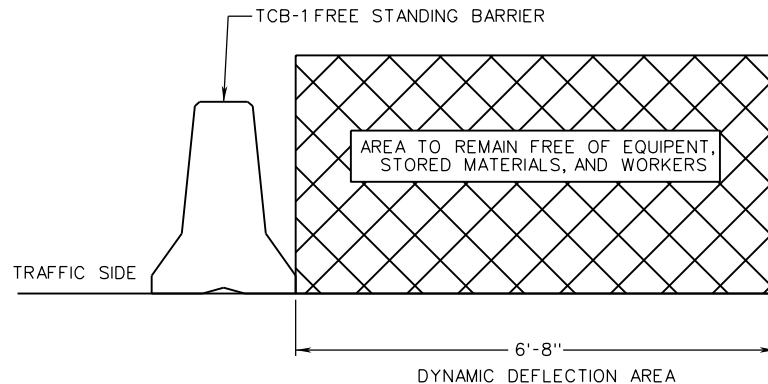


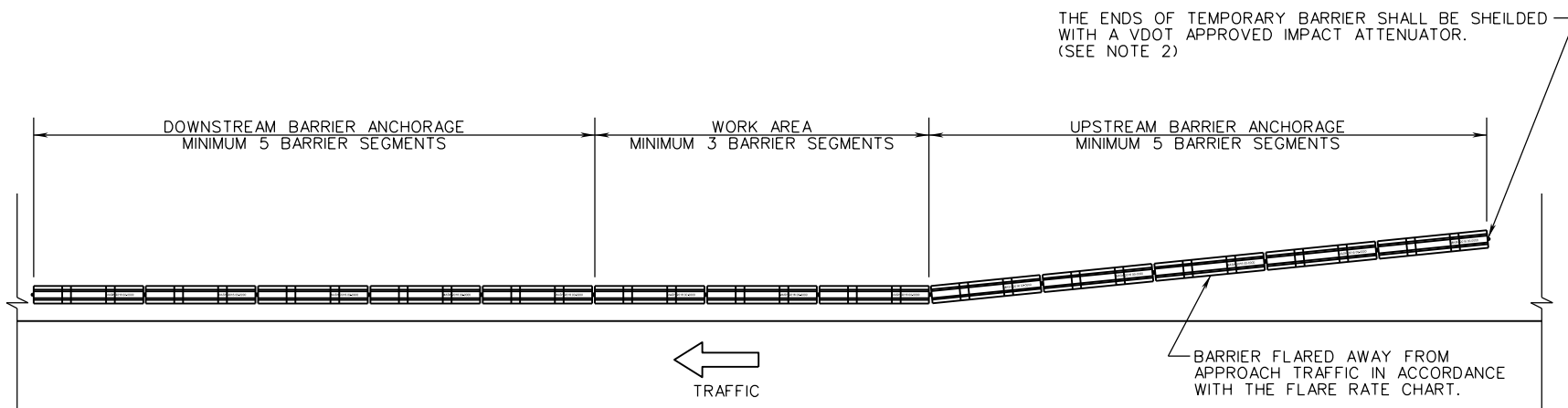
BARRIER SHALL BE PLACED ON A PAVED SURFACE OR A COMPACTED AGGREGATE BASE A MINIMUM OF 6" IN DEPTH. PLACEMENT OF BARRIER ON GRASS, SOIL, OR ANY NON-PAVED AREA IS NOT PERMITTED.



SURFACE REQUIREMENTS FOR BARRIER PLACEMENT



BARRIER DEFLECTION AREA



NOTES:

1. THE SPACE BEHIND THE 5 SEGMENTS OF ANCHORAGE BARRIER SHALL REMAIN FREE OF EQUIPMENT, STORED MATERIALS, AND WORKERS.
2. BARRIERS EXTENDED ON A FLARE TO THE ROADWAY CLEAR ZONE SHALL HAVE A MINIMUM OF 2 BARRIER SEGMENTS PLACED BEYOND THE ROADWAY CLEAR ZONE AT THE SAME FLARE RATE.

MINIMUM WORK AREA AND ANCHORAGE

SPECIFICATION REFERENCE
105 512

A COPY OF THE ORIGINAL SEALED AND SIGNED DRAWING IS ON FILE IN THE CENTRAL OFFICE.

TEMPORARY CONCRETE BARRIER
 (MASH FREESTANDING PRECAST PIN AND LOOP FOR TEMPORARY USE)
 VIRGINIA DEPARTMENT OF TRANSPORTATION

VDOT	
ROAD AND BRIDGE STANDARDS	
REVISION DATE NEW 04/20	SHEET 3 OF 3 509.03