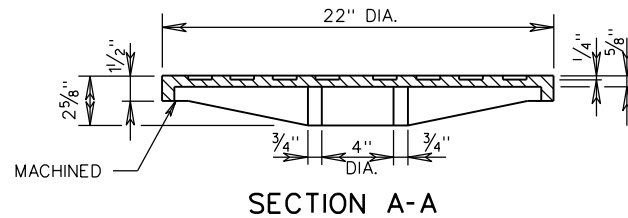
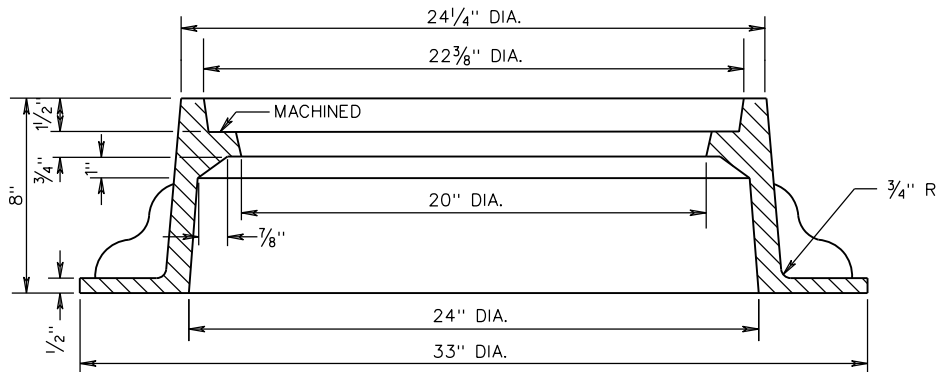
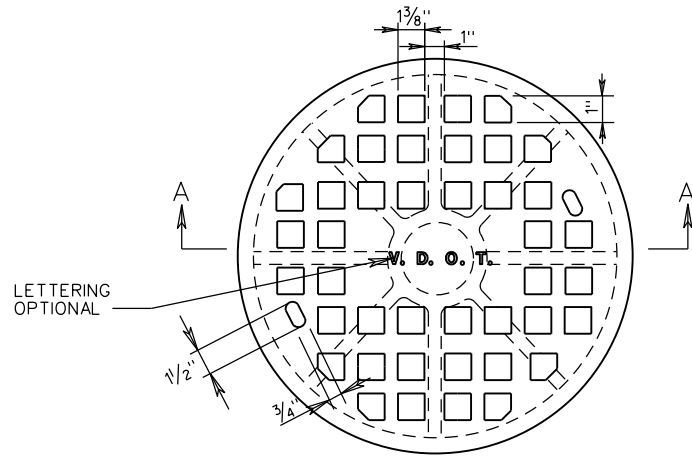
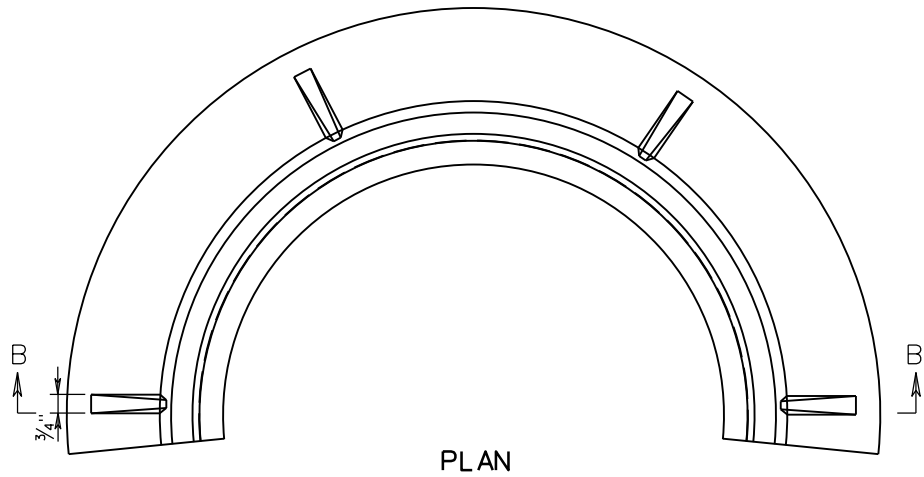


MH-1



FRAME AND COVER SHALL BE RATED FOR TRAFFIC CONDITIONS.

APPROXIMATE WEIGHT

CAST IRON

FRAME 235 ± 12 LBS.  
COVER 130 ± 7 LBS.



ROAD AND BRIDGE STANDARDS

SHEET 3 OF 3

REVISION DATE

106.04

04/20

A COPY OF THE ORIGINAL SEALED AND SIGNED DRAWING IS ON FILE IN THE CENTRAL OFFICE.

# STANDARD MANHOLE FRAME AND COVER

VIRGINIA DEPARTMENT OF TRANSPORTATION

SPECIFICATION REFERENCE

224  
302