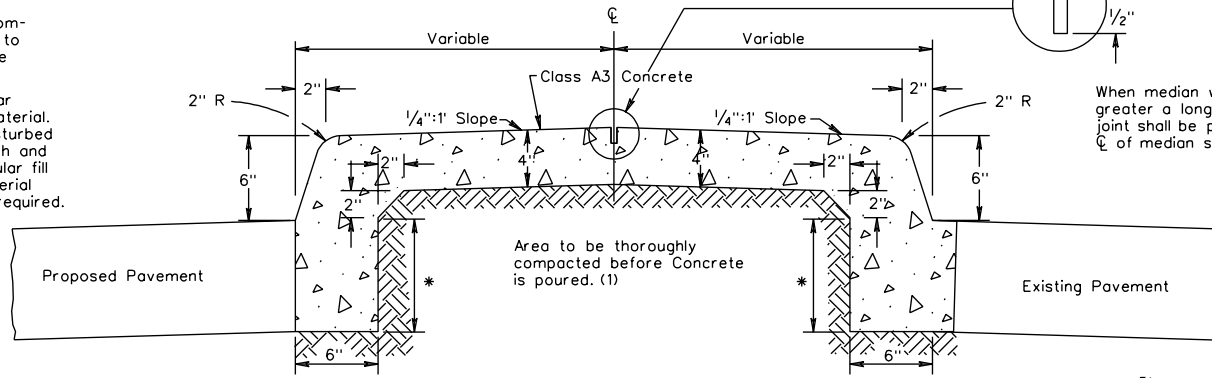


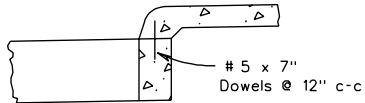
REVISED ON 7/04

MS-1A

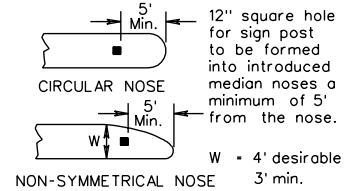
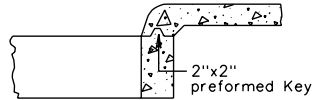
(1) Thoroughly compacted area to consist of the following:  
 In Fills-Regular fill material.  
 In Cuts-Undisturbed earth and regular fill material as required.



SUGGESTED CONSTRUCTION METHOD IF TOP SLAB IS POURED SEPARATELY

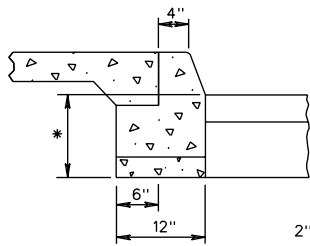


ALTERNATE CONSTRUCTION METHOD IF TOP SLAB IS POURED SEPARATELY

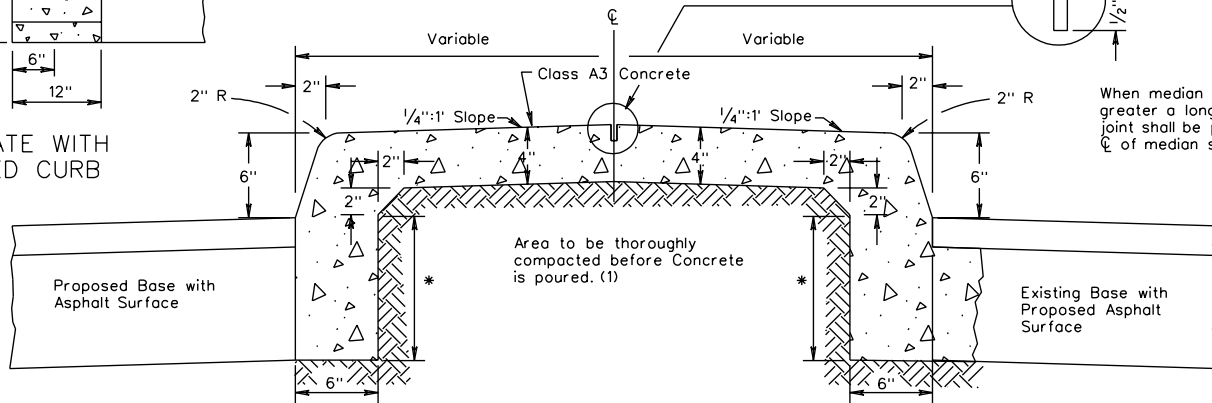


\* The depth of curb may be reduced as much as 3" (9" depth) or increased as much as 3" (15" depth) in order that the bottom of curb will coincide with the top of a course of the pavement substructure. Otherwise the depth is to be 12" as shown. No adjustment in the price bid is to be made for a decrease or an increase in depth.

Additional holes of adequate size to be provided for sign posts, delineator posts, etc. as shown on the plans or directed by the Engineer.



ALTERNATE WITH EXTRUDED CURB



SPECIFICATION REFERENCE

502

STANDARD SOLID CONCRETE RAISED MEDIAN STRIP

VIRGINIA DEPARTMENT OF TRANSPORTATION

REV. 7/01

202.03