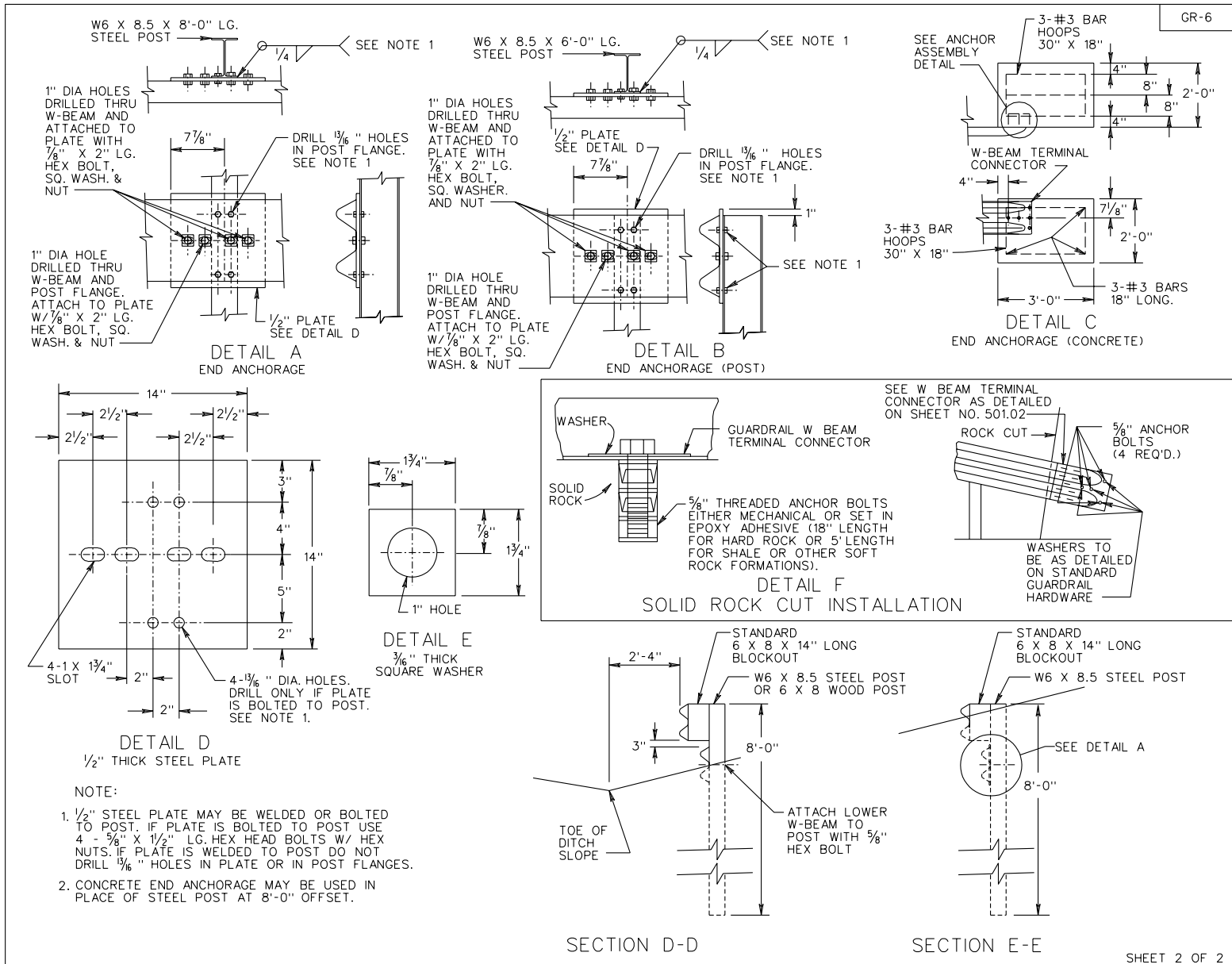


REVISED ON 7/01

REVISED ON 3/03

REVISED ON 7/03

REVISED ON 7/04



GR-6

SHEET 2 OF 2

SPECIFICATION REFERENCE
505 221

TERMINAL TREATMENT FOR W BEAM GUARDRAIL

VIRGINIA DEPARTMENT OF TRANSPORTATION

501.10

REVISED ON 7/02

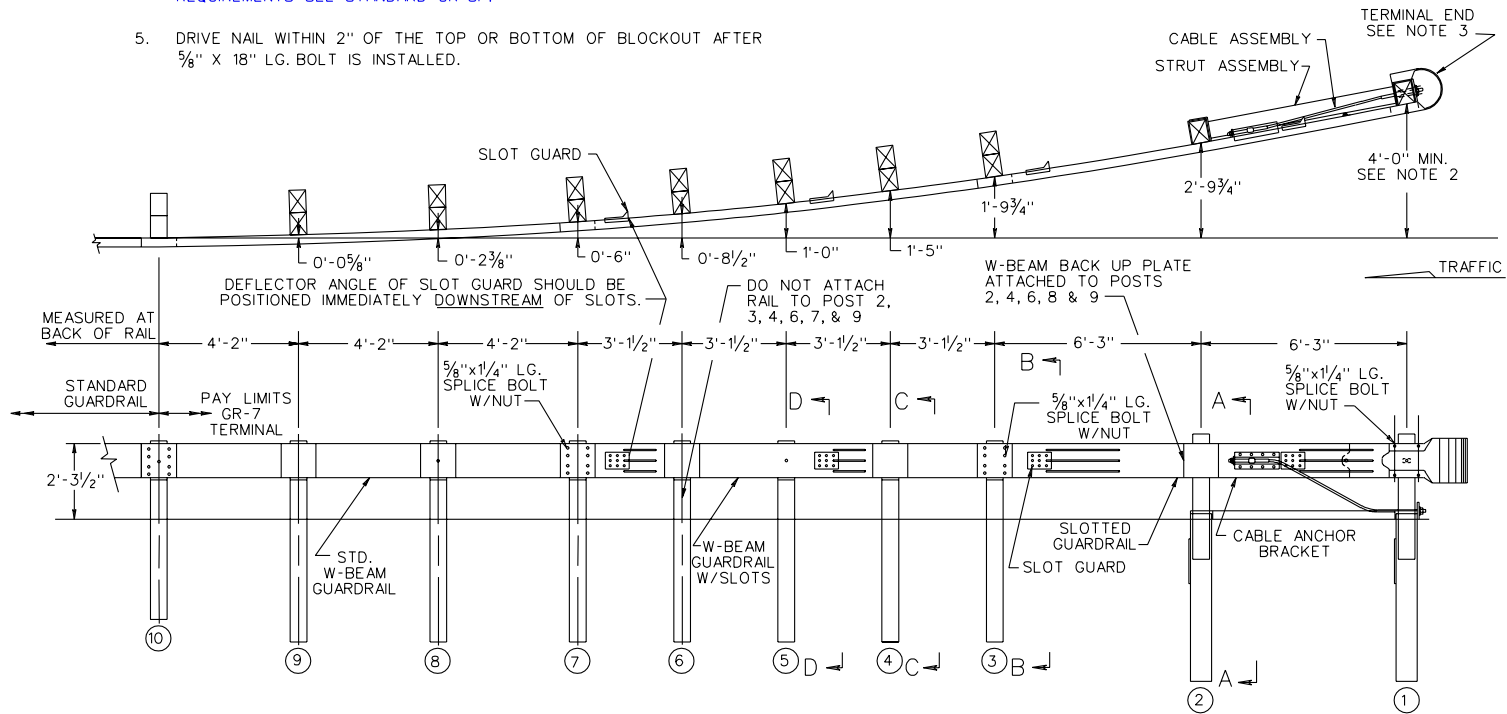
REVISED ON 7/03

REVISED ON 7/04

GR-7

NOTES:

1. GUARDRAIL TERMINAL, STD. GR-7 IS TO BE SRT 350 (AS SHOWN) MANUFACTURED BY SYRO STEEL COMPANY, THE FLEAT 350 MANUFACTURED BY ROAD SYSTEMS, INC., OR OTHER VDOT APPROVED EQUAL MEETING NCHRP 350 TESTING CRITERIA UTILIZING A 4 FT. OFFSET.
2. THE POST OFFSET DIMENSION ARE GIVEN TO THE CENTER OF THE TRAFFIC FACE OF THE BLOCKOUTS EXCEPT AT THE FIRST TWO POST, WHERE THE DIMENSION IS TO THE CENTER OF THE TRAFFIC FACE OF THE POST. OFFSET POINTS ARE TO BE LOCATED BY CHORD MEASUREMENT AT THE BACK OF THE RAIL EQUAL TO THE NOMINAL POST SPACINGS SHOWN. POST ARE TO BE SET APPROXIMATELY RADIAL TO THE RAILING AT EACH POST LOCATION.
3. YELLOW 8" x 36" REFLECTIVE ADHESIVE SHEETING TO BE APPLIED TO NOSE IN ACCORDANCE WITH VDOT SPECS.
4. FOR DETAILS OF GUARDRAIL TERMINAL INSTALLATION SITE PREPARATION REQUIREMENTS SEE STANDARD GR-SP.
5. DRIVE NAIL WITHIN 2" OF THE TOP OR BOTTOM OF BLOCKOUT AFTER 5/8" X 18" LG. BOLT IS INSTALLED.



SHEET 1 OF 3

BREAKAWAY CABLE TERMINAL 4' FLARE

VIRGINIA DEPARTMENT OF TRANSPORTATION

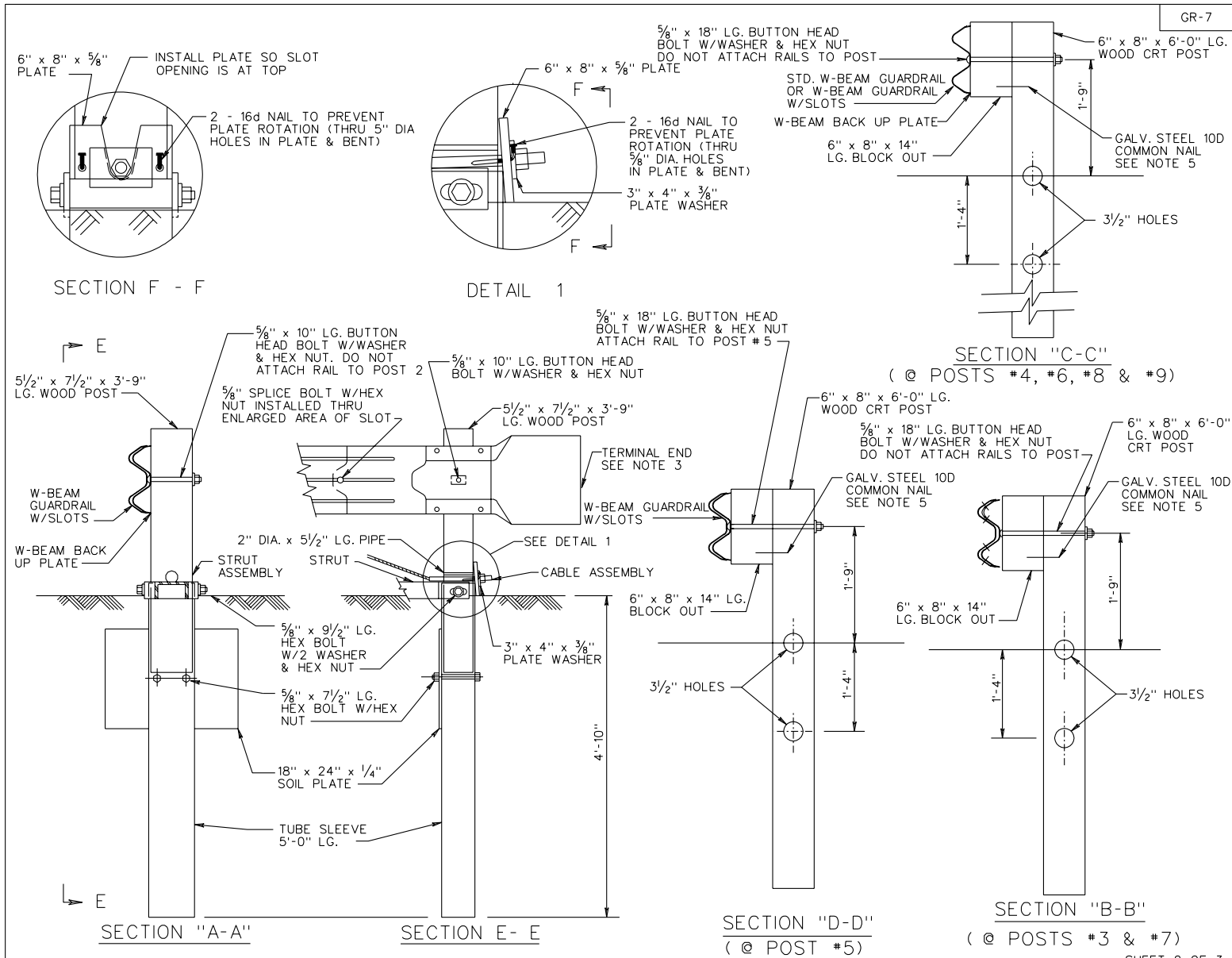
SPECIFICATION
REFERENCE

221
505

501.11

REVISED ON 7/02

REVISED ON 7/04

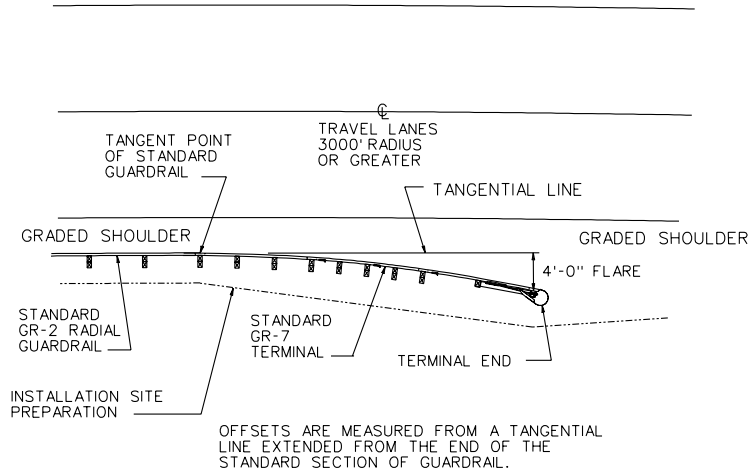


SPECIFICATION REFERENCE
221 505

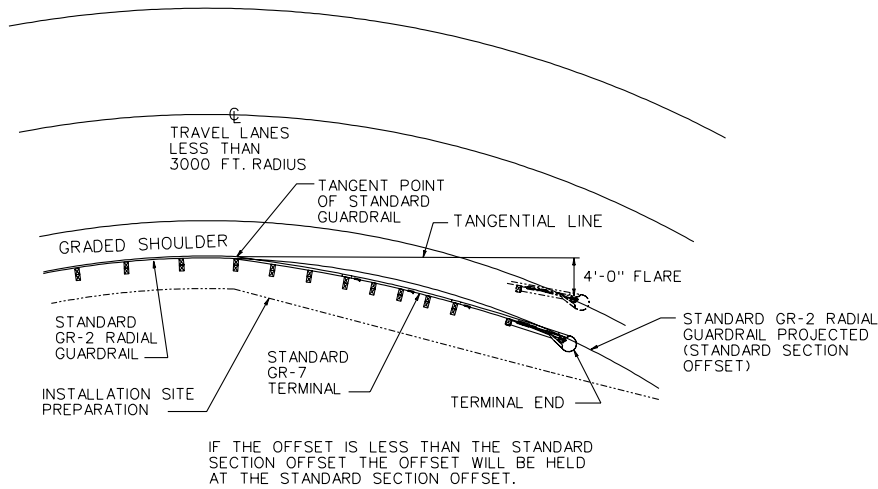
BREAKAWAY CABLE TERMINAL
 4' FLARE

VIRGINIA DEPARTMENT OF TRANSPORTATION

GR-7



FLARED TERMINAL PLACEMENT
3000 FT. RADIUS OR GREATER



FLARED TERMINAL PLACEMENT ON
INSIDE OF CURVE - LESS THAN
3000 FT. RADIUS

SHEET 3 OF 3

BREAKAWAY CABLE TERMINAL
4' FLARE

VIRGINIA DEPARTMENT OF TRANSPORTATION

SPECIFICATION
REFERENCE

221
505

501.13