

SECTION A-A

6061-T6 Aluminum Alloy 1/4"-20 hexagon head nut to be installed with torque not to exceed 25 in. Lbs.

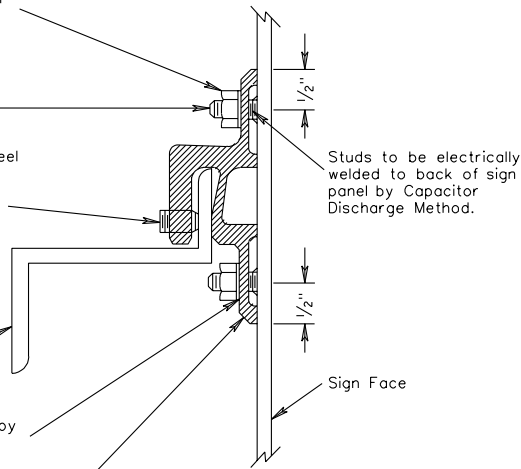
5356-H32 Aluminum Alloy 1/4"-20x1/2" long stud.

Type 304 stainless steel cup point set screw 3/8"-16x1/2" long NC-2 socket head to be provided in each panel clip.

Zee Bar 6061-T6 Aluminum Alloy.

7075-T6 Aluminum Alloy 0.255 I. D. 0.493 O. D. x 0.062" thick spring lockwasher.

6061-T6 Aluminum Alloy panel clip.



SECTION B-B

Sign Face

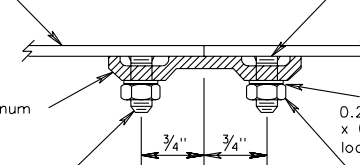
1/8" Thick backing strip 6061-T6 Aluminum Extrusion.

5356-H32 Aluminum Alloy 1/4"-20x1/2" long stud.

Studs to be electrically welded to back of sign panel by Capacitor Discharge Method.

7075-T6 Aluminum Alloy 0.255 I. D. 0.493 O. D. x 0.062" thick spring lockwasher.

6061-T6 Aluminum Alloy 1/4"-20 hexagon head nut to be installed with torque not to exceed 25 in. Lbs.



SIGN PANEL DESIGN