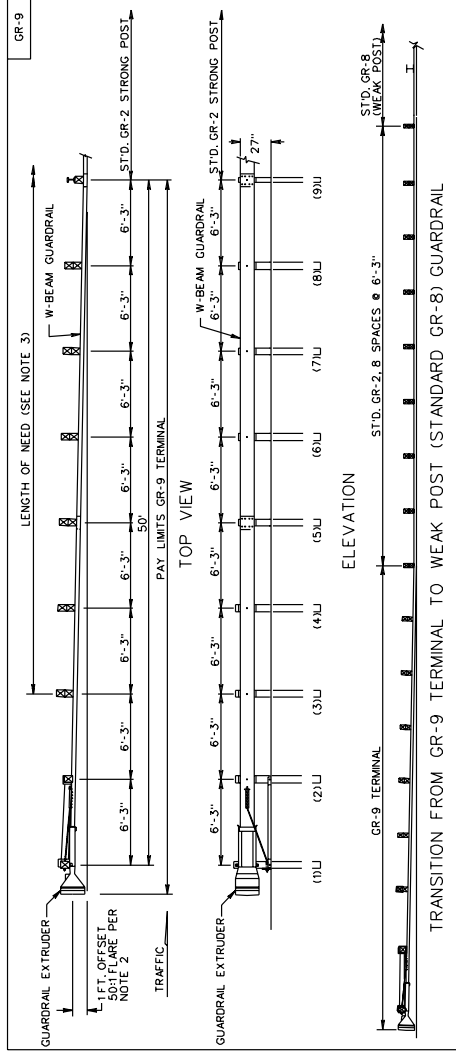


SURVEYED BY _____
 SUPERVISED BY _____
 DESIGNED BY _____



- NOTES:
1. ALTERNATE BREAKAWAY CABLE TERMINAL (GR-9) IS TO BE LT-2000 (SIMILAR TO AS SHOWN), OR CAT. (STD. MB-3 TERMINAL OPTION) AS MANUFACTURED BY SYRO STEEL COMPANY, BRACKMISTAR (STD. MB-3 TERMINAL OPTION) AS MANUFACTURED BY ENERGY SYSTEMS, INC., OR OTHER VENDOR APPROVED EQUAL MEETING NCHRP 350 TESTING CRITERIA. INSTRUCTIONS AND THE FOLLOWING VDOT REQUIREMENTS:
 2. ALL TERMINALS SHALL BE INSTALLED ACCORDING TO THE MANUFACTURER'S INSTALLATION INSTRUCTIONS AND THE FOLLOWING VDOT REQUIREMENTS:
 - A. ALL STANDARD GR-9 TERMINALS (SIMILAR TO AS SHOWN ABOVE) SHALL BE INSTALLED WITH 1" OFFSET TO PREVENT ENCROACHMENT WITH 50' FLARE TO PREVENT THE GUARDRAIL EXTRUDER FROM ENCROACHING ON THE SHOULDER FOR 3R WORK WHERE RIGHT OF WAY IS LIMITED, THE OFFSET CAN BE DECREASED AS DIRECTED BY THE ENGINEER.
 - B. DIRECTION OF THE REFLECTIVE TAPE ON THE EXTRUDER SHALL CONFORM TO MUTCD APPLICATION FOR DIAGONAL STRIPES ON OBJECT MARKERS AND BRIDGE END PANELS. COLOR OF TAPE SHALL BE AMBER (YELLOW).
 - C. DO NOT CHANGE THE LAPPING OF TERMINAL FOR ANY INSTALLATIONS; INSTALL AS TESTED.
 3. IF THE CALCULATED LENGTH OF NEED, CANNOT BE MET FOR THE SITES OF RETROFIT, MAINTENANCE OR UPGRADE OF TERMINALS, PROVIDE AS MUCH DISTANCE AS POSSIBLE TO THE HAZARD.
 4. THIS DRAWING IS REPRESENTATIONAL ONLY. DETAILS, DIMENSIONS, QUANTITIES, AND OTHER INFORMATION NOT SHOWN WILL VARY FOR EACH MANUFACTURER. SEE INDIVIDUAL MANUFACTURER'S PLANS FOR THIS INFORMATION.

ALTERNATE BREAKAWAY CABLE TERMINAL
 NO FLARE

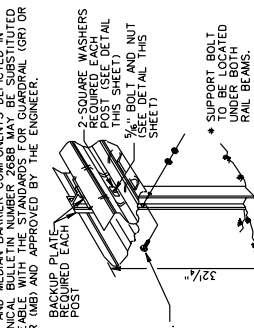
REV. 7/2004
 501.18

SPECIFICATION REFERENCE
 505

VIRGINIA DEPARTMENT OF TRANSPORTATION

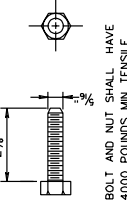
⑥ THE GUARDRAIL AND MEDIAN BARRIER COMPONENTS, DEPICTED IN A.P.T.B.A. TECHNICAL BULLETIN NUMBER 2688 MAY BE SUBSTITUTED IF INTERCHANGEABLE WITH THE STANDARDS FOR GUARDRAIL (GR) OR MEDIAN BARRIER (MB) AND APPROVED BY THE ENGINEER.

MB-5



TYPICAL INSTALLATION

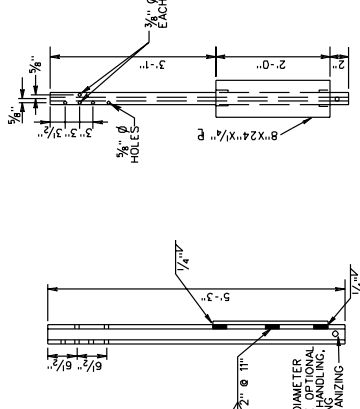
- NOTES:
- STANDARD MB-5 POST SPACING IS 12'-6"
 - STANDARD MB-5A POST SPACING IS 6'-3"
 - STANDARD MB-5B POST SPACING IS 3'-1/2"
 - STANDARD MB-5 DEFLECTION IS 8'-0"
 - ALL POSTS, BOLTS, NUTS AND WASHERS ARE TO BE GALVANIZED.
 - FOR DETAILS OF GUARDRAIL ELEMENT, HARDWARE, ETC. SEE SHEET NO. 501.D.
 - FOR DETAILS OF GUARDRAIL SPLICE JOINT, SEE STD. GR-8 DEPICTING AN NCHRP 350 TL-3 INSTALLATION.



SQUARE WASHER

- 2 SQUARE WASHERS
- 3/4" x 2 3/8" LONG HEX BOLT
- W-BEAM RAIL-UP PLATE
- W-BEAM BACK-UP PLATE
- S3 X 5.7 POST FLANGE
- ROUND WASHER
- 12 1/2% NUTS. NUTS TO BE INSTALLED FINGER TIGHT FROM EDGES OF PLATE WITH POST AND TIGHTENED WITH WRENCH (ONE NUT SHALL THEN SECURE WITH SECOND NUT.

GUARDRAIL POST CONNECTION DETAIL



FOR ROCK INSTALLATION, 8" X 26" X 1/4" PLATE IS TO BE ELIMINATED. DRILL OR EXCAVATE HOLE FOR POST, PLACE AND BACKFILL WITH CRUSHER RUN AGGREGATE TO LEVEL OF ROCK.

REV. 7/04

SPECIAL DESIGN SECTION
 DRAWING NO. 2390

PLAN NO. PROJECT FILE NO. SHEET NO.

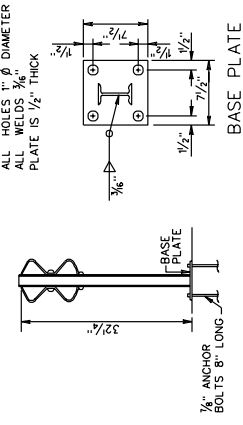
DESIGN FEATURES RELATING TO CONSTRUCTION OR TO REGULATION AND CONTROL OF TRAFFIC MAY BE SUBJECT TO CHANGE AS DEEMED NECESSARY BY THE DEPARTMENT

REVISED	STATE PROJECT	FEDERAL AID PROJECT	ROUTE	STATE PROJECT	SHEET NO.
	VA.				

SHEET 1 OF 2

STANDARD W BEAM MEDIAN BARRIER (WEAK POST SYSTEM)
 TL-3 (>45 MPH)

STRUCTURE MOUNTED BARRIER



S3X5.7 STEEL POST

SPECIFICATION REFERENCE
 505

REV. 7/03
 501.42

VIRGINIA DEPARTMENT OF TRANSPORTATION