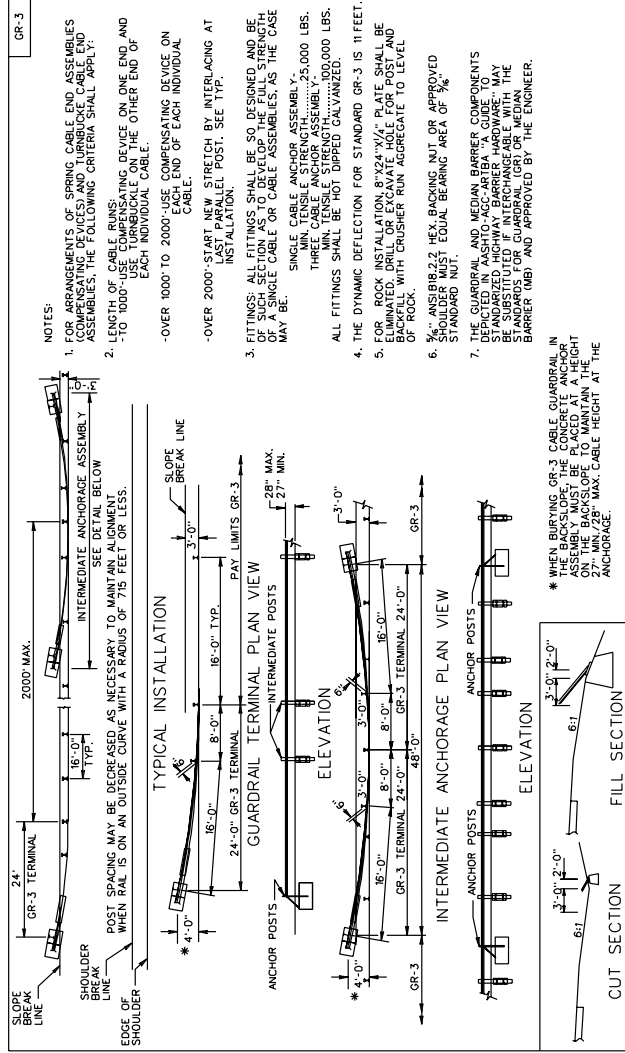


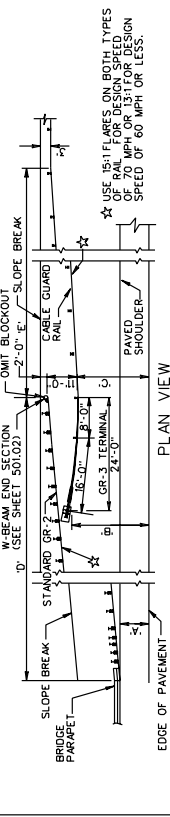
SURVEYED BY _____
 SUPERVISED BY _____
 DESIGNED BY _____

DESIGN FEATURES RELATING TO CONSTRUCTION OR TO REGULATION AND CONTROL OF TRAFFIC MAY BE SUBJECT TO CHANGE AS DEEMED NECESSARY BY THE DEPARTMENT

REVISED	STATE	FEDERAL AID PROJECT	ROUTE	STATE PROJECT	SHEET NO.
	VA.				



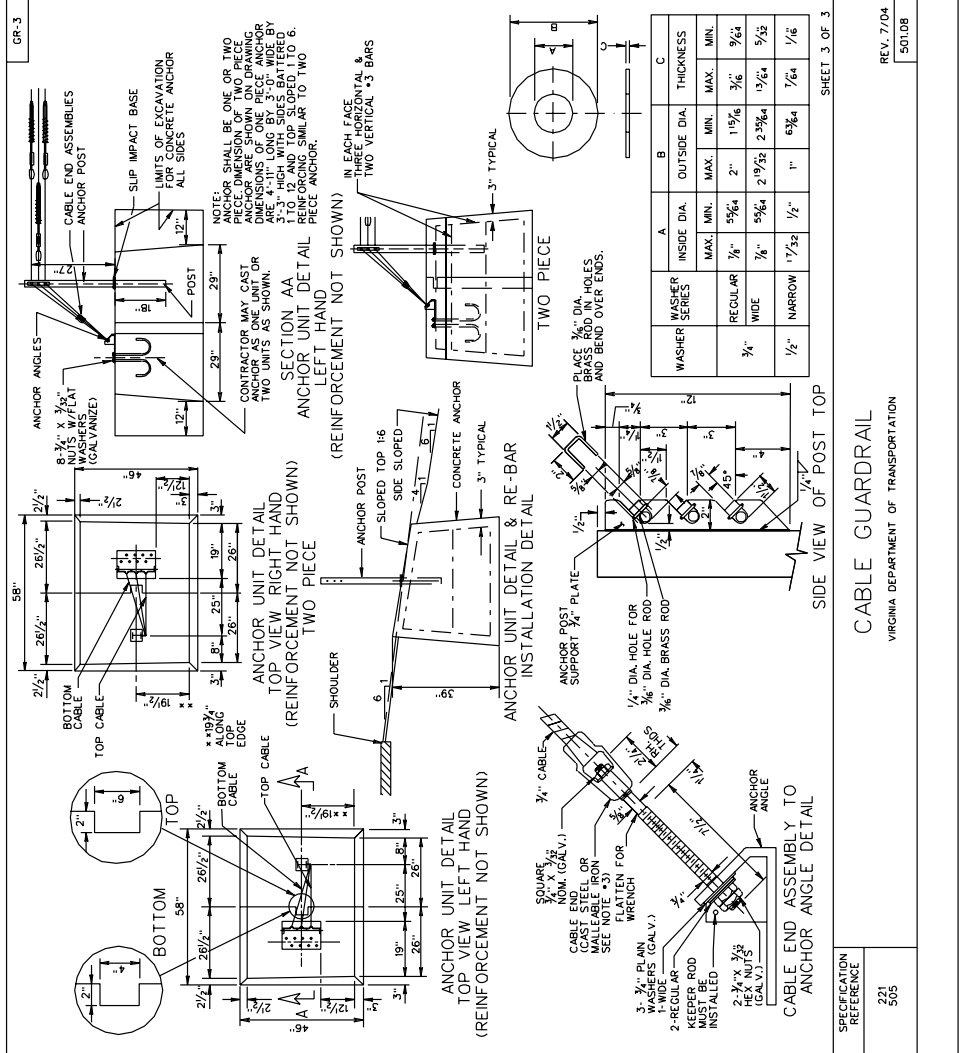
LT. OR RT. OF CURVE	A	B	C	D	E
RIGHT HAND	24'-12"	27'-26"	26'-37S/150'		
LEFT HAND	21'-12"	24'-23"	23'-33S/150'		
RIGHT HAND	21'-16"	24'-23"	23'-33S/150'		
LEFT HAND	21'-16"	24'-23"	23'-33S/150'		



METHOD OF TRANSITION FROM CABLE GUARDRAIL TO W-BEAM GUARDRAIL AT BRIDGE APPROACHES

SHEET 1 OF 3
 SPECIFICATION REFERENCE
 221
 505
 REV. 7/04
 501.06

CABLE GUARDRAIL
 VIRGINIA DEPARTMENT OF TRANSPORTATION



REV. 7/04
 SPECIAL DESIGN SECTION
 DRAWING NO. A-133

PLAN NO.	PROJECT	FILE NO.	SHEET NO.

CABLE GUARDRAIL
 VIRGINIA DEPARTMENT OF TRANSPORTATION

REV. 7/04
 501.08

SHEET 3 OF 3