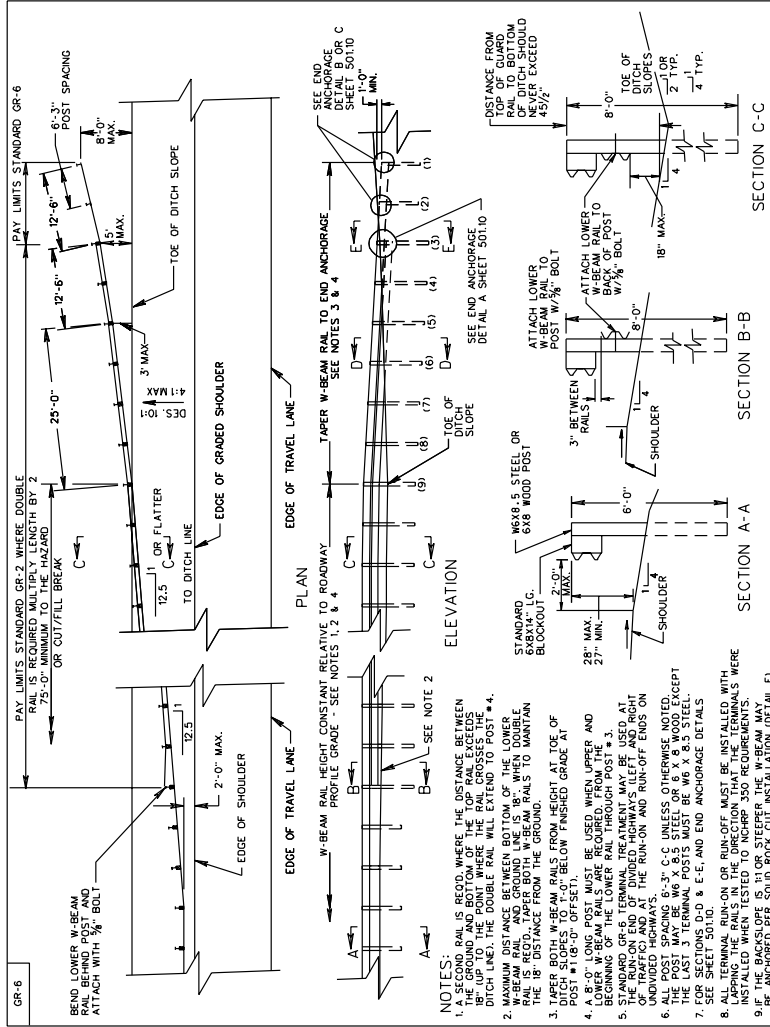


SURVEYED BY _____
 SUPERVISED BY _____
 DESIGNED BY _____



- NOTES:**
1. A SECOND RAIL IS REQ'D. WHERE THE DISTANCE BETWEEN THE GROUND AND BOTTOM OF THE TOP RAIL EXCEEDS THE DITCH LINE. THE DOUBLE RAIL WILL EXTEND TO POST # 4.
 2. MAXIMUM DISTANCE BETWEEN BOTTOM OF THE LOWER W-BEAM RAIL AND GROUND LINE IS 18" WHEN DOUBLE W-BEAM RAILS AND GROUND LINE IS 18" TO MAINTAIN THE 18" DISTANCE FROM THE GROUND.
 3. TAPER BOTH W-BEAM RAILS FROM HEIGHT AT TOE OF POST TO 2" OFF-SET.
 4. A 8'-0" LONG POST MUST BE USED WHEN UPPER AND LOWER W-BEAM RAILS ARE REQUIRED. FROM THE END OF THE POST TO THE TOE OF THE SHOULDER.
 5. STANDARD GR-6 TERMINAL TREATMENT MAY BE USED AT THE RUN-ON END OF DIVIDED HIGHWAYS (LEFT AND RIGHT UNDIVIDED HIGHWAYS).
 6. ALL POST SPACING 8'-3" C-C UNLESS OTHERWISE NOTED. ACCEPT THE POST TERMINAL POSTS MUST BE W-8 X 8 WOODEN POSTS.
 7. FOR SECTIONS D-D & E-E, AND END ANCHORAGE DETAILS SEE SHEET 501.0.
 8. ALL TERMINAL RUN-ON OR RUN-OFF MUST BE INSTALLED WITH THE PROPER SLOPE AND THE RAILS MUST BE INSTALLED WITH THE PROPER SLOPE IS 1:1 OR STEEPER THE W-BEAM MAY BE ANCHORED PER SOLID ROCK CUT INSTALLATION (DETAIL F).

SHEET 1 OF 2
 REV. 7/03
 501.09

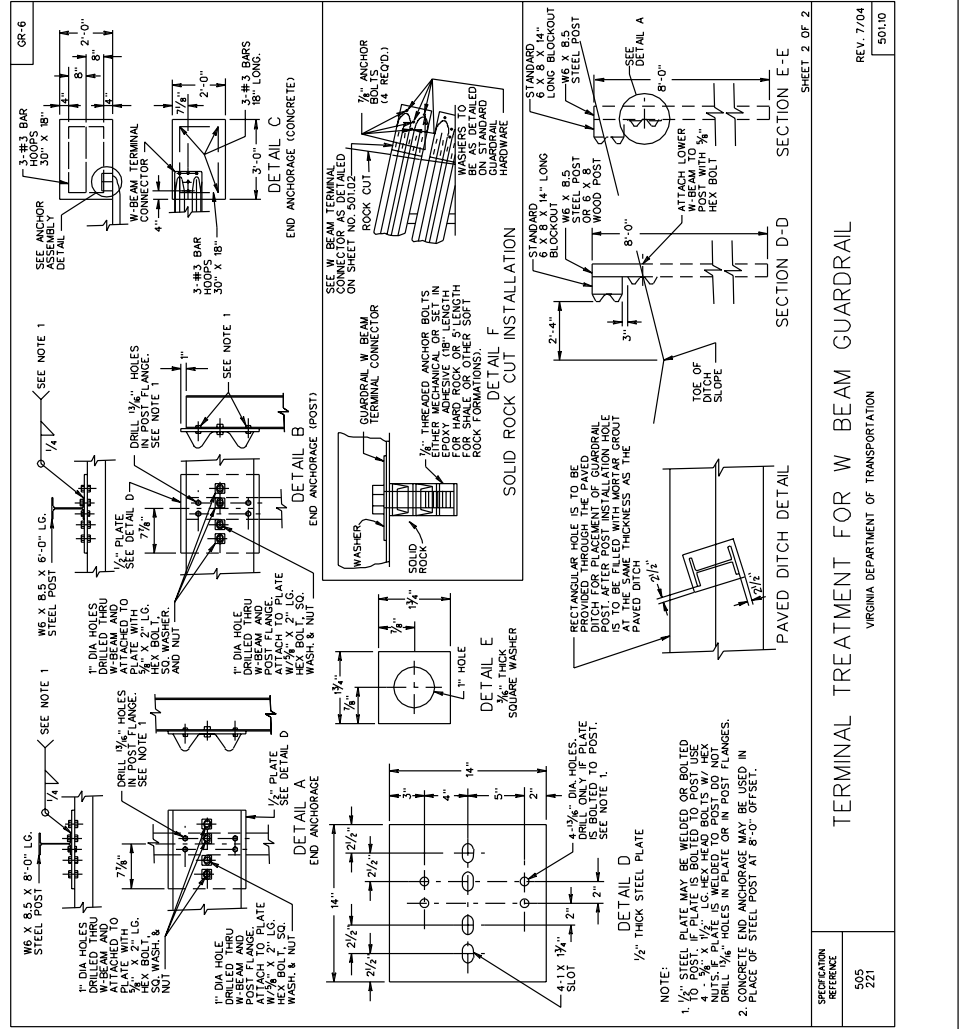
TERMINAL TREATMENT FOR W BEAM GUARDRAIL

VIRGINIA DEPARTMENT OF TRANSPORTATION

505
 221

DESIGN FEATURES RELATING TO CONSTRUCTION OR TO REGULATION AND CONTROL OF TRAFFIC MAY BE SUBJECT TO CHANGE AS DEEMED NECESSARY BY THE DEPARTMENT

REVISED	STATE	FEDERAL AID PROJECT	ROUTE	STATE PROJECT	SHEET NO.
	VA.				



- NOTE:**
1. 1/2" STEEL PLATE MAY BE WELDED OR BOLTED TO POST. IF PLATE IS BOLTED TO POST USE NUTS & WASHERS. IF PLATE IS WELDED TO POST DO NOT DRILL 1/2" HOLES IN PLATE OR IN POST FLANGES.
 2. CONCRETE END ANCHORAGE MAY BE USED IN PLACE OF STEEL POST AT 8'-0" OFFSET.

REV. 7/04
 SPECIAL DESIGN SECTION
 DRAWING NO. A-132

TERMINAL TREATMENT FOR W BEAM GUARDRAIL

VIRGINIA DEPARTMENT OF TRANSPORTATION

505
 221

PLAN NO.	PROJECT	FILE NO.	SHEET NO.