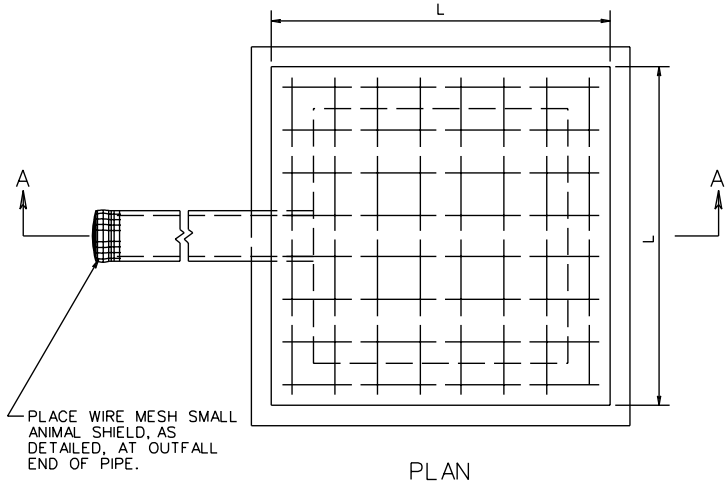
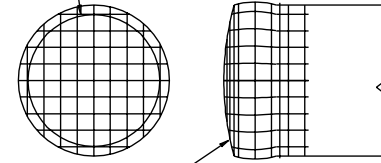


REVISED ON 3/03

SB-1



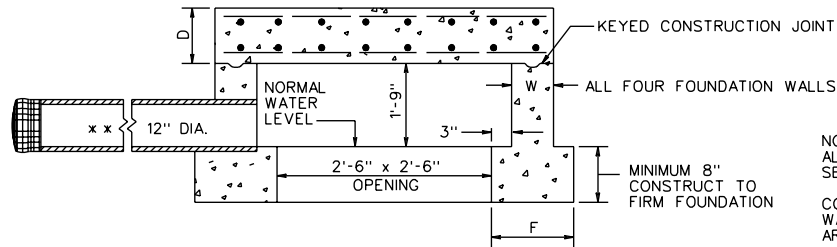
3/4" x 3/4" MESH,
HARDWARE CLOTH
MIN. 17 GAUGE,
GALVANIZED
AFTER WEAVING.



CRIMP AROUND OUTLET END OF
PIPE AND SECURE TO PIPE WITH
GALVANIZED STEEL WIRE

ANIMAL SHIELD DETAIL

PLACE WIRE MESH SMALL
ANIMAL SHIELD, AS
DETAILED, AT OUTFALL
END OF PIPE.



SECTION A-A

NOTES:
ALL CONCRETE TO BE CLASS A3 IF CAST IN PLACE. FOR PRECAST
SEE SHEET 110.02.

CONCRETE QUANTITIES SHOWN ARE BASED ON A 12" DUCTILE IRON
WATER LINE. IF OTHER SIZE OR TYPE OF PIPE IS USED QUANTITIES
ARE TO BE ADJUSTED ACCORDINGLY.

COST OF WIRE MESH SHIELD AT OUTFALL END OF PIPE IS TO BE
INCLUDED IN PRICE BID FOR PIPE.

THIS ITEM MAY BE PRECAST OR CAST IN PLACE.

** STANDARD RECOMMENDED PIPE IS 12" DUCTILE IRON WATER LINE,
PUSH ON JOINTS-CLASS TO BE SPECIFIED BASED UPON HEIGHT
OF COVER.

HEIGHT OF FILL	SIZE (L)	TOP SLAB (D)	SIDEWALLS (W)	FOOTING WIDTH (F)	REINFORCING STEEL			QUANTITIES			
					NO. REQ'D.	LENGTH	SIZE	SPACING C-C	CU. YDS. CONC.	REINF. STEEL LBS.	INCREMENT * CU. YDS.
BELOW 25'	4'	8"	6"	12"	32	3'-9"	#4	6"	1,189	80	0.043
25' - 50'	4'-4"	8"	8"	14"	32	4'-1"	#5	6"	1,512	136	0.053

* QUANTITIES SHOWN ARE BASED ON A 8" DEPTH OF FOOTING, ADD
INCREMENTAL QUANTITY FOR EACH ADDITIONAL 1" OF DEPTH.

STANDARD SPRING BOX

VIRGINIA DEPARTMENT OF TRANSPORTATION

REV. 7/01
110.01

SPECIFICATION
REFERENCE

105
232
302