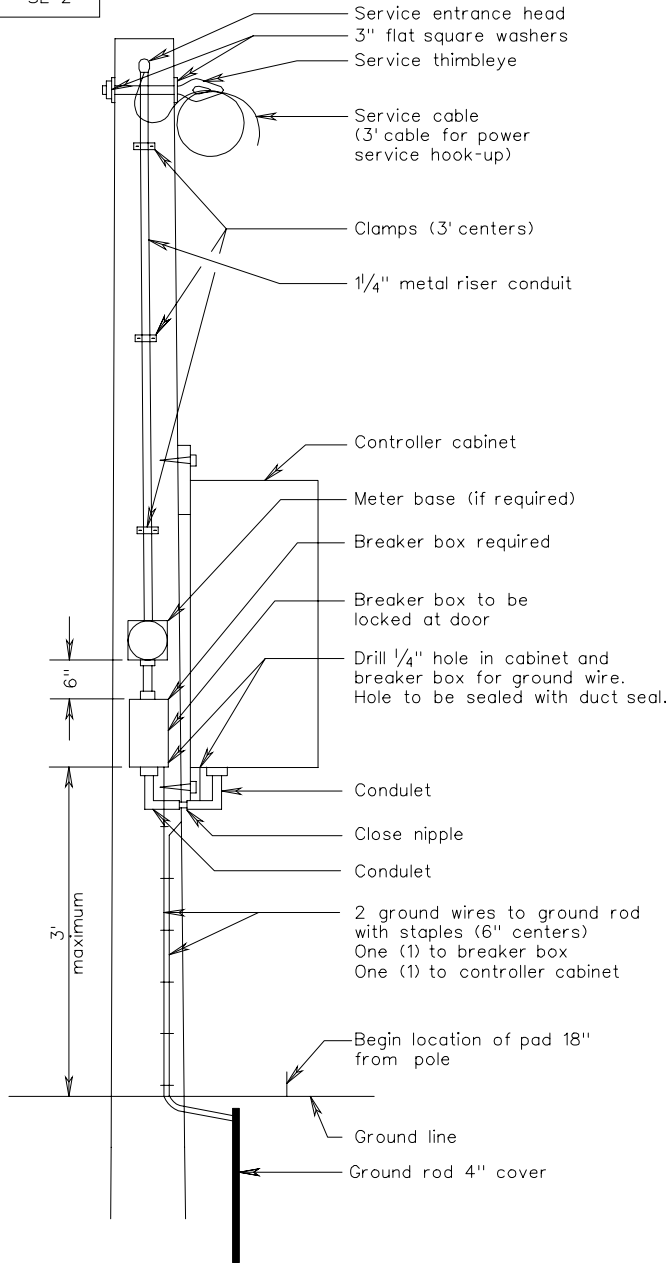


SE-2



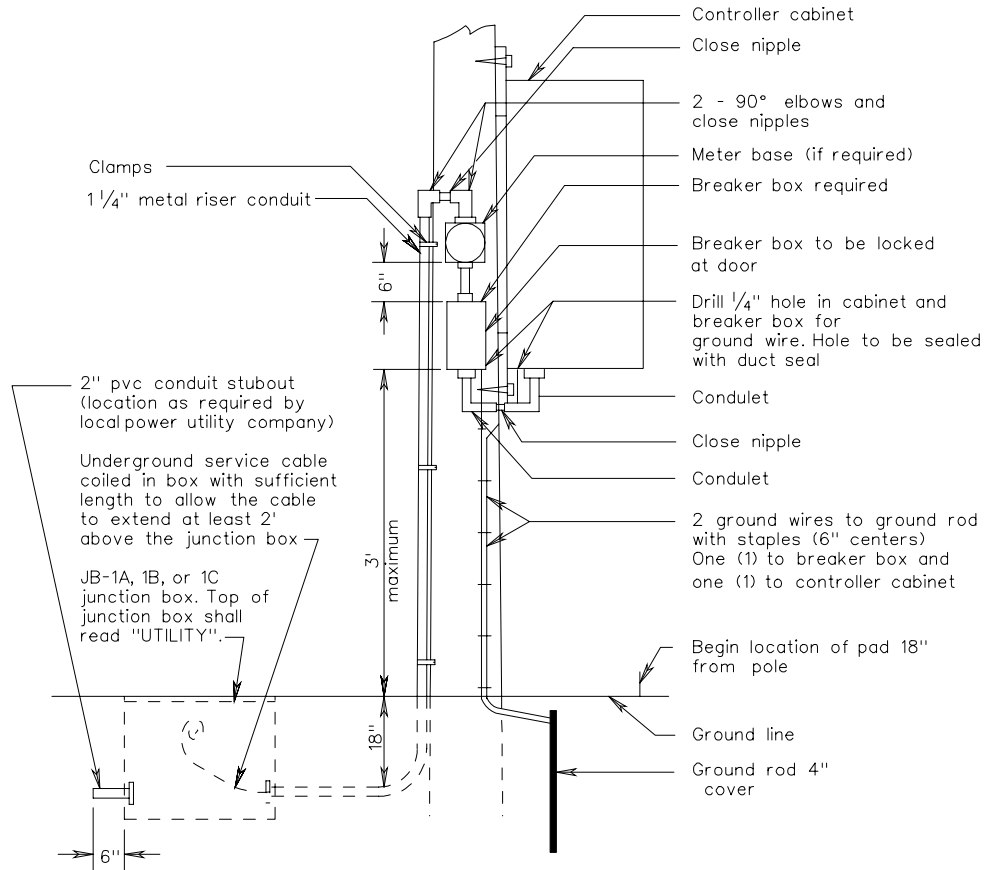
TYPE A

Notes:

No other conductors shall be run in the same conduit with electrical service cable.

Concrete pad required when cabinet mounted on pole in earth areas. (See standard CTE-1 for pad detail).

For underground service installations, local power utility company will install service power utility cable from their power source to the junction box and make required splices to the service cable coiled in the junction box.



TYPE B

ELECTRICAL SERVICE DETAILS
 SIGNAL INSTALLATION