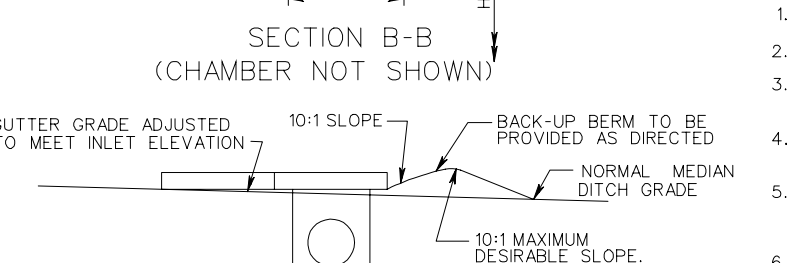
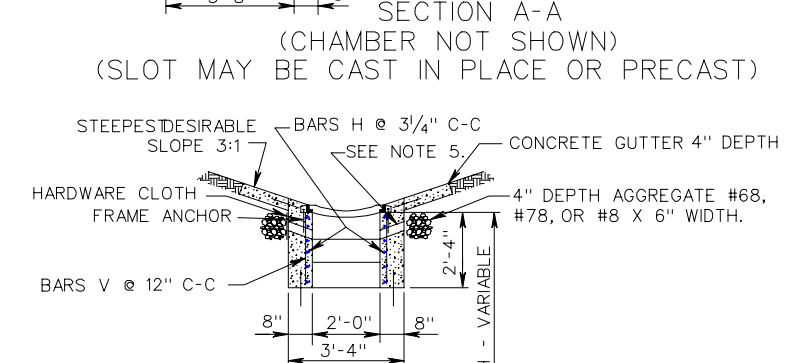
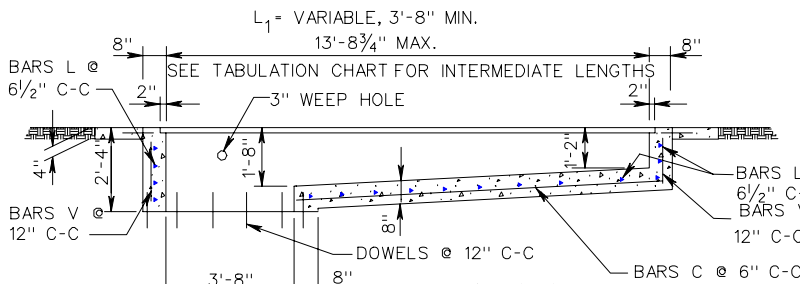
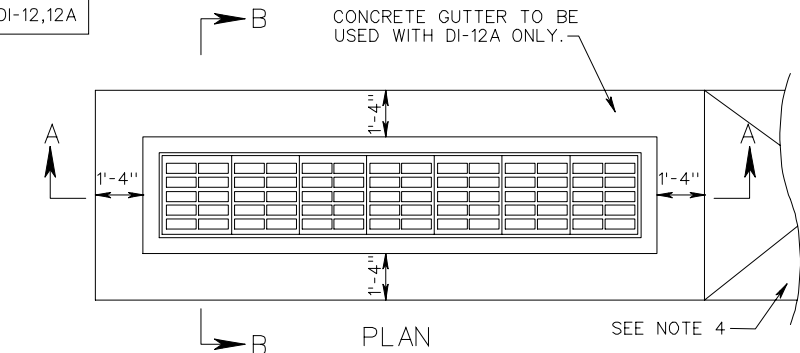
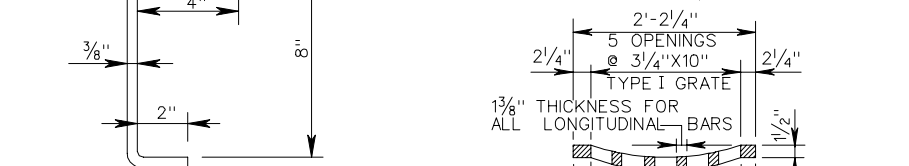
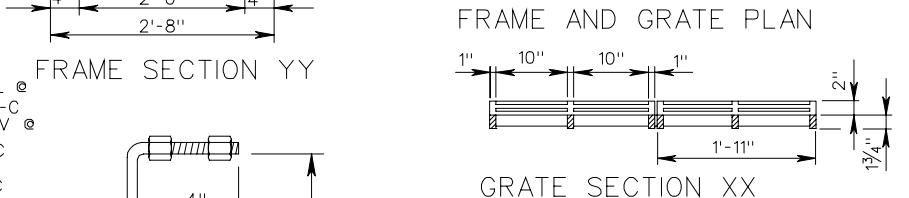
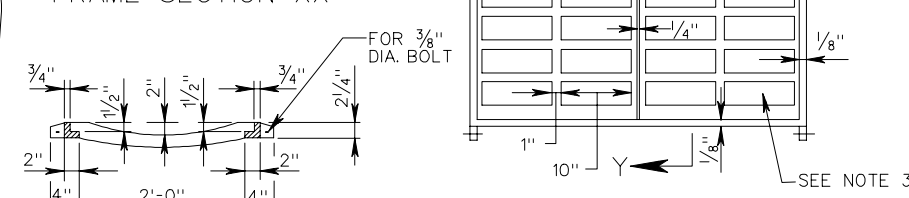
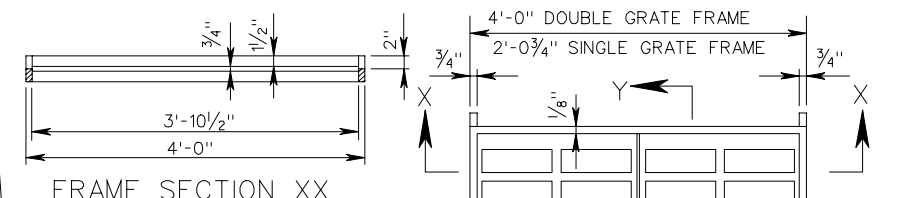


DI-12,12A



LONGITUDINAL SECTION
(WHEN INLET IS LOCATED ABOVE NORMAL DITCH GRADE)



FRAME ANCHOR
3/8" DIAMETER
BENT BAR

NOTES

1. TYPE I GRATE: LIMITED ACCESS AND RURAL UNLIMITED ACCESS; PEDESTRIAN ACCESS UNLIKELY
2. TYPE II GRATE: URBAN AREAS; PEDESTRIAN ACCESSIBLE AREAS.
3. SEE GRATE SECTION YY FOR SIZE AND NUMBER OF GRATE OPENING REQUIRED FOR TYPE I AND TYPE II GRATE.
4. PAVED TRANSITION WHERE REQUIRED ON PLANS IS TO BE SHAPED TO CONFORM TO ROUNDED CONCRETE GUTTER OF DI-12A.
5. 3" DIAMETER WEEP HOLE WITH 12" X 12" PLASTIC HARDWARE CLOTH 1/4" MESH OR GALVANIZED STEEL WIRE, MINIMUM WIRE DIAMETER 0.03", NUMBER 4 MESH HARDWARE CLOTH ANCHORED FIRMLY TO OUTSIDE OF STRUCTURE.
6. IF NORMAL DITCH GRADE IS TOO FLAT TO ALLOW FOR ADJUSTED GRADE TO INLET, A SPECIAL GUTTER DETAIL WILL BE REQUIRED ON PLANS.
7. GRATE BARS TO BE PARALLEL TO DITCH FLOW.

SHEET 2 OF 3

MULTIGRATE DROP INLET
FOR PIPE SIZES 12" TO 72"
VIRGINIA DEPARTMENT OF TRANSPORTATION

SPECIFICATION REFERENCE
233
302